

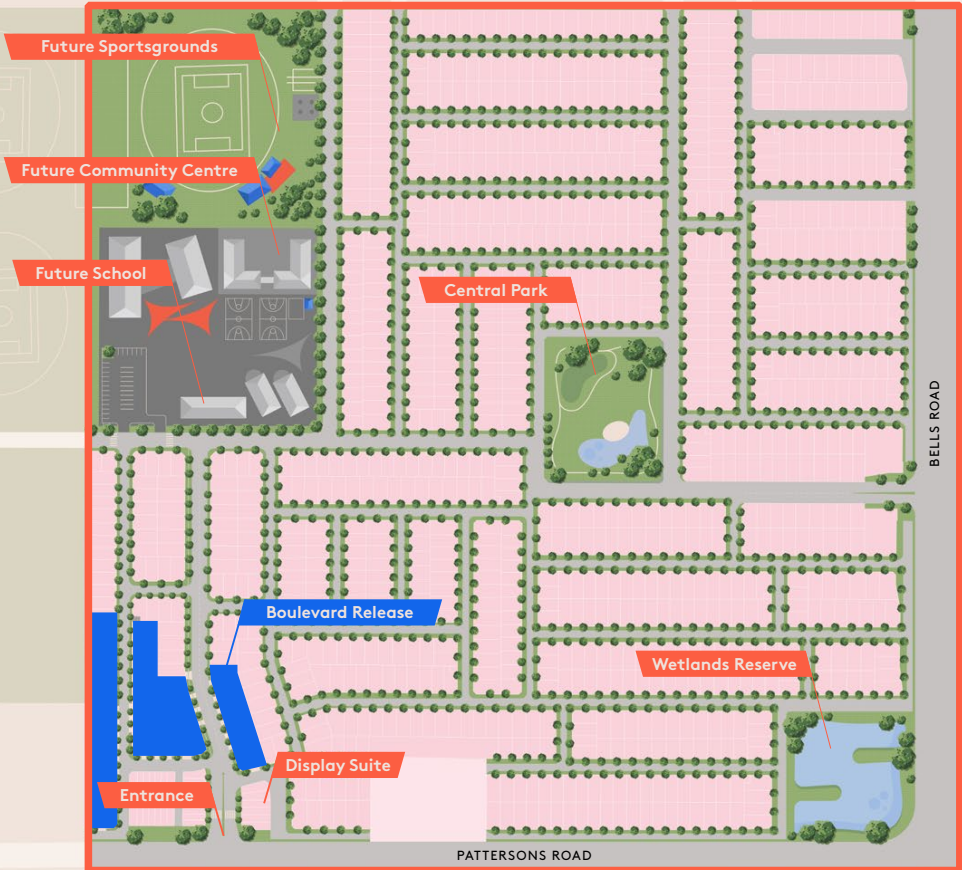
VERVE

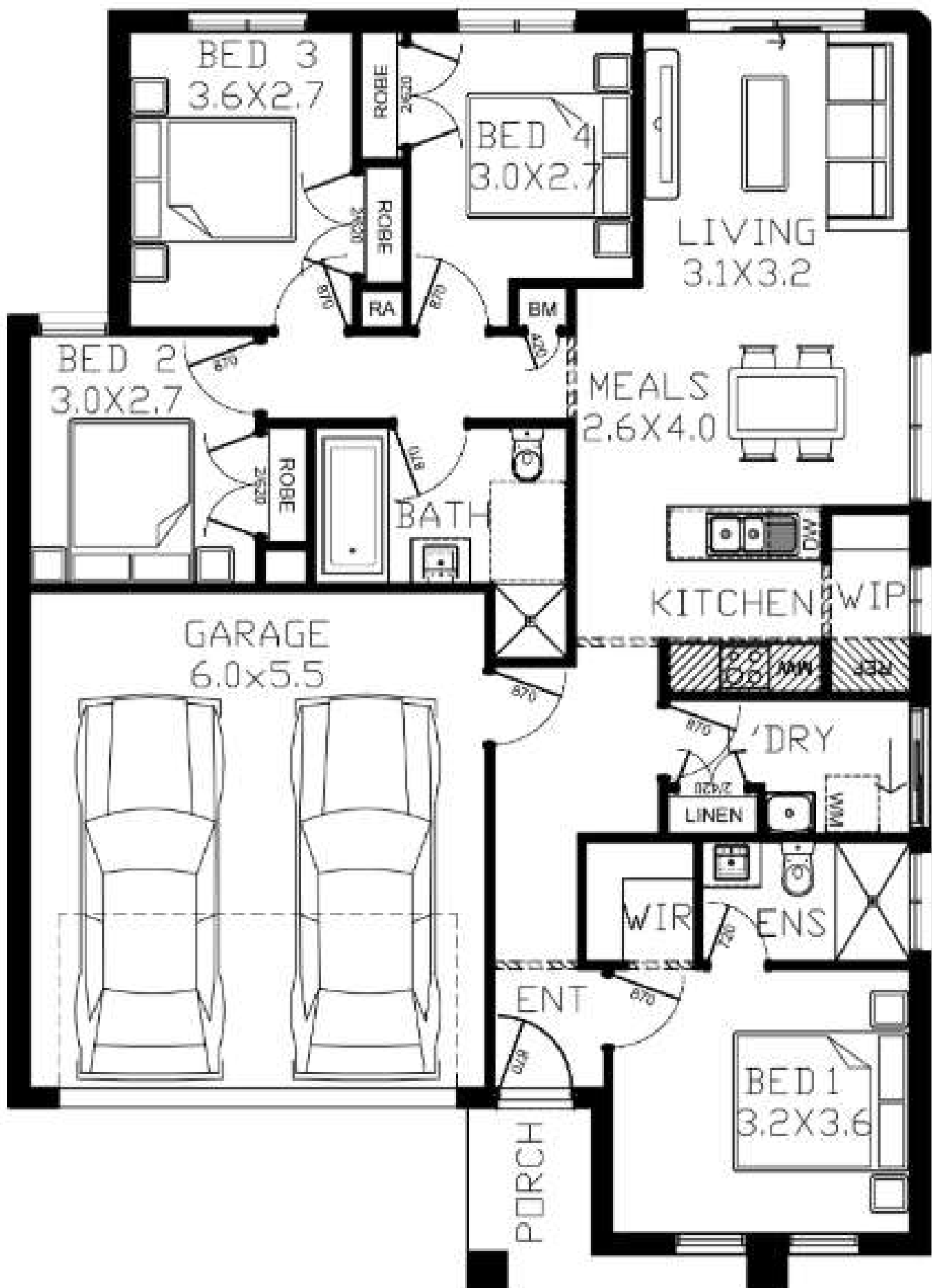
STAGE 1A
THE BOULEVARD RELEASE



Goldfields

Verve's landscaped boulevards and quiet neighbourhood streets provide beauty and solace at home.







Photos

11

Floorplan

1

Property Package

Lot 360 Tribute Avenue Clyde North VIC 3978

Project: Verve / 3

4 1 2 2

Price: From \$717,999

Available

Details

Property Type	House	Pricing	Fixed Price - Full Turn Key
Elevation	Single Storey	Lot Size	290.0 m ²
Total Floor Area	154.0 m ²	Land Price	\$372,000
Design	TYLER 12.517	Land Reg. Date	Titled
Facade	PLUME DG		
Contract Type	2-part Contract		

Est. Weekly Rental

N/A

Est. Gross Yield

N/A

Enquire Now

Share a link

Print a brochure..

Generate a property pack..

Verve / 3

Live with Verve, where everything you need meets all the things you love.

A modern and meticulously designed neighbourhood in the heart of Clyde North, Verve is alive with vitality. On these tree-lined boulevards and landscaped streets, life is dynamic, and the sense of community is strong.

Verve is a place that strikes a perfect balance. One that is highly sought after yet rarely found, where you're close to everything you need, but retreat to tranquillity whenever you want. That's very Verve.

Very inspiring.

Here, stylish boulevards, tree-lined streets, striking public art and modern amenity all come together to create a vibrant new neighbourhood. The natural point is Central Park, an inspiring place to wonder and wander, to connect and create.

Very welcoming.

Enjoy a Clyde North location surrounded by the best of modern living. Verve is close to established schools, great shopping, wonderful community am parks, sportsgrounds and more.

<https://verveclydenorth.com.au/>

Inclusions

- Reverse Cycle Split System to Living

Alarm System

Downlights throughout

Floor Coverings as per specification
- Fly Screens and fly doors

Window furnishings

Dishwasher

Clothesline & Letterbox
- Fencing & Driveway

Fully landscaped front