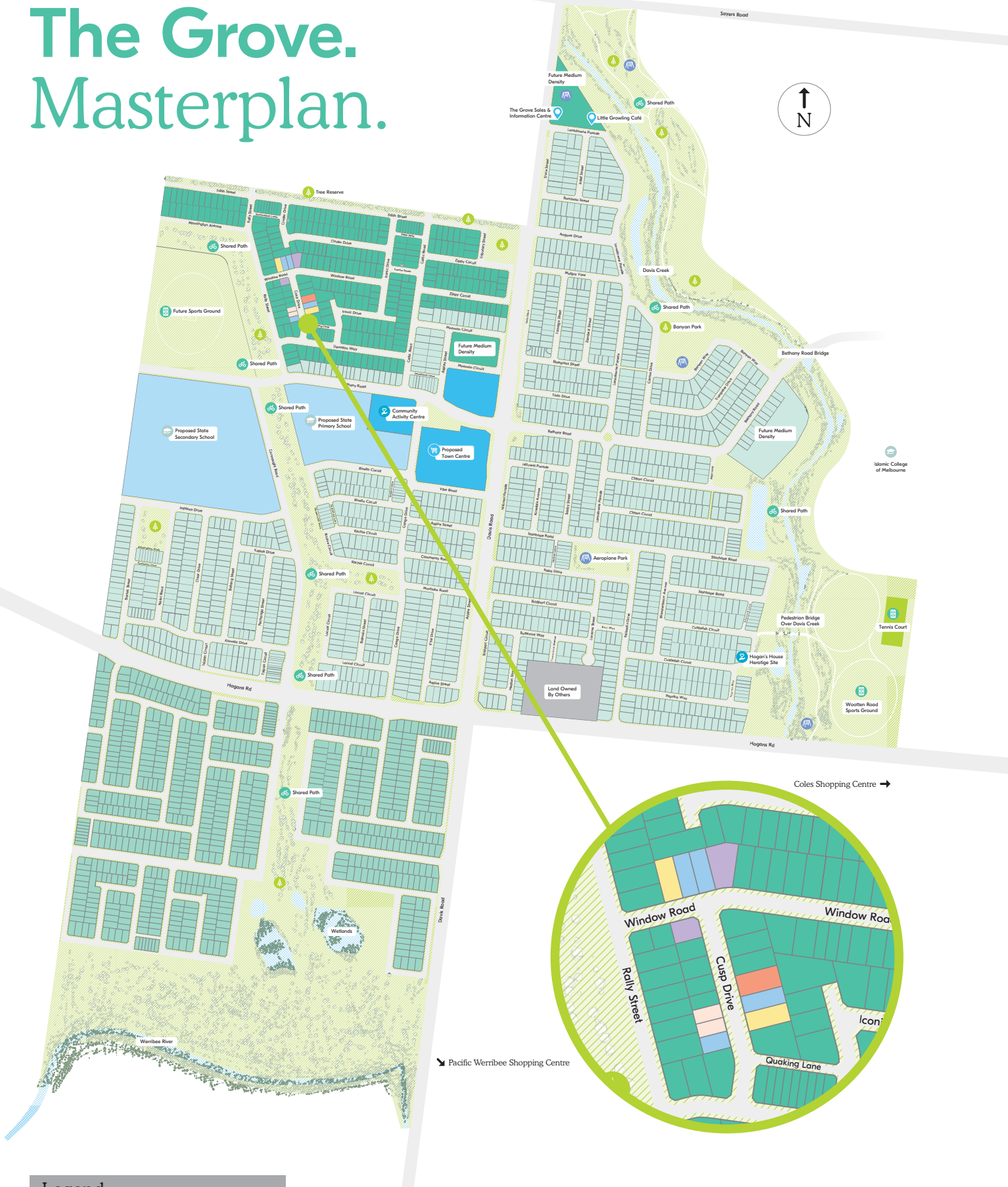


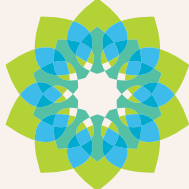
The Grove. Masterplan.



- Town and community centre
- Existing Residential
- For Sale or Coming Soon
- Future Residential
- Schools
- Non Residential

This plan is an artist impression, is not to scale and should be used as a guide only.

Live proud.



THE GROVE



The Grove. By the river.

We are all drawn to the water. It makes us happy.

Just one look lifts our spirits. Its sound calms our senses. While its broad appeal brings us together, time and again. And that's just how it will be living at The Grove.

This community is unlike any other in Melbourne's west. The naturally stunning landscape enhances its unique appeal, bordered by two waterways, with a future wetlands in-between.

However, The Grove is much more than a picturesque setting, it is also a complete lifestyle, where your family can have everything you want, conveniently close to home.

With distinct neighbourhoods, a range of lots for all budgets, and an already well-established community. Discover life by the river soon.



Where you want to be.

- Bordered by Davis Creek and the Werribee River.
- Only 31km from Melbourne's CBD.
- 31 minutes by train from Tarneit Station to Southern Cross Station.
- Already a vibrant community.
- With plans for even more amenities.
- As well as easy access to an abundance of amenity in the surrounding area including shops, schools and services.



THE GROVE

This plan is an illustration for decorative purposes only. It is not to scale and should not be used as a guide.

The Grove Masterplan



At a glance.

This idyllic 167 hectare community will be home to more than 2,600 families, with many already living here. Just one glance and it's easy to see why.

Natural surrounds

- Davis Creek on one side.
- Werrabee River on the other.
- Future wetlands in-between.

Public transport and access

- Only 31km from Melbourne's CBD.
- 5.8km to Tarneit Train Station (Geelong line).
- Or take Bus Route 442 to Hoppers Crossing Train Station (Werrabee Line).

Shops, restaurants, cinema

- Little Growing Café at The Grove is a favourite with locals.
- Proposed Town Centre for The Grove.
- Proposed Community Activity Centre.
- Just moments from Tarneit West Village, Tarneit Gardens Shopping Centre and Tarneit Central.
- Short drive by car or bus to Pacific Werrabee Shopping Centre with Myer, cafés, restaurants and a Village Cinema.

Themed playgrounds

- Tree house inspired Banyan Park.
- Aeroplane Park couldn't be more fun.
- Even Growing Grass Frog Park at the Sales Centre is a big hit with families and a popular spot for kids' birthday parties.

Leisurely parklands

- Proposed hike and bike paths along Davis Creek.
- Planned sporting oval.
- BBQ area.
- Adjoining Wootton Road sporting fields and facilities.

Childcare and schools

- Childcare centres and kindergartens are already open locally.
- Proposed primary and secondary schools at The Grove.
- With nearby schools including:
 - Westbourne Grammar,
 - Good News Lutheran,
 - Islamic College of Melbourne,
 - Bethany Catholic Primary School.

The Grove Sales and Information Centre

- Open everyday from 10am to 5pm.

The Grove Display Village

- 17 house designs.
- 10 leading builders.
- Be sure to visit.

This plan is an illustration for decorative purposes only. It is not to scale and should not be used as a guide. Subject to change and planning approval.



“The Grove is wonderful.
The neighbourhood is
lovely. I feel at home,
finally.”

— Rashi, Resident.

Yours to find by the river.



Abundance ...

In Melbourne's popular west is this picture-perfect, natural setting. Add the proposed town and community centres, shops, schools, parks, sports grounds, with all the amenity in neighbouring areas, and here is an abundant life for every family.

Easy access ...

From The Grove, drive to Tarneit Train Station which is on the Geelong line. Once there it's just 31 minutes by train to the CBD. Or catch a bus to Hoppers Crossing Train Station and take the train to Geelong.

The best start ...

Both primary and secondary schools are proposed for The Grove. These will join the already established and highly regarded childcare centres, kindergartens and private schools that are nearby.

Good friends ...

Already those who reside at The Grove, love it and you will too. Build a home and then a life among people, like you, who want the best for their families.

Well-being ...

At The Grove a healthy lifestyle just happens. There are many proposed parklands, existing themed playgrounds, even a future oval. Join our many free fitness classes as part of Live Life Get Active. Or use the sporting facilities at neighbouring Wootton Reserve. With so much on offer, you will want to be out and about every chance you get.

A leisurely pace ...

At The Grove you will be only minutes by foot from the proposed town centre, community centre, schools, sporting ovals, train station and bus stop. All easily accessed via gently winding hike and bike paths.

The perfect plan ...

The Grove Display Village offers 17 stunning designs, by 10 leading builders to suit a range of block sizes, budgets, lifestyles and house plans. Design your ideal dream home. Then build a life for you and your family.

Lasting happiness ...

While your needs may change over the years, you can always call The Grove home. With a choice of neighbourhoods, there is something for every life stage. So if you decide to upsize or downsize down the track, live closer to the action of immerse yourself in nature, you'll always be able to have whatever makes you happy.

Get together ...

Like everything else at The Grove, The Little Growling Café is welcoming. Chat over coffee while the kids play. It will give you a feel for what makes living at The Grove so special.



Your new home by the river.

From a choice of neighbourhoods, builders and the latest designs for blocks of all sizes and budgets, whatever your ideal lifestyle, you'll find it here at The Grove.

Decide on your builder

The Grove Display Village is inspiring. Inside you can see the work of not one, two, or a few, but as many as 11 leading Victorian builders. All of who are showcasing their contemporary designs, complete with stylish fittings and fixtures.

Select your lot



Retreat (12.5m+ frontage)

Perfect for couples who love to play host. Or perhaps you have young children and it's just easier to entertain at home. The back garden is the ideal size for youngsters. There is also the potential for a fourth bedroom or a double garage.



Escape (14m+ frontage)

A great choice for the growing family. Here you can have an additional living space for a rumpus room or home theatre. This extra room will be welcomed, especially if you have kids and even more so when they are teens.



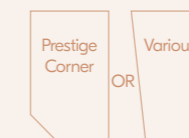
Classic (16m+ frontage)

Accommodates many different house designs. With this lot size you can also have a big backyard space for alfresco dining.



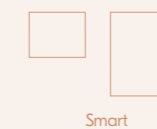
Grand (18m+ frontage)

The majority of single and double storey home designs, offered by most builders, can sit comfortably on this block size.



Prestige Corner or Various

Of different sizes and shapes, these lots allow you to get extra creative with your house design.



Smart

These smaller lots sizes are house and land packages with some of Melbourne's best builders. They are affordable and also easier to maintain, for everyone from professionals with busy lifestyles to empty nesters wanting to downsize.



Your future by the river.

The Grove is designed to be kind to the environment with a world-renowned 5 Star Green Star Community Rating. What this means is leading design excellence, developed to Australia's highest environmental and liveability standards to not only help preserve the natural beauty of The Grove, but our earth and its precious resources. By adhering to the most sustainable practices at every stage of the development and forever after, you can help secure the future for tomorrow's generations.

A message from Frasers Property Australia.

At Frasers Property, there's one measure above all that tells us we've succeeded. We never ask to see it, but we observe it often: it's the smile of pride in what you've achieved.

It's seen in the nod of a neighbour, the togetherness of friends, or the laughter of children at play. Small moments that become the measure of how well you've planned and saved and worked to make it all happen.

We've been creating memorable places for Australians to feel proud of since 1924. These include Life, Point Cook, Mambourin and now The Grove.

Global in scale, we remain local at heart. After almost a century of creating homes and places for tens of thousands of Australians, experience tells us that what matters the most is the simple joy of living in a place you're proud to call home.

Live proud.



Community
Built on a foundation of connectivity, health and well-being



Longevity
More than 90 years of history in Australia



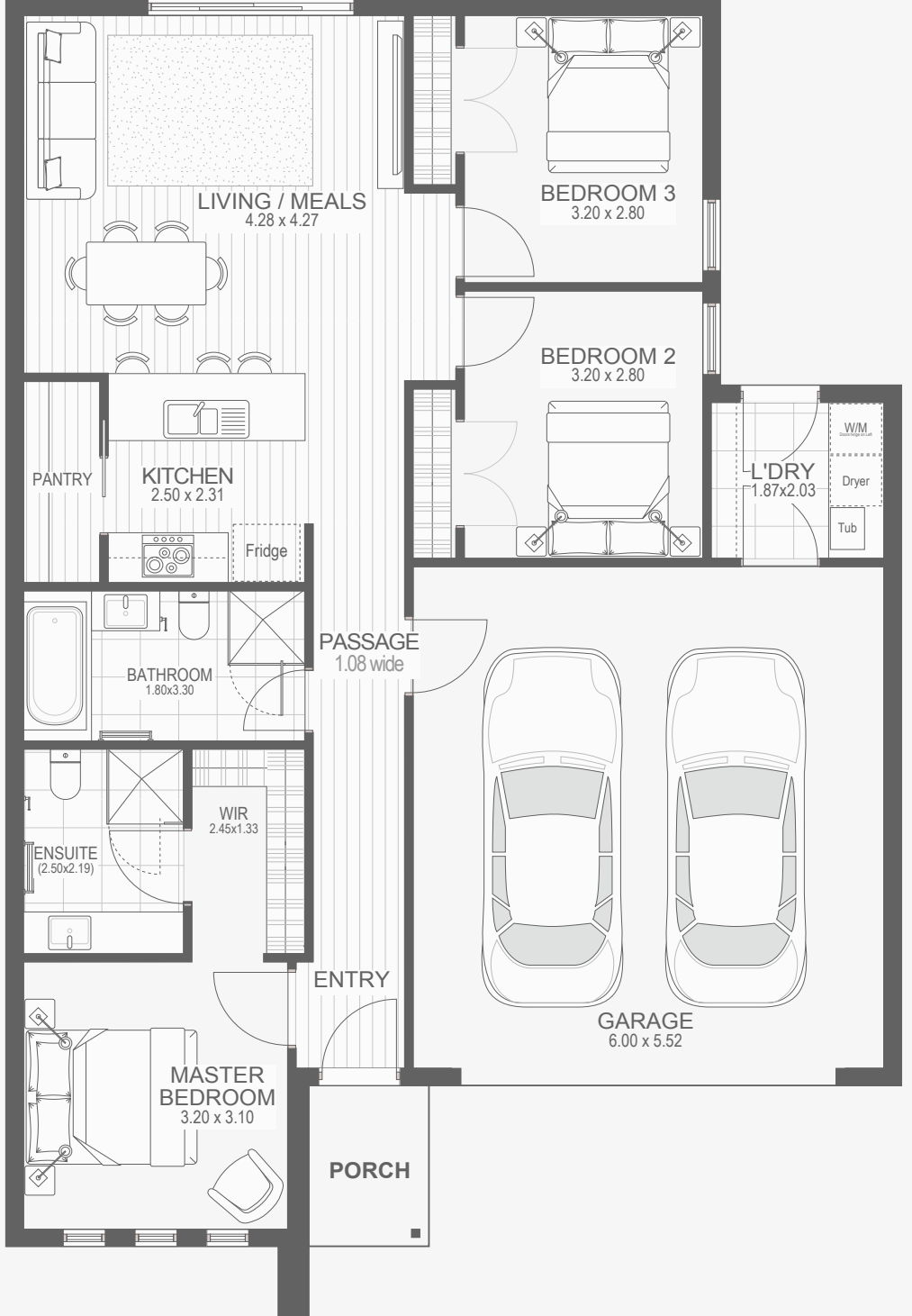
Prosperity
Personalised customer care and rewards



Quality
Award winning sustainable home design for a lifetime of living



Reliability
Property services and utilities you can rely on



LIVING / MEALS
4.28 x 4.27

BEDROOM 3
3.20 x 2.80

BEDROOM 2
3.20 x 2.80

PANTRY

KITCHEN
2.50 x 2.31

Fridge

L'DRY
1.87 x 2.03

W/M

Dryer

Tub

BATHROOM
1.80 x 3.30

PASSAGE
1.08 wide

ENSUITE
(2.50 x 2.19)

WIR
2.45 x 1.33

ENTRY

GARAGE
6.00 x 5.52

MASTER
BEDROOM
3.20 x 3.10

PORCH