



THE ENCLAVE

WYNDHAM VALE



- Peaceful surrounds with city conveniences.
- Various lot sizes to suit your budget and lifestyle.
- Future link to planned Council sports and recreation facilities.



The Enclave at Wyndham Vale



Located in Melbourne's thriving west, The Enclave is Wyndham Vale's newest estate. Carefully designed for the liveability your family deserves, with over 200 allotments, tranquil tree lined streets, park and future link to planned Council sports and recreation facilities. Peaceful surrounds, with city conveniences. Secluded, yet only minutes away from everything you need. The Enclave provides the ability to live the lifestyle you've always meant to live. Get to know your neighbours and make friends, explore the surrounding areas and invite someone for a barbeque or have a picnic with family and friends in the extensively landscaped park.



Room to move...

THE ENCLAVE OFFERS AFFORDABLE HOUSE, LAND, AND LIFESTYLE CHOICES



Living at The Enclave you can raise a family, be part of a close-knit community, all whilst staying connected to the city. Walking distance to the new Wyndham Vale Regional Rail Link and extensive bus network, plus easy access to the Melbourne CBD via the Princes Freeway.

Room to grow...

Quality land, high amenities and affordable prices – in a fast-growing area with easy access to already established facilities including shopping centres, major supermarkets, schools, childcare, community centre, library, cinemas, sports and recreational facilities. There are endless opportunities for families to live, laugh, learn and play.

Perfectly located for a balanced lifestyle.

The Enclave offers a range of small, regular and large lot sizes providing you with the opportunity to build your new home suited to your individual style and budget. Allotments are now selling and our friendly sales team are ready to help select and secure yours today. House & Land packages available from leading quality builders or you can choose your own home design & builder. Whichever you choose, you can be sure your new home at The Enclave will be a sound investment for you and your family into the future.

Your possibilities are endless.





MEDICAL FACILITIES



RESTAURANTS

CBD



30 MINUTES BY TRAIN



35 MINUTES BY CAR



SCHOOLS



CAFES

GEELONG



37 MINUTES BY TRAIN



40 MINUTES BY CAR



SHOPS



PARKS

ACCESS

PRINCES FREEWAY AND MAJOR ROADS CLOSE BY



THE ENCLAVE

WYNDHAM VALE



BAYCROWN
PROPERTY GROUP

For enquiries



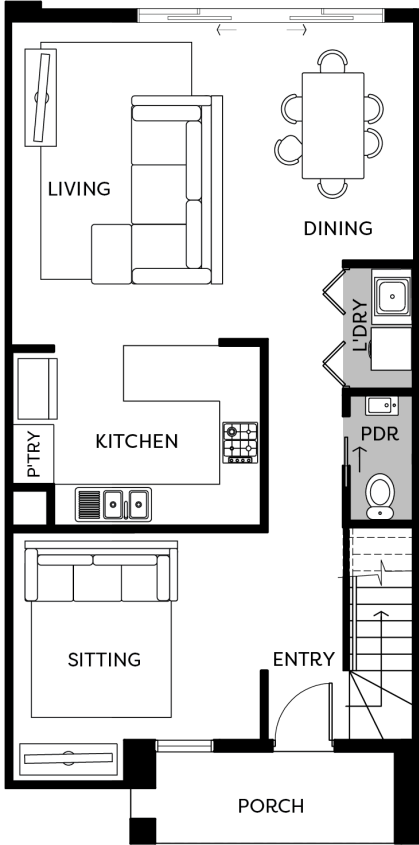
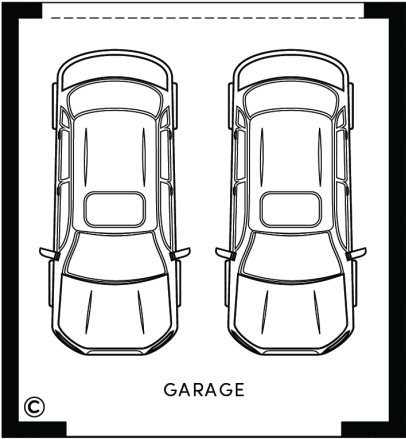
1300 389 490



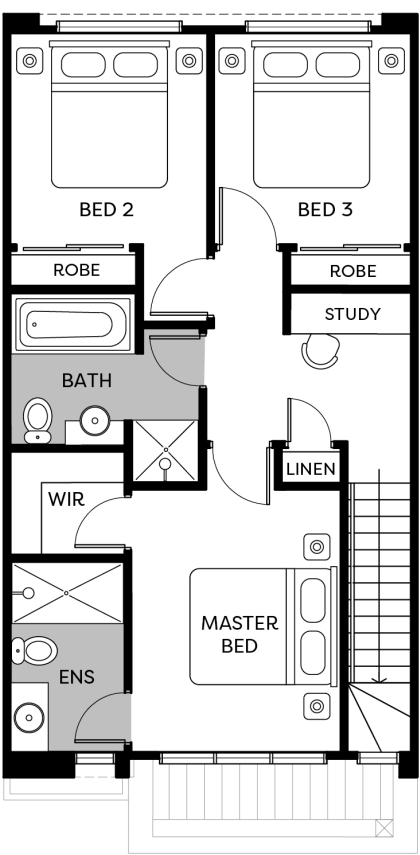
sales@theenclavewyndhamvale.com.au



Disclaimer. Information contained herein is subject to change without notice. No responsibility is accepted by the vendor or the agent for any action taken in reliance thereon. Prospective purchasers should make their own enquiries to satisfy themselves on all aspects. Details herein do not constitute any representation by the vendor or the agent and are expressly excluded from any contract. Photographs depict lifestyles only.



GROUND FLOOR



FIRST FLOOR