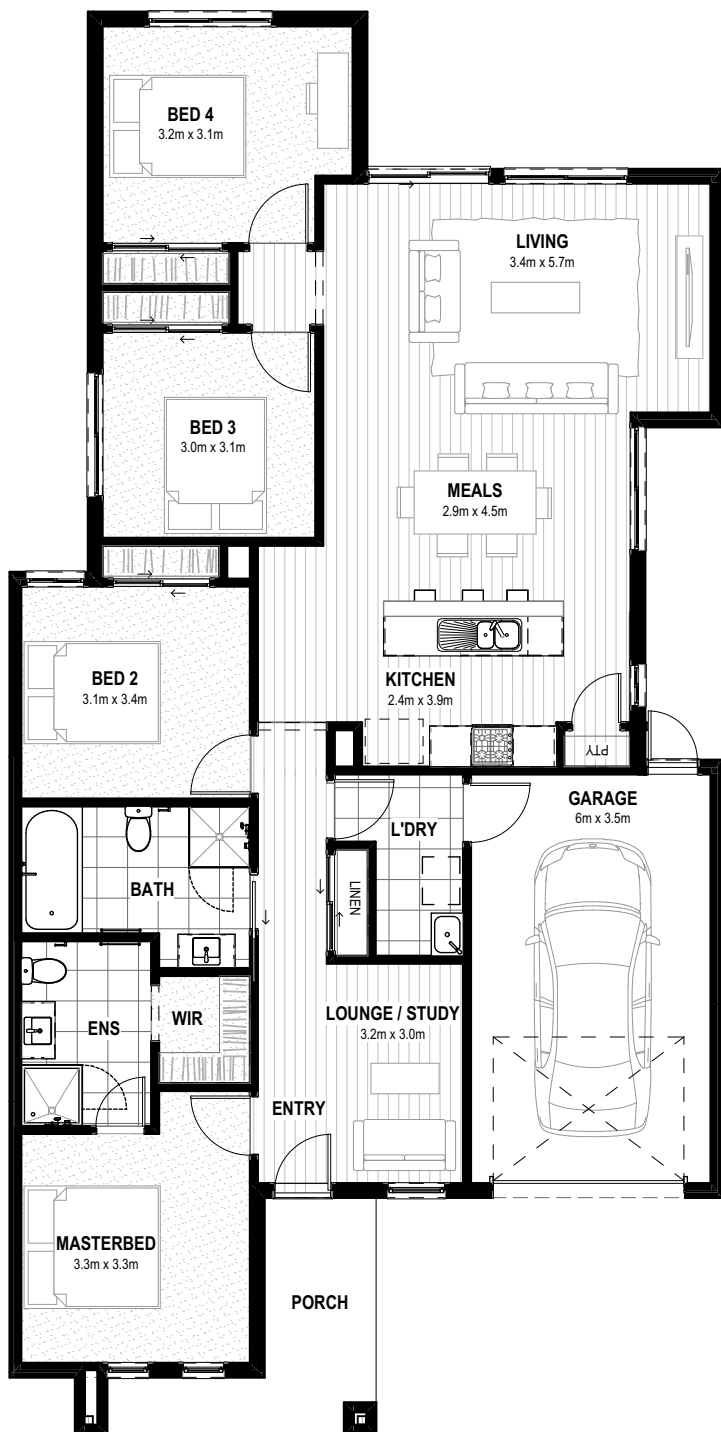




349-351 CENTRE ROAD

357-359 CENTRE ROAD

LOCAL PARK
0.75ha
(ID: LP-02)





Lot 1 Mirage Estate Berwick

Facade: Beaumaris - Silk

Floorplan: Yanin 187

House size: 18.6sq House Price: \$351,400

Land Size: 265 SQM Land Price: \$463,750

TURNKEY NO MORE TO PAY!

- Fixed Site Costs included
- Heating & Cooling included
- Stone tops to all wet areas
- Driveways & paths included
- Landscaping & Fencing included
- Window furnishing included
- 12 month RACV Home Assist
- 12 month Landlord insurance

TOTAL HOUSE & LAND PRICE

\$815,150

B 4

