

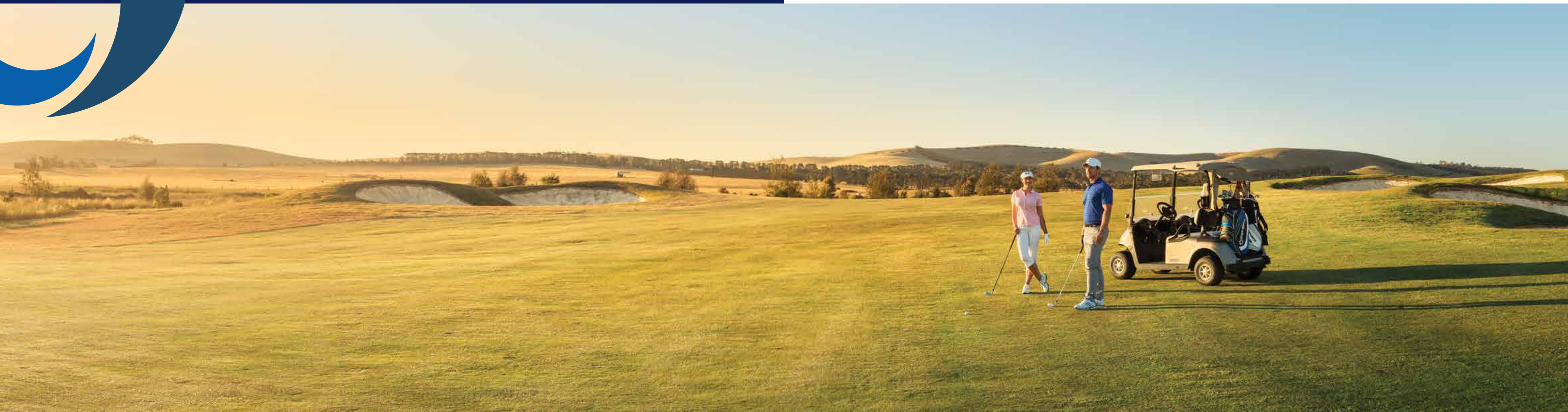
*Resort living, every day.*



mandalay



# Why settle for less?



*The signature 18-hole golf course, designed by 5 times British Open winner, Peter Thomson is just waiting for you to tee-off. Offering championship, womens', juniors' and beginners' teeing options, the course's carefully undulating fairways and integrated greens will enable players of all levels to hone their skills on a course specially built for strategic play.*

Welcome to Mandalay, a lifestyle resort-living development quite unlike any other in the north of Melbourne. Just forty minutes drive from the centre of the City, and within easy reach of public transport, shopping, healthcare, quality education and more, Mandalay offers an idyllic resort lifestyle with wide-open spaces and walkways, a signature 18 hole golf course and the exclusive Club Mandalay lying at the very heart of this fabulous new community. Read on and discover more!







*Enjoy a millionaire lifestyle every day.*



*Come home to so much more.*



Of course you want to live in a lovely home - that's a given. But imagine coming home to your very own exclusive bar and bistro right on your doorstep, too. Maybe you feel like a quick dip in your sparkling blue pool? Perhaps a friendly game of tennis with friends, or a workout in your private gym? Or maybe you just fancy a stroll along the walkways that wind their way through your own golf course, where you enjoy special membership privileges. And now imagine this paradise is nestled in a gorgeous natural landscape surrounded by rolling hills. That's right: now you're beginning to see why we say Mandalay is "Resort living, every day".







## Own your own private facilities.

*Fun, fitness, relaxation for all ages.  
A few minutes stroll from your front door.*



Club Mandalay is the key to your perfect new lifestyle. The hub of our growing community, it offers a wealth of leisure facilities and provides a natural meeting point for you, your friends, family and neighbours. Simply hang with your besties and spend quality time together, play with the kids or enjoy the 25 metre heated swimming pool all year round. You'll also enjoy the fun trivia nights, Munchkins Club, special themed menus and events, Swingfit and more! Staying fit will never get boring in the Club's fully-equipped gym or out on the tennis courts. The knowledgeable and helpful staff that greet you at reception and the golf pro-shop ensure you enjoy it all, and the prestigious café bistro serves beautiful snacks, food and drinks. Even better, you don't just use the facilities – as a Mandalay resident, you own them!



mandalay



## *An idyllic location in the growing North.*



Mandalay nestles in a beautiful private valley in the heart of Melbourne's exciting northern corridor. Major urban centres such as Craigieburn, Epping and Wallan are just a few minutes drive away, offering a dizzying array of shopping and entertainment options. Medical centres, hospitals, and excellent schools such as Assumption College, Kilmore International School and Hume Anglican Grammar are close by, with more to come. Nearby Essendon and Tullamarine airports, employment hubs, and direct access to the Hume Freeway let you work nearby and then come home to your very own private resort lifestyle.



mandalay





*Mandalay offers you larger blocks that allow you to choose the resort lifestyle home of your dreams.*



*Melbourne's leading builders love Mandalay! It's the perfect environment to showcase their finest homes, many specially designed to take advantage of our gorgeous location. Some come "pre-packaged" with the right block, so you know you're getting a home that perfectly suits the land it sits on. You can choose from the many packages available, or simply decide on the perfect block for you and then decide on the builder of your choice. Whichever way you go, Mandalay stands ready to welcome you and your family!*

## Room to breathe. Room for life.



At Mandalay you can choose a block that offers stunning vistas of rolling hills, or nearby delightful Club Mandalay, or overlooking the magnificent fairways of the course. We offer a wide range of blocks that all give you and your family more space to live, and with more space, you can build a home you truly love. Your home should always be your sanctuary and a decent backyard is an essential for the kids or entertaining family and friends, especially with the "grand outdoor rooms" on offer today. Building your brand new dream home means you can shape your lifestyle exactly the way you want it.



mandalay





## Surrounded by a green heart.

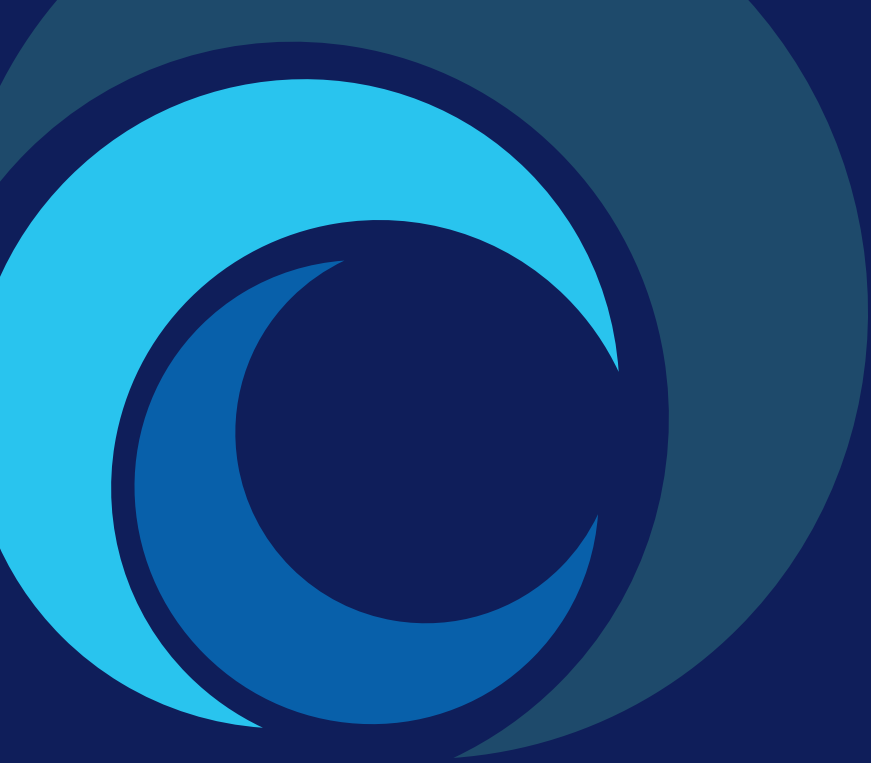
*More time spent together.  
And more quality time.*



Wherever you are in Mandalay the achingly beautiful greens of the Peter Thomson-designed 18 hole golf course enrich your views. All Mandalay homes are within a two minute stroll to the stunning green fairways and for those lucky enough to live on the course itself there are stunning views from your backyard or balcony. You don't have to be a golfer to appreciate this unique environment. The whole course is threaded and complemented by walkways that connect you to; the neighbourhood parks designed to be enjoyed by kids of all ages, bike tracks, wetland vistas, and of course Club Mandalay. So step outside your front door, take a walk around and escape. Breathtaking.



mandalay



# The best in the North.

Mandalay nestles in the major growth corridors for Melbourne, and within easy reach of everything. But not all estates are created equal. Mandalay offers bigger blocks, bigger backyards, and more open space around you. Just forty minutes from the bustling centre of Melbourne, you'll be close to major existing and future urban development, offering exciting employment opportunities and an excellent commute around Melbourne's North, but in a quiet semi-rural environment that is quite unlike other areas. What's more lesser estates have a higher housing density, on smaller blocks. And yet our Mandalay homesites are priced very competitively, as well as offering you unique resort living, every day. Mitchell Shire's population to our north will grow by more than 100% in the next 20 years, and Hume to our South will grow by about 74%. Yet Mandalay will always remain a private green oasis in the middle of all this growth, for you to retreat to at the end of the day and on weekends. It truly is "the best of both worlds". So you really do owe it to yourself to ask yourself the question: why would you and your family settle for less?









# Contents

## **1.0 Introduction**

- 1.1 The Mandalay Vision
- 1.2 Purpose of the Guidelines
- 1.3 Submission Requirements and Development Approval Process

## **2.0 Siting and Orientation**

- 2.1 All Lots
- 2.2 Corner Lots – Specific
- 2.3 Front Setbacks
- 2.4 Side Setbacks
- 2.5 Dwelling Setbacks to Golf Course Boundaries

## **3.0 Dwelling Design**

- 3.1 Architectural Character Mandatory Standards
- 3.2 Building Materials and Colour Palette
- 3.3 Identical Façade Assessment
- 3.4 Environmentally Sustainable Design
- 3.5 Garages and Carports
- 3.6 Driveways and Paving
- 3.7 Letterboxes

## **4.0 Fencing**

- 4.1 Front Fencing
- 4.2 Typical Side and Rear Fencing
- 4.3 Corner Lot Fencing
- 4.4 Fencing Template
- 4.5 Golf Lot Fencing

## **5.0 Plumbing and Ancillary Equipment**

- 5.1 Plumbing
- 5.2 Rainwater Tanks
- 5.3 Air Conditioning Units
- 5.4 TV Antennae and Satellite Dishes
- 5.5 Solar Water Heating
- 5.6 Water Efficiency
- 5.7 Smart Wiring

## **6.0 General Dwelling Information**

- 6.1 Screening
- 6.2 Clothes Lines & Drying Areas
- 6.3 Parking of Heavy Vehicles & Caravans etc
- 6.4 Property Settlement and Timing of Works
- 6.5 Aluminum Roller Shutters to Windows
- 6.6 Window Furnishings
- 6.7 Maintenance of Lots
- 6.8 Signage

## **7.0 Landscaping**



## 1.0 INTRODUCTION

### 1.1 The Mandalay Vision

Mandalay will represent the future of community living in the northern suburbs. Residents will benefit from a well-planned community that will provide a number of lifestyle opportunities centered around a Peter Thomson Signature golf course and a community hub that will boast a clubhouse, restaurant, gym, lap style swimming pool, tennis courts, and other facilities.

The Mandalay master plan has been designed with the environment and its residents in mind. The master plan ensures the best possible access to the surrounding amenities with a network of walking and cycling tracks interlinked with the surrounding parks and community facilities. Mandalay is a lifestyle choice where quality landscape and attention to detail will create a distinctive and quality address for all its residents.

### 1.2 Purpose of the Guidelines

The key purpose of these design guidelines is to achieve a consistently high quality of homes and landscaping that realises the Mandalay Vision.

The guidelines are intended to assist you in considering the design of your home and private garden and how this can contribute to and enhance the overall character of the development. The guidelines will help you through the initial consideration, design process and building of your new home. The guidelines will not only enhance your building experience but will underpin the overall amenity of Mandalay and contribute to creating a vibrant community that you will proudly call home.

These design guidelines may be amended from time to time at the developer's discretion to reflect changes in design and building trends and amendments to legislation affecting building approvals.

### 1.3 Submission Requirements and Development Approval Process

The siting and design of your home is required to be approved by the Mandalay Design Reviewer. **(M.D.R.)** before obtaining building permits. It is mandatory that all plans and other relevant drawings are submitted to the M.D.R. for approval.

To obtain the Developers approval, you must forward the **Mandalay Application for Design Approval Form** (found at the rear of this document) with two (2) legible A3 copies of the documentation listed on the form for approval to:

#### **Mandalay Design Reviewer**

C/- Beveridge Property Developers  
501 Blackburn Road  
Mt. Waverley, Vic 3149

#### **The Submission must include the following in (2 copies) A3 format:**

- A min. 1:200 siting plan including: date and reference number of drawing, north point, lot area calculation, dwelling area calculation, home positioned on the lot with dimensions and setbacks from all boundaries, proposed fencing, crossover and driveway location; clothes line, letter box, water tank, outbuildings and pool position if applicable. Provide the building envelope if applicable to the lot.
- Floor plans at minimum of 1:100 with north point, indicating all rooms, windows, external doors, external fixtures and nominated floor levels; including air conditioning and solar units positions.
- Full elevations indicating wall heights and all external finishes including garage door type; extent of eaves and position of air conditioning and solar units.



- Relevant cross sections showing roof pitches, eaves depth and height of walls along the boundaries; cut and fill including retaining walls where applicable.
- Fence design as per the Mandalay fence template (included) with the client's signature as endorsement or; a plan with all dimensions and materials should be included.
- Schedule of colours and materials to be used externally – provide colour chips or a colour photocopy for reviewing by the M.D.R.

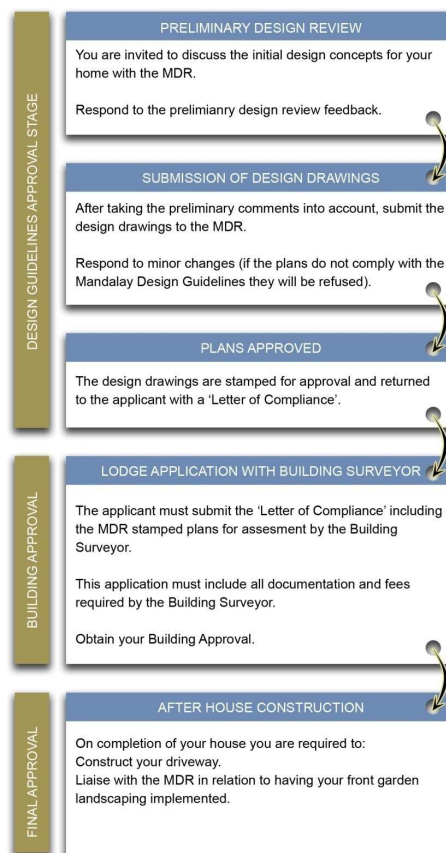
A detailed checklist of submission requirements is provided as part of the Design Approval Application Form included in this document.

The M.D.R. will assess all designs and either provide a notice of approval or specify how the submission conflicts with the guidelines. Designs that substantially comply with the guidelines may be given a notice of approval with conditions requiring the rectification of minor deviations. Furthermore the M.D.R. may make suggestions intended to improve the design.

The M.D.R. will use its best endeavors to assess proposals in the shortest possible time and generally within 10 -14 business days of receipt of a fully completed and compliant application. You must then obtain the approval of the building plans from the local Council or relevant Building Surveyor and/or any other relevant authorities required by the authority approval process. It is the responsibility of the owner that the proposed building works comply with local, state, and Rescode requirements. Neither the Mandalay Design Reviewer nor the developer accepts any responsibility for works that don't comply as noted above.

**Please Note:**

The final decision of all aspects of the Design Guidelines is at the discretion of the M.D.R. and no additional correspondence will be entered into once a decision has been made. The M.D.R. is not liable for any refunds, credit or compensation for its decisions in granting or refusing a submission approval or any discrepancies that may arise from this work.



**Figure 1.1 Design and Approval Process Flow Chart.**



## 2.0 SITING & ORIENTATION

Where possible each dwelling should be designed to maximise the advantages and natural characteristics of the site. Solar angles, views, prevailing breezes, relationship to the street, open space, landscaping and adjoining dwelling type and locations should all be considered to create a responsive design solution in keeping with the intent of the Mandalay vision.

### 2.1 All Lots

Building envelopes have been prepared for all lots in the development (refer to the Plan of Subdivision and Notice of Restriction). These building envelopes indicate the area on each lot where a building can be sited.

- A front (primary) boundary is deemed to be that part of the lot with the street frontage being the smallest dimension, unless the Building Envelope Plan indicates otherwise.
- Only one dwelling may be built on any one lot.
- Lots may not be further subdivided unless:
  - (a) they are designated for medium density housing or for further subdivision; or
  - (b) they have an area greater than 500m<sup>2</sup> and the subdivision would not enable a lot of less than 500m<sup>2</sup>.
- All building works must be contained within the building envelope and subject to approved variations; they must also comply with current Planning Controls / ResCode.
- Every dwelling must be set back from the front boundary according to lot size and type.
- Garages located on the primary street frontage must also be located a minimum of 0.5 metres behind the main façade of the dwelling unless otherwise noted or approved to vary this guideline by the M.D.R.
- Decking and pergolas are permissible encroachments and as such may encroach up to 2 metres into selected setbacks pending approval from the Building Surveyor, local Authority / ResCode and Guidelines conditions.
- Verandahs, porticos and entries are also permitted encroachments within the front setback. The maximum encroachment is 0.5 metres which is also dependant on approval from the Building Surveyor, local Authority/ResCode and Guidelines conditions.

### 2.2 Corner Lots - Specific

Corner lots have significant impact on neighborhood character, and therefore, considerable attention is required to ensure that a desirable outcome is achieved for both the home owner and the Mandalay Estate as a whole.

It is important that corner lots address their prominent position in the streetscape while contributing to the creation of an attractive, safe living environment. They form a gateway to adjoining streets, therefore it is essential that the dwelling addresses both street frontages with articulation of the built form including varying materials, window and door openings.

It is important that corner lot homes are articulated to provide an appropriate corner feature to your home that will 'turn the corner' for both single and two storey dwellings. One or more of the following building elements is to be incorporated into the design as a corner feature;

- Windows
- Feature gable, window, etc.
- A return verandah or balcony
- An articulated step back or setback.
- A change of wall finish (material) that assists in softening the mass of the building



- Blank walls of more than 8 metres to the secondary facade (side street) will not be permitted.
- Corner allotments with proposed crossovers intended to be located to the side street frontage may be considered by the M.D.R. on an individual basis.
- A return verandah or balcony

Alternative submissions will be considered on an individual basis by the M.D.R.

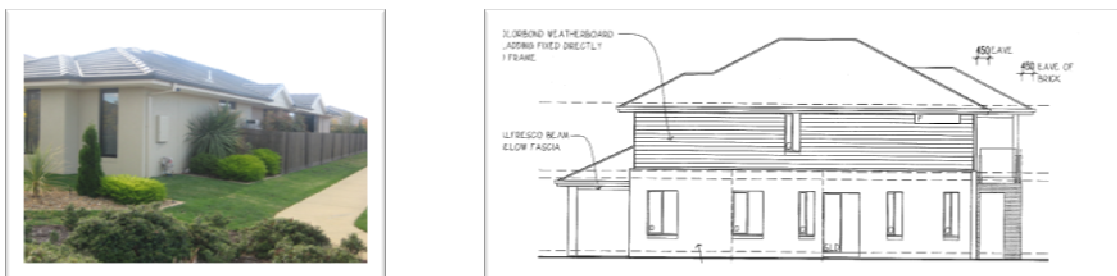


Figure 2.2 Examples of encouraged treatments on corner allotments

### 2.3 Front Setbacks

LOT SIZE M <sup>2</sup>	MINIMUM habitable FLOOR AREA M <sup>2</sup> (excludes garages, carports, porches, porticos, verandahs, alfresco areas)	FRONT SET BACK
<300m	120m <sup>2</sup> (12.90sq)	A minimum of 3.0m and a maximum of 3.5m from the front boundary.
300m <sup>2</sup> - 450m <sup>2</sup>	120m <sup>2</sup> (12.90sq)	A minimum of 4.0m and a maximum of 4.5m from the front boundary, except where the front boundary abuts the golf course, in which case a minimum of 3.0m and a maximum of 3.5m from the front boundary.
451m <sup>2</sup> – 600m <sup>2</sup>	150m <sup>2</sup> (16.14sq)	A minimum of 4.5m and a maximum of 5.0m from the front boundary, except where the front boundary abuts the golf course, in which case a minimum of 3.0m and a maximum of 3.5m from the front boundary.
Greater than 600m <sup>2</sup>	180m <sup>2</sup> (19.37sq)	A minimum of 5.0m and a maximum of 5.5m from the front boundary, except where the front boundary abuts the golf course, in which case a minimum of 3.0 and a maximum of 3.5m from the front boundary.

### 2.4 Side Setbacks

Side setbacks need to allow for adequate landscaping and clear pedestrian access around the dwelling. This will ensure that if retaining walls are necessary there will be a sufficient transition between dwellings and their boundaries. Generally single storey dwellings must have a minimum side setback of 1 metre at ground floor level, however zero lot line construction may be considered if it accords with all relevant authority standards including building envelope plans and profiles. This also applies to boundary setbacks on double storey developments.

On corner lots, buildings must be set back a minimum of 2.0 metres from the secondary street frontage (the smaller lot dimension generally defines the primary frontage). Refer Figure 2.3 for details.



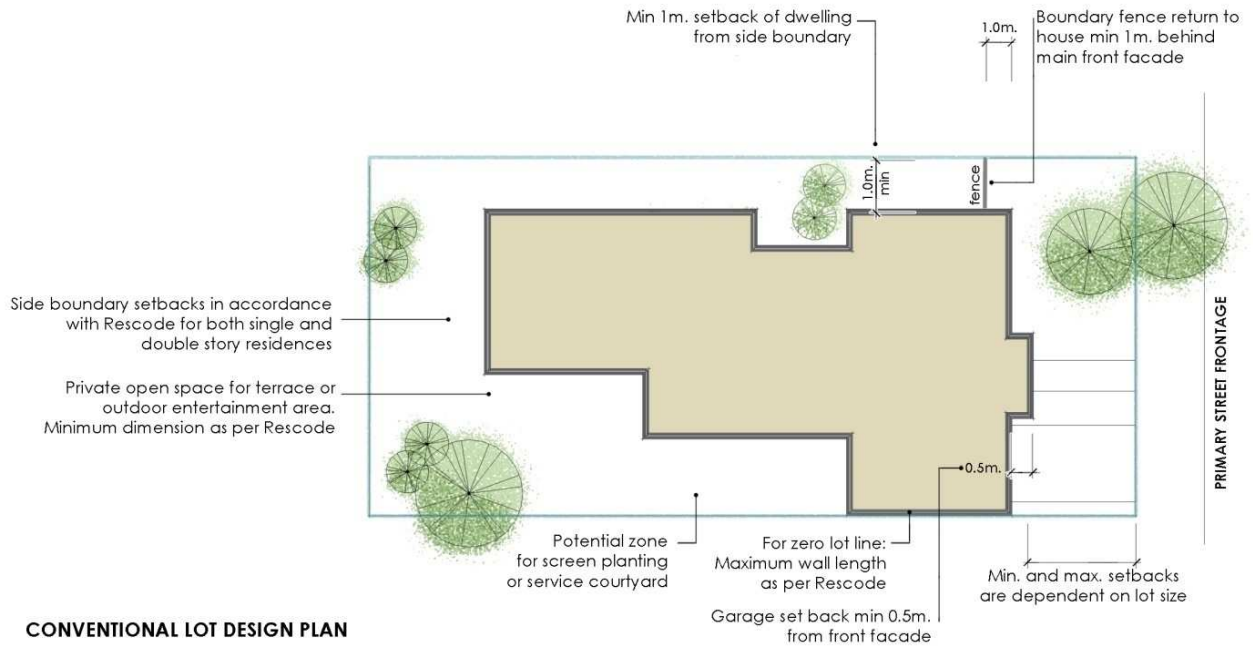


Figure 2.3

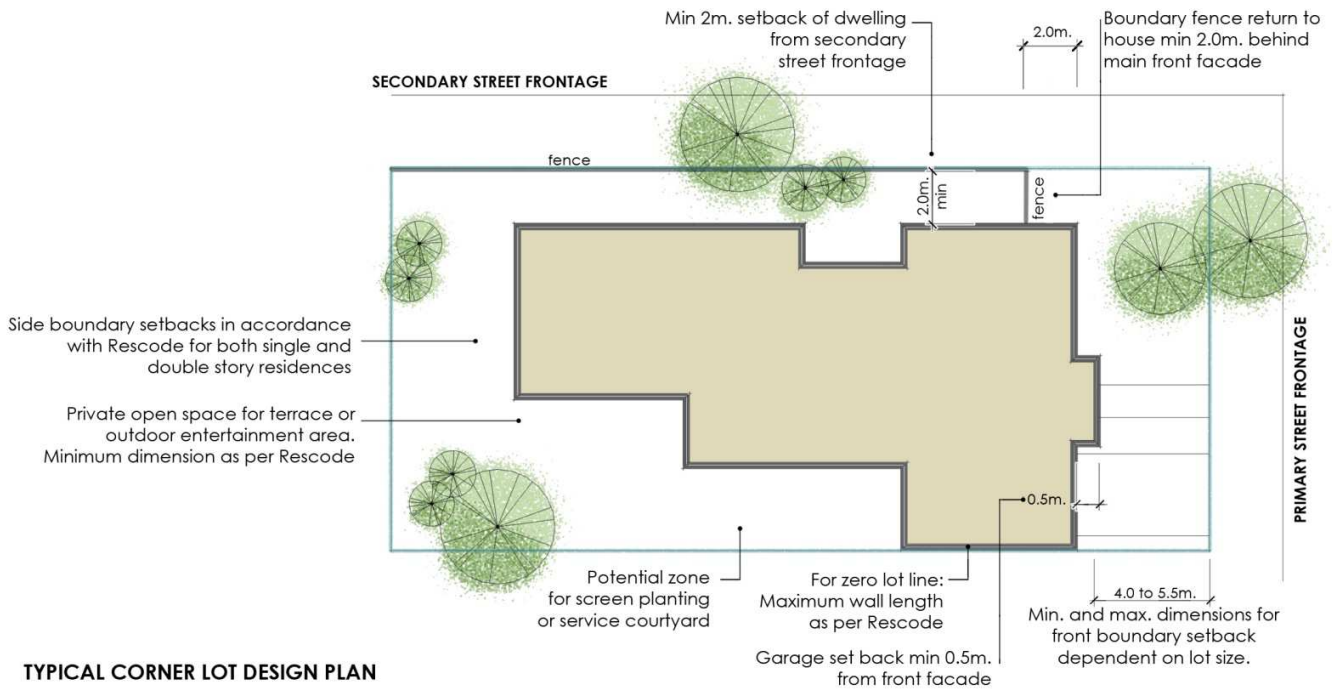


Figure 2.4



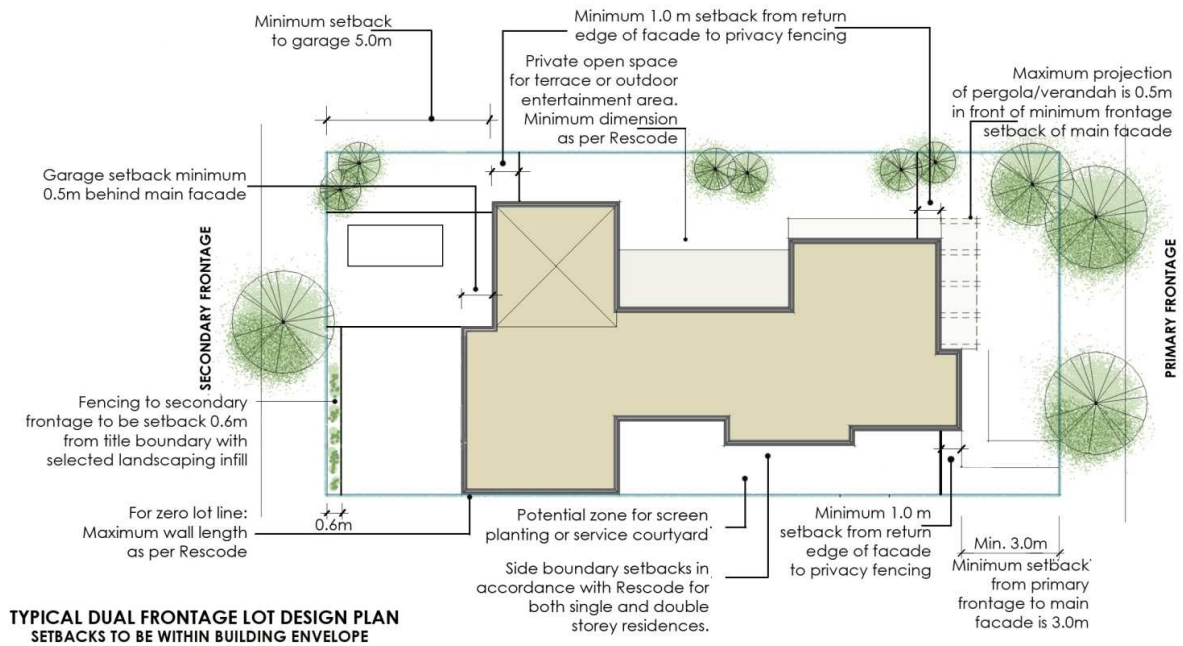


Figure 2.5

## 2.5 Dwelling Setbacks to Golf Course Boundaries

Dwellings that have a boundary abutting the golf course boundary are required to have a minimum setback of 3.0 metres from that boundary to promote usable external open space whilst minimizing amenity impact on adjoining properties including over shadowing and overlooking.

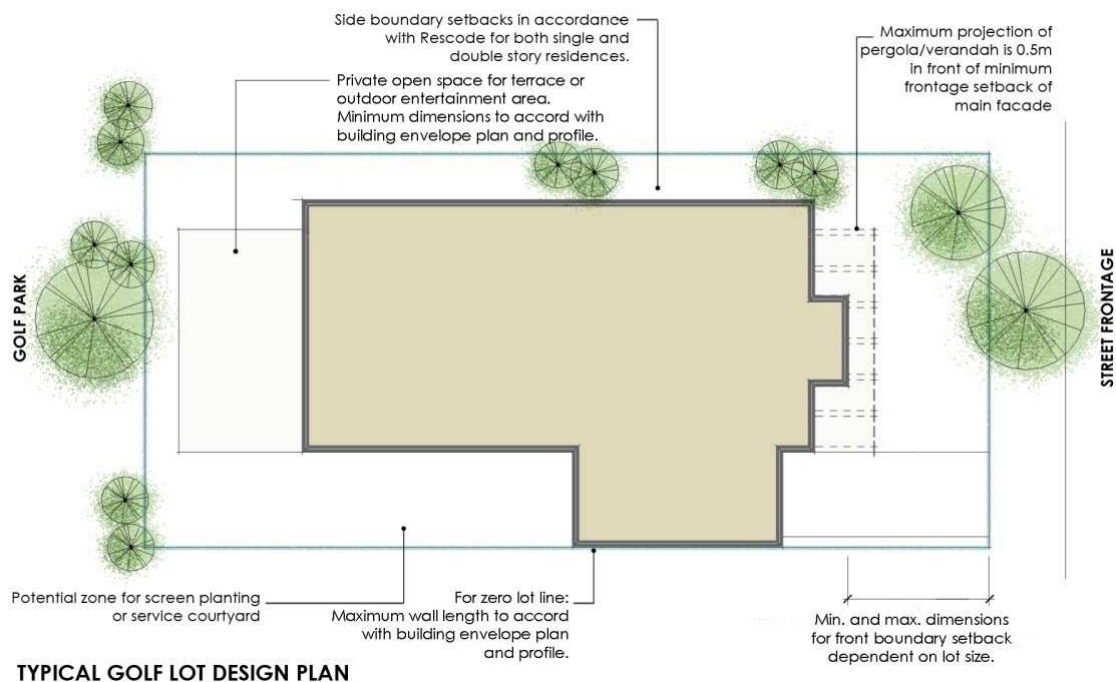


Figure 2.5a



## 3.0 DWELLING DESIGN



Figure 3.1 Examples of preferred dwelling types

### 3.1 Architectural Character Mandatory Standards

- No dwelling may exceed two storeys in height. With a maximum height not exceeding ResCode.
- Ceiling heights for all dwellings must not be less than 2.4 metres above floor level.
- All dwellings must have a verandah, portico, porch or other similar entrance feature surrounding the front entrance.
- Entry porches, verandahs and pergolas must be sympathetic to the overall dwelling design.
- Kit homes and dwellings constructed of second hand materials are not permitted, except with the approval of the M.D.R.
- The main pedestrian entry (front door) or access way to the main pedestrian entry must be visible from the primary street frontage.
- Roof pitches are to be a minimum of 22 degrees. Alternate roof forms including combinations will be considered by the M.D.R. provided it can be demonstrated that they comply with the overall objective and intent of the guidelines.
- Unless otherwise specified or considered as meeting the overall objectives of the guidelines by the MDR, all roofs must be designed having a minimum eaves width of 450mm. Eaves to the frontage of a dwelling must return and continue a minimum distance of 500mm along the connecting return wall and or walls from the said frontage.  
Note. Walls constructed on side boundaries will be exempt from the eaves requirements unless otherwise directed by the MDR.  
Corner lot dwellings must continue the 450mm eaves profile to both street frontages, then returning the minimum 500mm as noted above unless otherwise approved by the MDR.
- Dwellings designed on golf course lots must have a minimum eaves width of 450mm which is continuous to all elevations unless otherwise approved by the M.D.R.
- Roofing materials must complement the design and style of the proposed dwelling. Roof sheeting is to be non-reflective. (muted tones are preferred) Untreated galvanised or zinc finished, tray deck or fibre cement roof materials will not be approved with the intent to minimise reflection issues caused by light coloured or untreated roof surfaces.



### 3.2 Building Materials and Colour Palette

An important element in maintaining a high quality of residential neighborhood character is the control of external building materials, colours and other related finishes. Natural colours are encouraged as they enhance the architecture and landscaping vision for Mandalay.

External walls of each dwelling must be constructed of either:

- Face brickwork
- Rendered or bagged brickwork/ concrete block but must be painted or coloured
- Weatherboards, composite cladding materials and cement sheeting (painted rendered or similar textured finish).
- Selected stone.
- Muted colours and finishes shall be used to blend with the natural setting of Mandalay.
- External windows and doors other than those utilized in an entrance situation are not to contain reflective, frosted, coloured or patterned film on glass unless governed by authority and/or ResCode requirements or approved by the M.D.R.



**Figure 3.2 Examples of preferred external colours, materials and finishes.**



### 3.3 Identical Façade Assessment

In order to protect your and your neighbor's investment, two dwellings of the same front facade design shall not be built within 5 dwelling lots of the subject property, this would include lots either side, opposite and other street frontages where applicable (Refer Figure 3.3).

No concept designs and or façade only submissions will be accepted. I.e. submissions must include all information as requested on the Design Approval Application form to initiate the approval process.

**The final facade assessment decision will be at the discretion of the M.D.R.**



Figure 3.3 Facade Assessment

### 3.4 Environmentally Sustainable Design

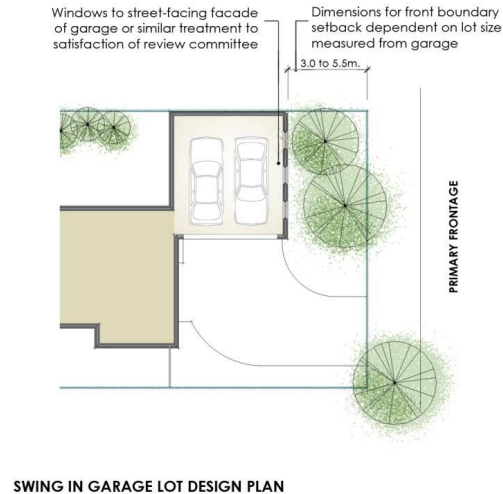
This development encourages good environmental design as it positively contributes to the reduction of greenhouse gases, biodiversity, conservation and water cycle management and we encourage good environmentally sustainable design. Mandalay has been designed with a "Third Pipe" recycled water network that will provide each property with the opportunity of reducing demand on potable water resources.

### 3.5 Garages and Carports

It is preferred that where practicable, garages and carports be designed to minimise their visual impact to the streetscape. All garages must be constructed in harmony with the main dwelling by using materials and colours which reflect the overall architectural theme and vision of Mandalay. In assisting to minimise the visual impact of the garage as a dominant feature to the dwelling façade, the guidelines encourage roof construction of either garage or carport to be incorporated within the main roof form of the dwelling. This intention also extends to the appearance and materials proposed for the garage door to ensure it too reflects the visual connectivity with the proposed dwelling.

- The garage or carport must be constructed at the same time as the dwelling.
- Garages or carports located on the primary street frontage must be located either on the side boundary or within 1.5 metres of that side boundary unless otherwise noted or approved to vary this guideline by the M.D.R.
- Garages or carports located on the primary street frontage of a corner lot (excluding a dual frontage lot) must also be located a minimum of 0.5 metres behind the primary frontage façade of the dwelling unless otherwise noted or approved to vary this guideline by the M.D.R.
- Where garages or carports are located on the secondary street frontage of a corner lot (unless otherwise shown on the plan of subdivision), they must be Setback 5.0 metres from that secondary street boundary and located on or within 1.5 metres of the rear boundary.
- Swing in garages or carports may be permitted subject to special consideration by the M.D.R. The standard front setbacks will still apply. All garage or carport walls addressing primary street frontage must be designed to address the said street frontage. i.e. with the inclusion of windows, first floor construction directly over, building articulation, combined roof forms and material finishes that compliment the adjoining dwelling. (Refer Figure 3.4)
- Unenclosed sides of garages or carports are not permitted to face a street frontage but may be located behind garages and residences. The M.D.R. reserves the right to limit the area of an unenclosed garage or carport under roof.
- Garage or carport design must match or complement the home in respect to materials, roof pitch, design, colour, external appearance and quality of construction.
- Individual garage doors shall not be more than 6 metres in width. Roller doors are not permitted.
- The garage or carport must be capable of accommodating a minimum of two vehicles. Golf carts must be parked in a garage, carport or a specific storage area to ensure that the cart is out of public view whenever not being used.
- 3 car garages will be assessed on their merits; and should be integrated into the body of the dwelling, with a door of not more than 5M to the double car accommodation incorporating an additional single door to the single garage element and setback a minimum of 500mm from the face of the adjacent garage.





**Figure 3.5**



**Figure 3.5a Examples of approved garage doors.**

### 3.6 Driveways and Paving

- Driveways must be fully constructed prior to occupying the dwelling.
- A colour sample of the proposed driveway material must be provided with the application submission. Plain colour concrete driveways will not be permitted. Exposed aggregate drives are encouraged as they integrate well within the landscape.
- Driveways shall not exceed 4.5 metres in width at the street crossover and can taper to the maximum width of the garage door or doors.
- Driveways will have a minimum 0.4 metres setback from the side boundary for landscaping irrespective of whether the side boundary is fenced or not.

The incorporation of cart storage and vehicle parking as part of the garage design is recommended. Cart dimensions will vary between manufactures.

It is recommended that you install a 0.1 metre diameter PVC conduit under the driveway to accommodate future irrigation requirements for the garden bed required between the driveway and side boundary.

Driveways must be constructed of:

- Brick and/or concrete pavers;
- Coloured concrete;
- Saw-cut coloured concrete;
- Concrete with exposed aggregate;
- Asphalt with brick borders.

**Exposed aggregate**



**Concrete pavers/Saw-cut coloured concrete**



**Figure 3.6 Examples of approved driveway finishes.**

### **3.7 Letterboxes**

Letterboxes should be designed to compliment and match the dwelling, using the similar materials, colours and finishes. Single post supporting letterboxes will not be permitted.



**Figure 3.7 Examples of approved letterboxes.**

## **4.0 FENCING**

The fencing of your home and that of your neighbour will affect the overall aesthetics of the Mandalay Estate as it plays an important role in the general definition of the streetscape and transition between public and private spaces. Whilst fencing is intended to provide privacy and a sense of security between dwellings it will not be permitted along main street frontages and within the main front setback of the proposed dwelling.

### **4.1 Front Fencing**

Unless constructed by the Developer or with the prior approval of the M.D.R. no fences shall be constructed along the front or street boundary, or within primary frontage setback.



## 4.2 Typical Side and Rear Fencing (unless otherwise specified)

Unless otherwise specified in these guidelines, fence construction between adjoining lots must be in general accordance with figure 4.2 below, and must finish a minimum of 1 metre behind the primary street frontage façade.

Fences between adjoining lots must be constructed from timber palings and must have timber capping with timber posts exposed to both sides of the fence as per Figure 4.2.

Adjoining owners are solely responsible for the construction and maintenance or replacement of fencing between adjoining lots.

No side fences are to occur within the front garden.

Subject to the approval of the M.D.R., retaining walls or courtyard defining walls may be acceptable in the zone between the front boundary and the front of the dwelling, but must be complimentary in material finish and design to the main dwelling.

For screening and service yards, additional timber fences are acceptable if setback not less than 1 metre from the relevant front corner of the dwelling and are to be in accordance with the Mandalay timber fencing details.

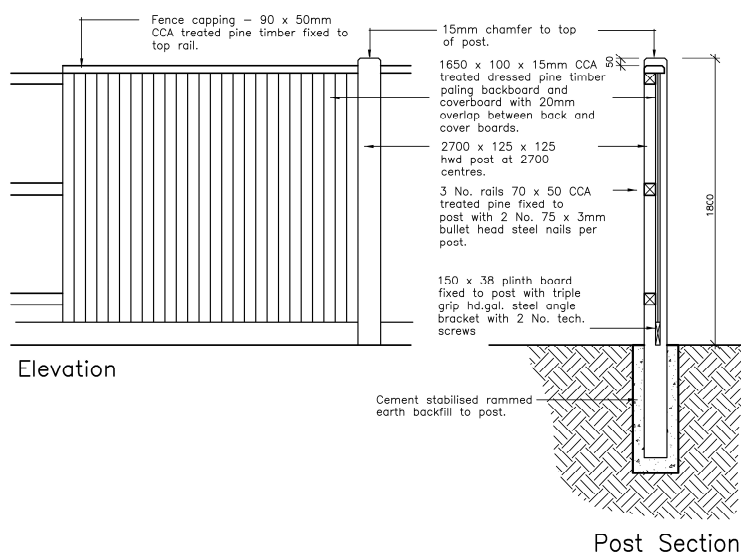


Figure 4.2 typical side & rear fencing

## 4.3 Corner Lot Fencing

Corner timber fencing (abutting a road reserve or park) will be provided by the developer, constructed in accordance with Mandalay fencing options and will;

- Not exceed 1.8 metres in height and constructed in accordance with the approved Mandalay timber fencing details. Figure 4.3.
- Remain at least 1 metre behind the front facade and return to abut the dwelling. This fencing must also be setback behind the corner treatment.
- Wherever permitted, gates (constructed at expense of purchaser) must be consistent with the adjoining fencing details.

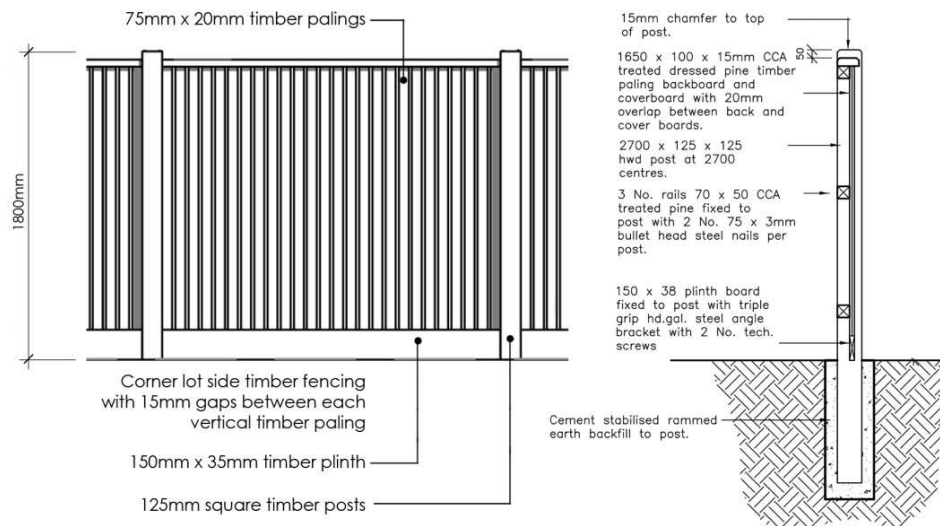
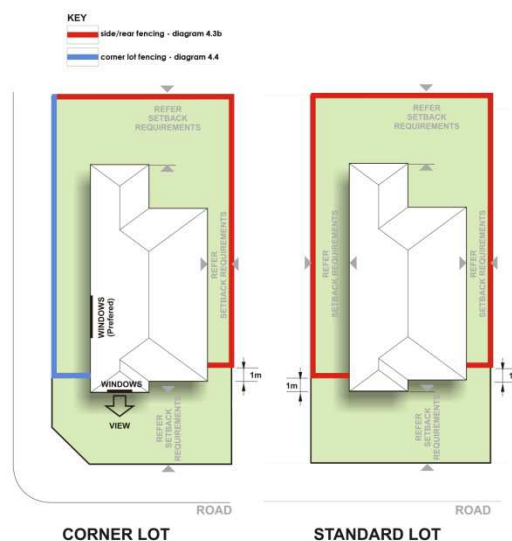


Figure 4.3 corner lot fencing

#### 4.4 Fencing Template

Corner and standard lot fencing plan can be adopted by the owner by signing and attaching this plan and those of diagrams 4.2, 4.3 and 4.4 with the application form submission as an endorsement that the fencing will be carried out as per the Mandalay fencing requirements



4.4 Fencing (template) locations for standard and corner lots

#### 4.5 Golf Lot Fencing

All fencing to the boundaries of golf lots that adjoin the golf course will be installed by the developer at no expense to the purchaser. The fencing will be no higher than 1.5m above the natural finished surface level and constructed using post and rail framework infilled with black PVC coated steel fencing. The bottom rail of the fence construction will be used as the plinth runner.

The developer will also provide gate access to selected allotments that are connected with paths accessing the golf course. No gates will be allowed in fences addressing the golf course unless they open onto a designated pedestrian path. Wherever allowed, gates must be consistent with fence details and subject to the M.D.R. approval.

If a lot already has a fence or wall being part of a fence or wall erected by the developer, the owner must not remove, damage or disfigure it and must maintain it in good condition.





**Figure 4.5 Typical Golf Lot Fencing Detail**

Notes for construction/materials:

2 Metre spacing for posts

Overall fence height is not to exceed 1500mm from natural ground level

Posts are to be black powder coated (50X50 square section steel)

## **5.0 PLUMBING & ANCILLARY EQUIPMENT**

### **5.1 Plumbing**

Mandalay has been designed with a "Third Pipe" recycled water network that will enable each property to reduce the demand of potable water resources. Dwellings must connect all toilets to the "Third Pipe" recycled water network and provide a minimum of two garden tap outlets, one to the frontage area of the site and the other in the rear area of the site. All garden tap outlets must be connected to the "Third Pipe" recycled water network and colour coded accordingly.

- All external plumbing including spa pumps/motors are to be concealed from public view. Downpipes and gutters are exempt from this requirement.
- No exposed plumbing waste piping is permitted.
- Gutters and downpipe treatment must compliment the house colour.
- Taps, including recycled water taps are not to be free standing and are to be wall or fence mounted.

### **5.2 Rain Water Tanks**

Rain water tanks are encouraged as an environmental initiative however they must be positioned and or screened to restrict them from public view.

### 5.3 Air Conditioning Units

- Air-conditioning units and exposed components thereof are to be located below the roof ridge line and towards the rear of the property to minimise visual impact. They are to be colour toned to match adjoining wall or roof colour. The units shall be of low profile type and wherever appropriate, be fitted with noise baffles.
- Final position of units to be considerate of lot location i.e. golf course, park land etc. In these areas air-conditioning units should be positioned to minimise visual impact.

### 5.4 TV Antennae and Satellite Dishes

The Mandalay estate has been equipped with the provision of an optical fibre network enabling the supply of free to air digital and pay television. Therefore TV antennae and other related receivers will generally not be required.

In the unlikely event that an antennae and satellite dish installation (maximum 1 metre diameter) is required, it is to be located toward the rear of the dwelling and below the ridgeline. The intent is to minimize the visual impact from adjoining streetscape and general public areas.

- CB radio antennae will not be permitted.

### 5.5 Solar Water Heating

The Victorian Government supports the installation of solar hot water heaters through the Victorian Government Solar Hot Water Rebate Program. This is an efficient method of energy conservation and is highly encouraged. For more information visit the Sustainability Victoria website at [www.sustainability.vic.gov.au](http://www.sustainability.vic.gov.au).

Solar hot water piping for dwellings or swimming pools are permitted provided they are located on the roof and installed at the same pitch angle as the roof and where practical they are to be located at the rear of the property to minimise visual impact from public viewing. Tanks for such systems are not permitted to be located on the roof and must be screened from public view.

### 5.6 Water Efficiency

Water re-use and conservation in today's climate are very important considerations when designing your home. Solutions may include the use of rainwater tanks; low water use plants in the garden, water re-use systems and the use of low water use shower heads and toilets, etc. More information on these important issues can be obtained from Mitchell Shire Council, [www.mitchellshire.vic.gov.au](http://www.mitchellshire.vic.gov.au), or Yarra Valley Water, [www.yvw.com.au](http://www.yvw.com.au).

### 5.7 Smart Wiring

Recognizing technological advancement in home communications and automation systems, the Mandalay estate has been equipped with an advanced Fibre to the premises (FTTP) network. Initially however it will be necessary for all dwellings to be provided with a lead in communications cable from the title boundary to the enclosure housing the network termination device (NTD). This is to be installed by an accredited electrician in accordance with OptiComms cable entry guidelines. Information in relation to the installation guidelines can be obtained by contacting the OptiComm help desk on 1300 137 800 or accessing the following link <http://www.opticomm.net.au/html/services.htm> Depending on your personal budget and lifestyle requirements, smart wiring will enable you to combine phone and fax lines, pay TV cabling, sound, computer and internet, intelligent lighting, security, home automation and much more at the one time and it gives the flexibility to add and change in the future without expensive re-wiring costs.



## **6.0 GENERAL DWELLING INFORMATION**

### **6.1 Screening**

To avoid detracting from the visual quality or the character of the streetscape unsightly items and equipment should be screened from the street and public view.

Ground mounted equipment such as heating and cooling units, hot water services including rubbish disposal containers etc shall be screened from public view and shall not be visible from the street, golf course or parkland.

### **6.2 Clothes Lines & Drying Areas**

Clothes lines and drying areas shall be located so that they are not visible to public viewing. Consideration should be given to using an extend-a-line which can be stored when not in use.

### **6.3 Parking of Heavy Vehicles and Caravans etc.**

Trucks or commercial vehicles (exceeding 1.5 tones), recreational vehicles, golf carts and caravans shall be screened from public view when parked or stored.

### **6.4 Property Settlement and Timing of Works**

Construction of all dwellings must commence within twenty four (24) months of settlement and construction must be completed within twelve (12) months of work commencing.

Builders / Developers must settle within twelve (12) months of the Contract of Sale being signed. They must also lodge drawings of the proposed display home to the MDR for review within ninety (90) days of the Contract of Sale being signed. Construction of the dwelling must be completed within 300 calendar days after receiving developer's approval of the proposed display home.

These conditions can be varied by specific terms in the Contract of Sale.

### **6.5 Aluminium Roller Shutters to Windows**

The use of aluminium roller shutters to windows is prohibited.

### **6.6 Window Furnishings**

Internal windows furnishings which can be viewed by the public must be fitted within three (3) months of occupancy. Sheets, blankets, or similar materials for which window furnishing is not their primary use, will not be permitted.

### **6.7 Maintenance of Lots**

The Purchaser shall not allow any rubbish including site excavations and building materials to accumulate on a lot (unless the rubbish is neatly stored in a suitably sized industrial bin or skip) or allow excessive growth of grass or weeds upon the lots.

The Purchaser shall not place any rubbish including site excavations and building materials on adjoining land, reserves or in any waterway.

The Developer or its agents may enter upon and have access over a lot at any time without creating any liability for trespass or otherwise to remove for rubbish, maintain, slash or mow a lot and the Purchaser agrees to meet the Developer's reasonable costs of doing so.

### **6.8 Signage**

Signage is not permitted on residential lots with the following exceptions:

- Display home signage with the written approval of M.D.R.

- Builders or tradespersons identification (maximum 600mm x 600mm) required during dwelling construction. These signs must be removed within 10 days of the issue of the Certificate of Occupancy.
- One sign only advertising the sale of a complete dwelling is permitted. These signs must be removed within 10 days of the property being sold.
- There are to be strictly no signs erected for the purposes of advertising the sale of a vacant lot other than any sign that relates to the sale of such lot by the Developer.
- Other signs may be permitted with approval of the M.D.R.

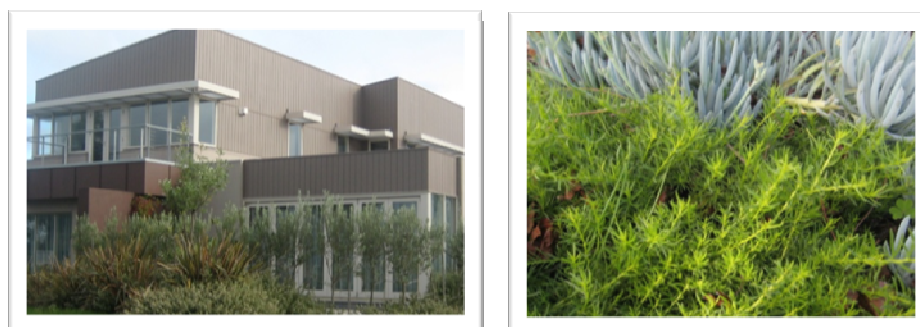
## 7.0 LANDSCAPING

The Developer will provide Mandalay residents with high quality landscaping to both the streetscapes and also individual lots. This investment in quality public and private landscaping adds significant value to any community. It not only promotes an attractive neighborhood but also improves the value of your dwelling. Appropriately designed gardens contribute in a positive way to the quality of the built environment.

Gardens will be environmentally responsive by utilizing appropriate drought tolerant sensitive plants, organic or mineral mulches and drip irrigation systems.

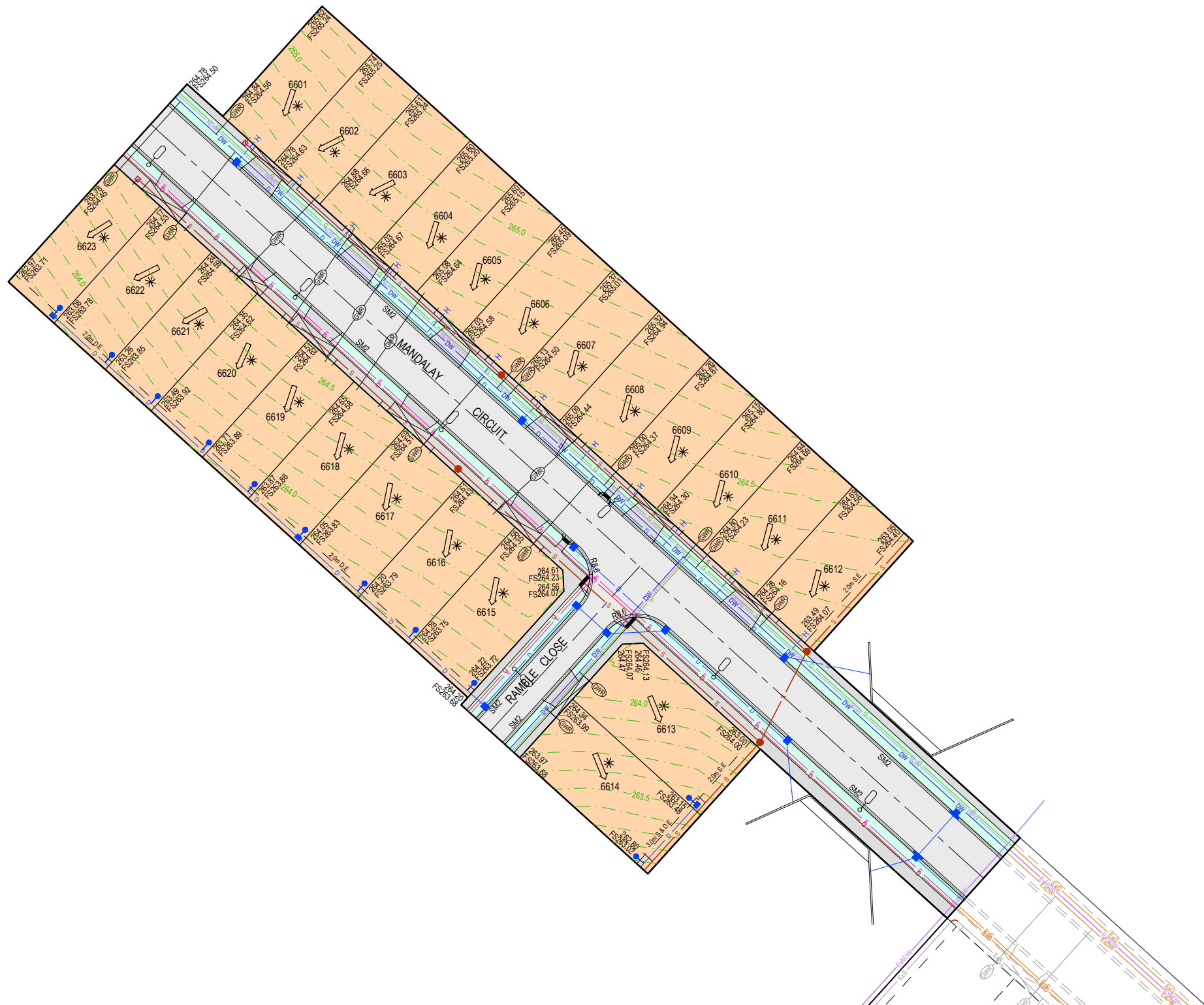
Included in the purchase of your land is a landscaped front garden where you will be given the opportunity to work with our landscape team to design a garden that is specifically tailored to meet your individual tastes. In order to commence construction of your garden you will need to contact the Mandalay Design Reviewer once you have requested Certificate for Occupancy from Council.

- You must contact the Mandalay Design Reviewer prior to obtaining CFO and advise that you are ready to meet with the landscape consultant.
- The Mandalay Design Reviewer will contact the nominated landscape Consultant and advise them of your position
- The Landscape consultant will contact you and make an appointment with you to go over the available options and tailor them to be more specific to your tastes.
- Once the plans have been drawn and approved by you the Developer will have a maximum of 6 months in which they must carry out those works to your front garden. This is to allow for specific periods of the year in which planting is not desirable.
- It will be your responsibility to keep the plants and shrubs / trees alive and establish the grass and maintain the garden once complete.



**Figure 7.0 encouraged landscape elements**





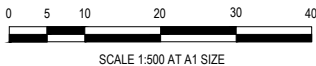
**LEGEND - LAYOUT PLAN**

- STORMWATER DRAIN, PIT & PROPERTY INLET
- SWALE DRAIN
- SEWER & MAINTENANCE STRUCTURES
- HOUSE DRAIN
- SERVICE CONDUITS
- TACTILE PAVERS
- EXISTING ELECTRICITY (UNDERGROUND)
- EXISTING ELECTRICITY (OVERHEAD)
- EXISTING GAS
- EXISTING TELSTRA
- EXISTING WATER
- EXISTING RECYCLED WATER
- EXISTING STORMWATER DRAIN
- EXISTING SEWER
- EXISTING HOUSE DRAIN
- EXISTING SWALE DRAIN
- EXISTING SURFACE LEVEL
- FINISHED BUILDING LINE LEVEL
- FINISHED RIDGE LINE LEVEL
- TOP OF RETAINING WALL
- BOTTOM OF RETAINING WALL
- RETAINING WALL
- ZERO LOT LINES
- PAVEMENT TREATMENT
- STRUCTURAL FILL > 200mm DEEP
- SELECTED FILL > 200mm DEEP
- DIRECTION OF FALL
- OVERLAND FLOW
- ALLOTMENT TO BE GRADED EVENLY IN
- DIRECTION OF FALL TO LEVELS INDICATED
- CONCRETE EDGE STRIP WITH SUBSOIL DRAIN
- "NO ROAD" SIGN & BARRIER
- LIMIT OF WORKS
- EXISTING TREE TO BE REMOVED
- PERMANENT SURVEY MARK
- TEMPORARY BENCH MARK
- PROPOSED DRIVEWAY
- PROPOSED ELECTRICAL PIT
- PROPOSED STREET LIGHT

**WARNING**  
**BEWARE OF UNDERGROUND SERVICES**  
The locations of underground services are approximate only and their exact position should be proven on site.  
No guarantee is given that all existing services are shown.  
Locate all underground services before commencement of works  
**DIAL 1100 BEFORE YOU DIG**  
www.1100.com.au

**PRELIMINARY PRINT**  
**NOT FOR CONSTRUCTION**

© COPYRIGHT All rights reserved Beveridge Williams & Co. Pty Ltd has granted a licence to the principle to use this document for its intended purpose. No unauthorised copying is permitted									
P1	ISSUED FOR INFORMATION	23.09.21	M.F.J.	R.W.					
REV	DESCRIPTION	DATE	DRN.	APP.	REV	DESCRIPTION	DATE	DRN.	APP.



Designed R. WICKETT  
Date 23.09.2021  
Drawn M.F. JAURIGUE  
Approved  
Date  
PS Number

**BW** Beveridge Williams  
1 Glenferrie Road  
Malvern VIC 3144  
ph: 03 9524 8888  
www.beveridgewilliams.com.au

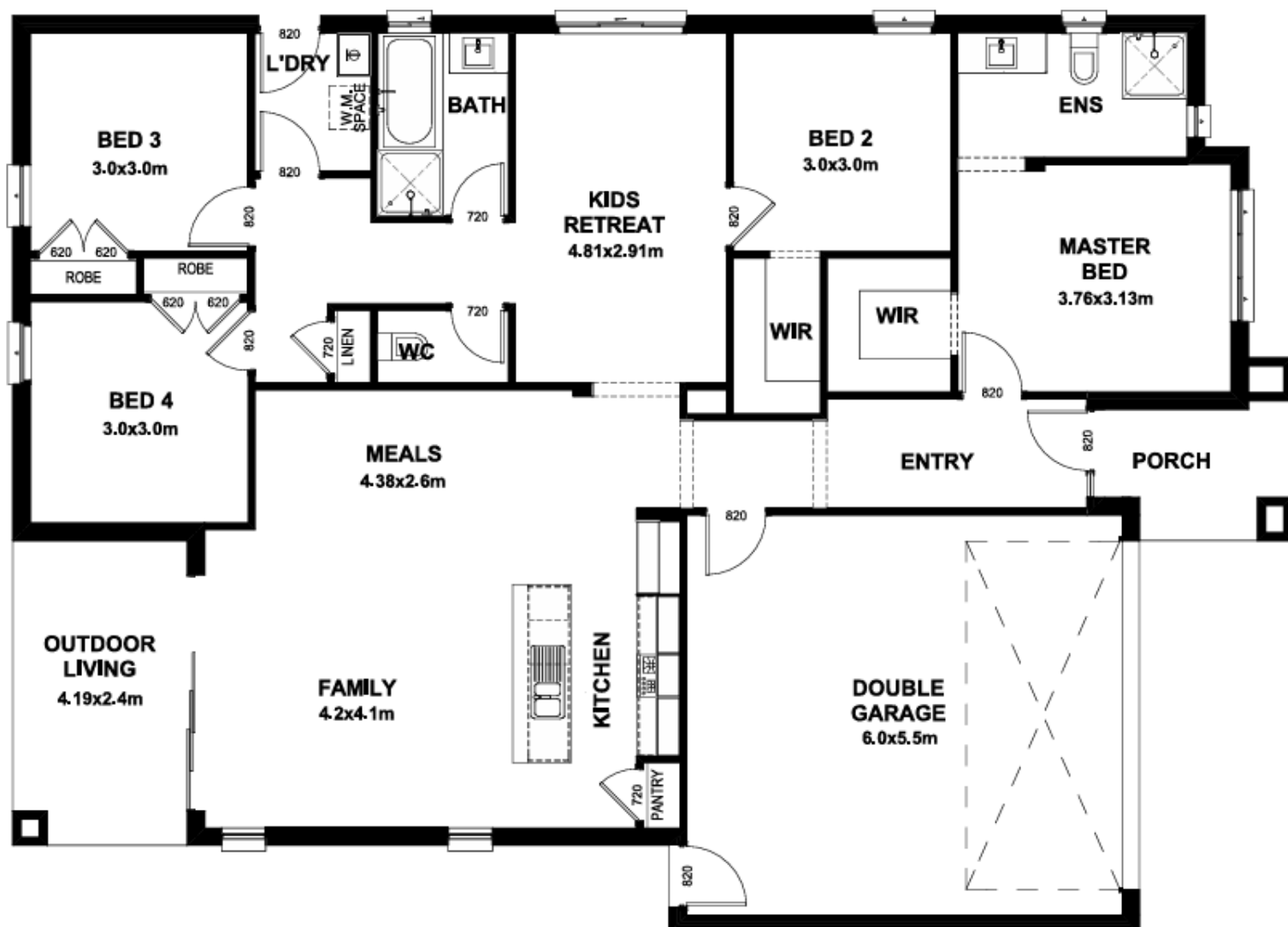
Project Details  
MANDALAY  
STAGE 66  
MITCHELL SHIRE COUNCIL  
Drawing Title  
BUILDERS PLAN

Sheet 01 of 01

Scale  
1:500 @ A1

Project Ref Stage No Drawing No Rev  
1600048 66 BLD P1







# INCLUSIONS





# EXTERNAL

## SITE COSTS

- Fixed Price Site Costs including Rock Excavation

## EXTERNAL ITEMS

- Concrete Roof Tiles as per colour document **1**
- Colorbond Fascia, Gutter and Downpipes **2**
- Bricks as per colour document **3**
- Natural colour Mortar with Rolled joints
- Brickwork above Windows to front Facade only
- Painted Infills above Garage Door and all Windows and Doors to sides and rear
- Plaster Ceiling to Porch and Outdoor Living (if applicable)
- Two part Termite Treatment
- Colour Through Concrete Driveway and Path to Porch **4**
- Letterbox (with numbers)

## GARAGE

- Colorbond Sectional Panelift Garage Door with Motor and 2No. Remote Controls **5**
- Weatherproof Door to Rear of Garage (plan specific)
- Flush Panel Garage/House Access Door (plan specific)
- Concrete Floor

## DOORS - EXTERNAL

- Feature 2040mm high x 820mm wide Front Entry Door with Clear Glazing
- Double Cylinder Deadbolt to Front Entry
- Entrance set to all external Hinged Doors and Garage/House Access Door (plan specific)



Natural colour mortar with rolled joints



2040mm high x 820mm wide front entry door and entrance set





# KITCHEN



- 900mm Stainless Steel Upright Cooker and Canopy Rangehood
- Stainless Steel Dishwasher
- 20mm Caesarstone Benchtops with 20mm Square Edge
- Laminate Base Cabinets
- Laminate Overhead Cabinets with Bulkhead above
- Stainless Steel Double Bowl Sink
- Mixer Tap
- Tiled Splashback
- 4No. Melamine Shelves to Pantry



Cabinet handles

**Domain**  
Quality Appliances for Everyday Living



Stainless Steel Dishwasher



900mm Stainless Steel Upright Cooker



900mm Stainless Steel Canopy Rangehood



Mixer Tap



Stainless Steel Double Bowl Sink



20mm Caesarstone Benchtops with 20mm Square Edge



# INTERNAL

## INTERNAL ITEMS

- Engineered waffle Slab
- Pine Wall Frames and Roof Trusses
- 2590mm Ceiling height to Single Storey **6**
- 2590mm Ceiling height to Ground Floor and 2440mm to First Floor of a Double Storey
- Plasterboard Walls, Ceilings and Cornice
- 67mm Single Bevel Architrave and Skirting
- 75mm Scotia Cornice
- 1No. Melamine shelf with 1No. Hanging Rail to Bedroom Robes

## DOORS - INTERNAL

- 2040mm high Flush Panel Doors throughout **7**
- Lever Door Handles

## WINDOWS

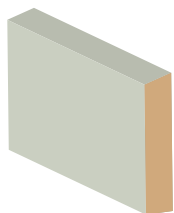
- Obscure Glazing to Ensuite, Bathroom and WC
- Aluminium Sliding Windows (unless otherwise nominated)
- Window Locks to all openable Windows (keyed alike)
- Venetians to Front Windows, Roller Blinds to remaining Clear Glazed Windows (excluding stairwell) and Sliding Doors

## PAINTING

- 3No. Coat Paint system throughout **8**
- Gloss Enamel Paint to Architrave and Skirting

## FLYSCREEN / SECURITY DOORS

- Flyscreens to all openable Windows
- Barrier Doors to all Sliding Doors



67mm single bevel architrave and skirting



Internal lever door handles



75mm scotia cornice





# BATHROOM

## BATHROOM

- Vanity Basin
- Acrylic Bath
- 20mm Caesarstone Benchtops with 20mm Square Edge
- Laminate Base Cabinets
- Semi-Framed Shower Screen
- Tiled Shower base
- Polished edge Mirror to full width of Vanity
- Mixer Tap
- Single Towel Rail
- Privacy Lock

## WC / POWDER ROOM

- Toilet Suite
- Toilet Roll Holder
- Privacy Lock

## ENSUITE

- Vanity Basin
- 20mm Caesarstone Benchtops with 20mm Square Edge
- Laminate Base Cabinets
- Semi-Framed Shower Screen
- Tiled Shower base
- Polished edge Mirror to full width of Vanity
- Mixer Tap
- Single Towel Rail
- Toilet Suite
- Toilet Roll Holder
- Privacy Lock

## LAUNDRY

- Laundry Trough and Cabinet
- Mixer Tap
- Tiles to Splashback





Shower straight arm



Bath outlet



Laundry mixer tap



Shower mixer tap



Acrylic Bath



Laundry trough and cabinet



Single towel rail



Basin mixer tap



Toilet roll holder



Semi-framed shower screen



Vanity basin



Toilet Suite



# INTERNAL



## HEATING / COOLING

- Gas Ducted Heating **9**
- 1No. Split System Air Conditioner to main Living area on a Single Storey
- 1No. Split System Air Conditioner to main Living area and 1No. to Master Bedroom on a Double Storey (2No. Total)

## ELECTRICAL

- Double Power Points throughout **10**
- LED Downlights throughout **11**
- Single weatherproof LED Flood Light with Sensor outside Laundry
- Hardwired Smoke Detectors with battery backup
- 2No. TV /Points **12**
- 1No. TV Antenna (estate specific)
- 2No. Phone Points

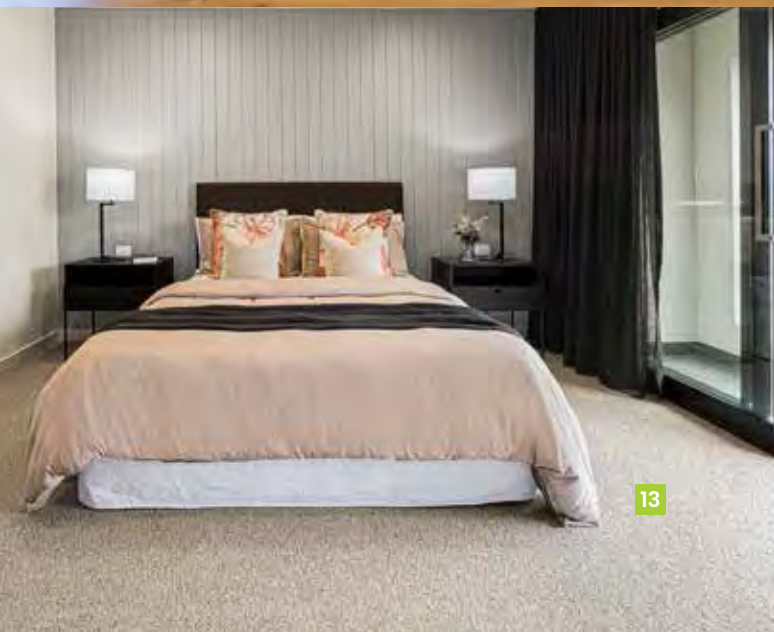
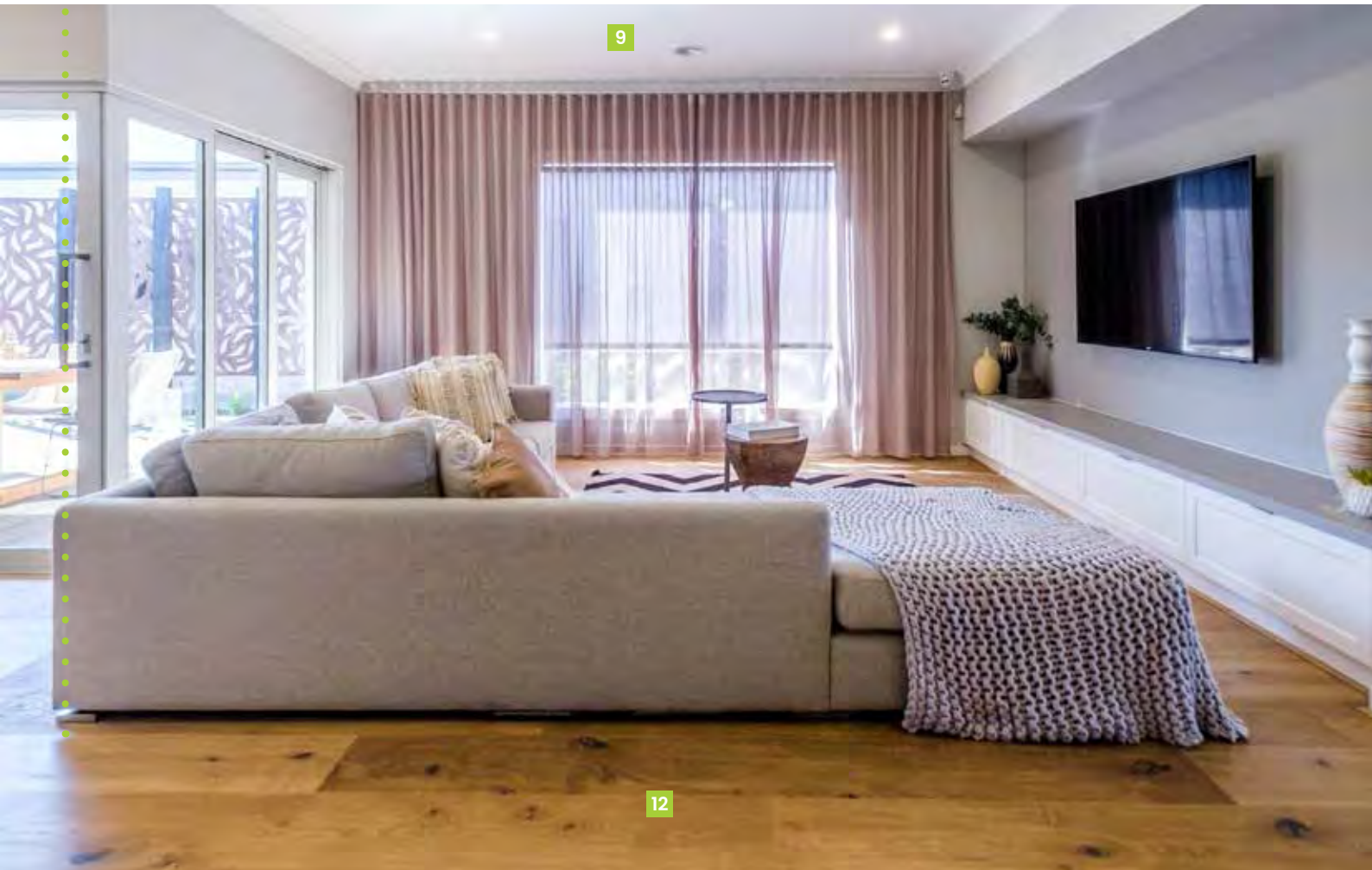
## ENERGY EFFICIENCY

- 6 Star Energy Rating
- Solar Hot Water Service with Gas Booster
- Insulation to Walls and Ceilings
- Self-sealing Exhaust Fans Positioned above all Showers
- External venting to all exhaust fans and rangehoods

## LANDSCAPING

- Combination of Turf, Plants, Mulch and Toppings to Front and Rear Yards
- Irrigation Connected to Two Garden Taps with Timers
- Compacted Paths around Perimeter of House
- Timber Fencing, including Wing Fence and Gate, to all Boundaries
- Nature Strips Levelled and Seeded
- Clothesline

# SURFACES AND FINISHES



## FLOOR COVERINGS

- Tiles to Wet Areas, Timber laminate to Entry and Living areas connected to the Kitchen (as per standard house plan) **12**
- Carpet to remainder of House (as per standard house plan) **13**

## GENERAL

- Fixed Price Contract
- All Permits as Required by Building Regulations
- Survey and Drafting Plans
- Design Guidelines Fixed
- Engineer Designed Slab/Foundations
- All Service Connections (excluding consumer account opening and fibre optic connection if applicable)
- Independent Quality Inspections
- Full House Clean on Completion
- 3 Month Maintenance period
- Home Owners Warranty
- 10 Year Structural Warranty

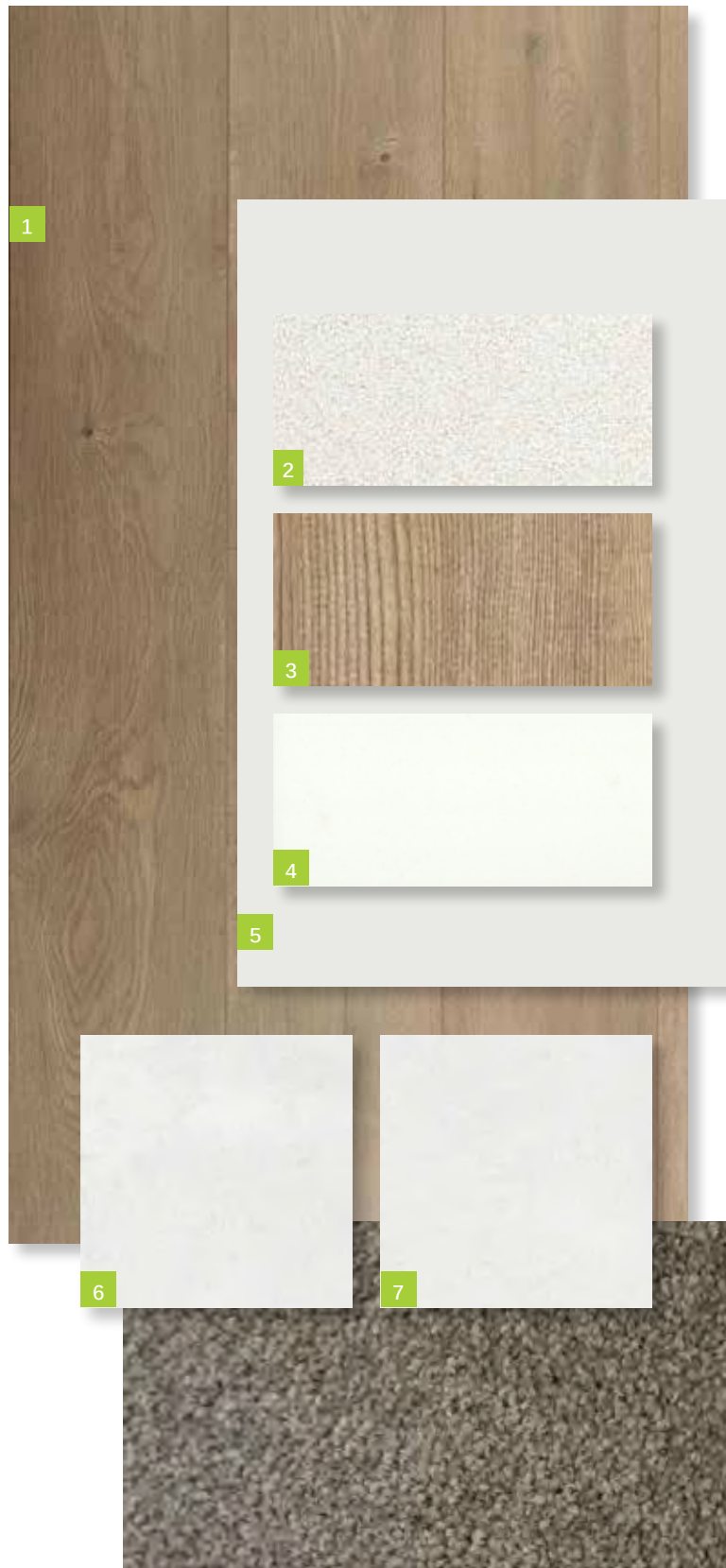


# INTERNAL COLOURS





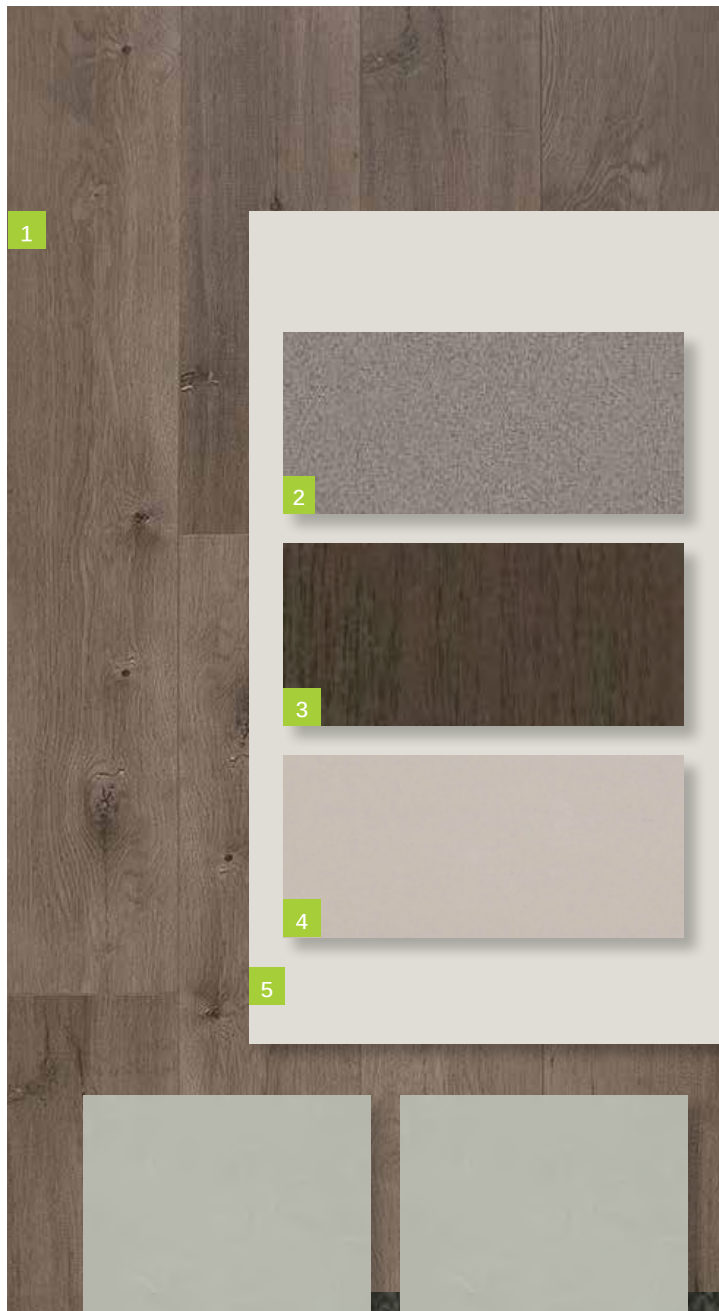
# INTERNAL COLOUR SELECTION ALPINE



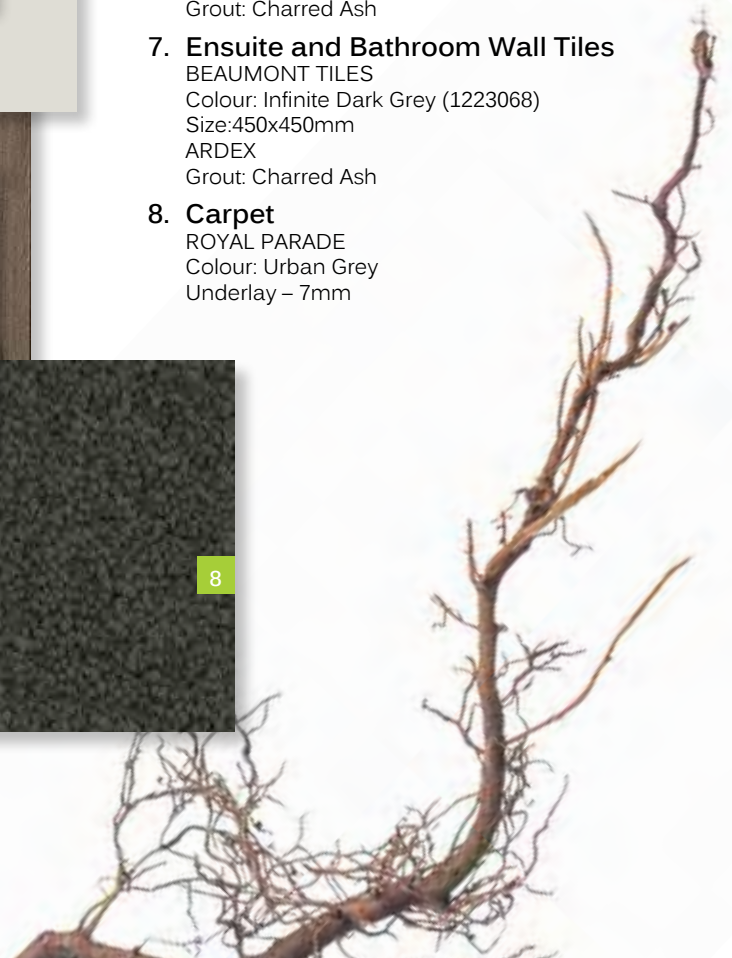
1. **Timber Laminate Floor**  
SURFACES BY HYNES  
Colour: Brooklyn – Ridgewood
2. **Benchtop**  
CAESARSTONE  
20mm Square Edge  
Colour: 3141 Osprey
3. **Overheads Cabinet**  
**Cabinet - Base (includes kicker)**  
FORMICA  
Velvet Finish  
Square Edge ABS Edging  
Colour: Mocha Firewood
4. **Splashback**  
BEAUMONT TILES  
Colour: United White Gloss (182174)  
Size: 100x300mm  
ARDEX  
Grout: White  
Laid horizontal and stacked
5. **Walls**  
WATTYL  
Colour: Feather Dawn 19.40  
Finish: Low Sheen  
**Doors / Woodwork**  
Finish: Gloss
6. **Floor Tiles:**  
**Laundry, Ensuite, Bathroom and WC (inc. shower bases)**  
BEAUMONT TILES  
Colour: Belga White (1204371)  
Size: 450x450mm  
ARDEX  
Grout: Misty Grey
7. **Ensuite and Bathroom Wall Tiles**  
BEAUMONT TILES  
Colour: Belga White (1204371)  
Size: 450x450mm  
ARDEX  
Grout: Misty Grey
8. **Carpet**  
ROYAL PARADE  
Colour: March  
Underlay – 7mm



# INTERNAL COLOUR SELECTION BASALT



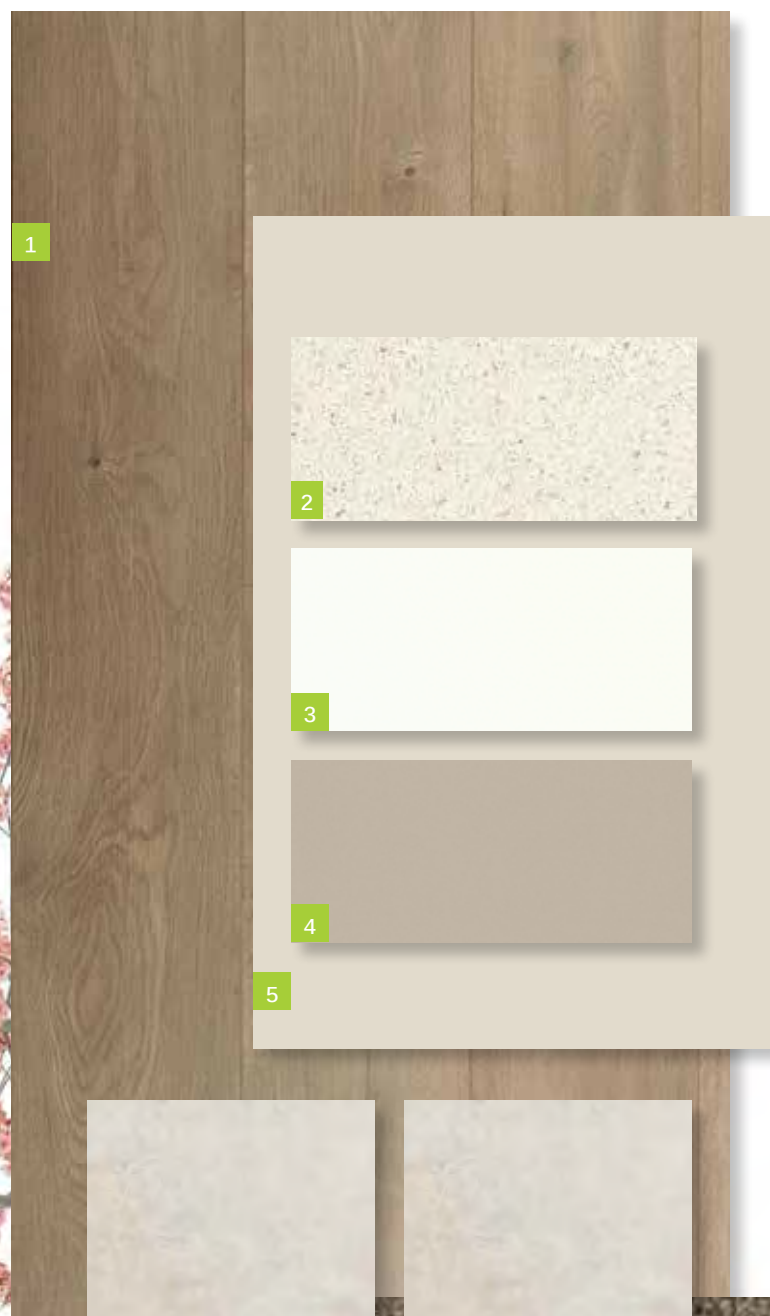
- 1. Timber Laminate Floor**  
SURFACES BY HYNES  
Colour: Brooklyn – Ridgewood
- 2. Benchtop**  
CAESARSTONE  
20mm Square Edge  
Colour: 2040 Urban
- 3. Overheads Cabinet**  
**Cabinet - Base (includes kicker)**  
FORMICA  
Velour Finish  
Square Edge ABS Edging  
Colour: Bodega Oak 1009
- 4. Splashback**  
BEAUMONT TILES  
Colour: United Pumice Gloss (1006457)  
Size: 100x300mm  
ARDEX  
Grout: Misty Grey  
Laid horizontal and stacked
- 5. Walls**  
WATTYL  
Colour: Floral White ½ strength  
Finish: Low Sheen  
**Doors / Woodwork**  
Finish: Gloss
- 6. Floor Tiles:**  
**Laundry, Ensuite, Bathroom and WC (inc. shower bases)**  
BEAUMONT TILES  
Colour: Infinite Dark Grey (1223068)  
Size: 450x450mm  
ARDEX  
Grout: Charred Ash
- 7. Ensuite and Bathroom Wall Tiles**  
BEAUMONT TILES  
Colour: Infinite Dark Grey (1223068)  
Size: 450x450mm  
ARDEX  
Grout: Charred Ash
- 8. Carpet**  
ROYAL PARADE  
Colour: Urban Grey  
Underlay – 7mm







# INTERNAL COLOUR SELECTION IVORY



1. **Timber Laminate Floor**  
SURFACES BY HYNES  
Colour: Brooklyn – Ridgewood
2. **Benchtop**  
CAESARSTONE  
20mm Square Edge  
Colour: 6141 Ocean Foam
3. **Overheads Cabinet**  
**Cabinet - Base (includes kicker)**  
FORMICA  
WAW Velour Finish  
Square Edge ABS Edging  
Colour: Warm White
4. **Splashback**  
BEAUMONT TILES  
Colour: United Ash Latte Gloss (182055)  
Size: 100x300mm  
ARDEX  
Grout: Travertine  
Laid horizontal and stacked
5. **Walls**  
WATTYL  
Colour: Grand Piano 1/4 A204  
Finish: Low Sheen  
**Doors / Woodwork**  
Finish: Gloss
6. **Floor Tiles:**  
**Laundry, Ensuite, Bathroom and WC (inc. shower bases)**  
BEAUMONT TILES  
Colour: Belga Ivory (79934)  
Size: 450x450mm  
ARDEX  
Grout: Misty Grey
7. **Ensuite and Bathroom Wall Tiles**  
BEAUMONT TILES  
Colour: Belga Ivory (79934))  
Size: 450x450mm  
ARDEX  
Grout: Misty Grey
8. **Carpet**  
ROYAL PARADE  
Colour: Hazelnut  
Underlay – 7mm

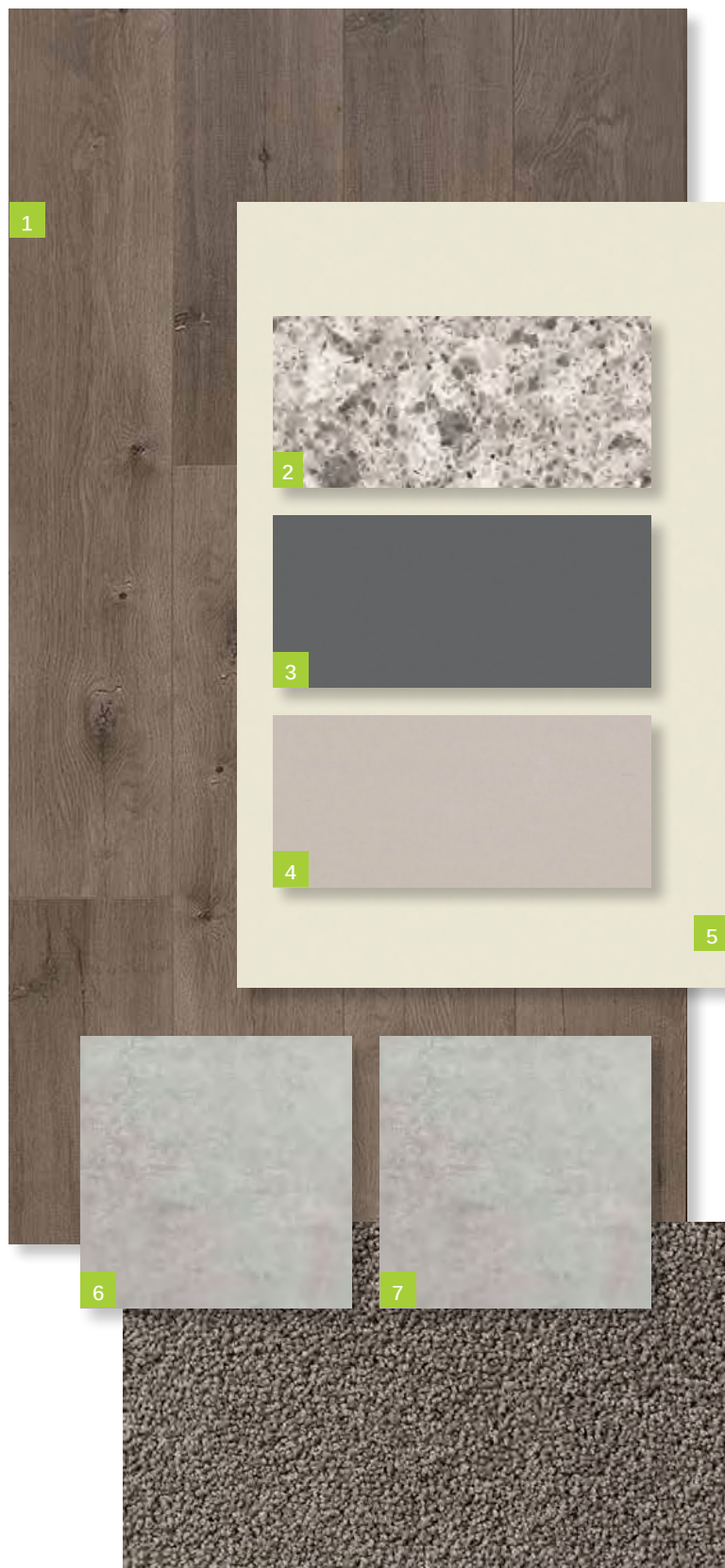


caesarstone®





# INTERNAL COLOUR SELECTION STORM



1. **Timber Laminate Floor**  
SURFACES BY HYNES  
Colour: Brooklyn - Newtown
2. **Benchtop**  
CAESARSTONE  
20mm Square Edge  
Colour: 6270 Atlantic Salt
3. **Overheads Cabinet**  
**Cabinet - Base (includes kicker)**  
FORMICA  
Velvet Finish  
Square Edge ABS Edging  
Colour: Storm S2
4. **Splashback**  
BEAUMONT TILES  
Colour: United Pumice Gloss (1006457)  
Size: 100x300mm  
ARDEX  
Grout: Misty Grey  
Laid horizontal and stacked
5. **Walls**  
WATTYL  
Colour: White Smoke T15 3.6  
Finish: Low Sheen  
**Doors / Woodwork**  
Finish: Gloss
6. **Floor Tiles:**  
**Laundry, Ensuite, Bathroom and WC (inc. shower bases)**  
BEAUMONT TILES  
Colour: Belga Grey (79931)  
Size: 450x450mm  
ARDEX  
Grout: Magellan Grey
7. **Ensuite and Bathroom Wall Tiles**  
BEAUMONT TILES  
Colour: Belga  
Size: 450x45  
ARDEX  
Grout: Magellan Grey
8. **Carpet**  
GOTHAM  
Colour: Bird  
Underlay –





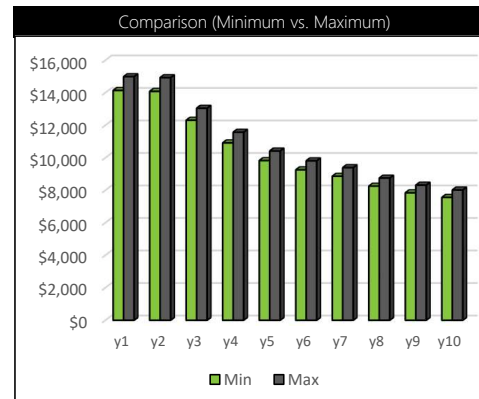
caesarstone®



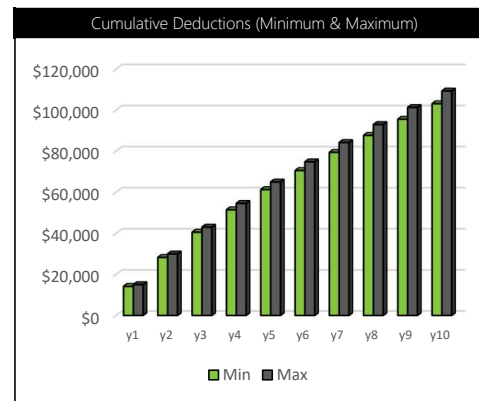
# ESTIMATE /

## Depreciation Estimate Heath 21 Design MCG Quantity Surveyors

Maximum			
Year	Division 40	Division 43	Total
1	\$8,003	\$6,986	\$14,990
2	\$7,943	\$6,986	\$14,929
3	\$6,058	\$6,986	\$13,044
4	\$4,585	\$6,986	\$11,571
5	\$3,429	\$6,986	\$10,415
6	\$2,825	\$6,986	\$9,811
7	\$2,407	\$6,986	\$9,393
8	\$1,763	\$6,986	\$8,749
9	\$1,328	\$6,986	\$8,315
10	\$1,029	\$6,986	\$8,015
Total Value	\$44,927	\$279,445	\$324,372



Minimum			
Year	Division 40	Division 43	Total
1	\$7,550	\$6,591	\$14,141
2	\$7,493	\$6,591	\$14,084
3	\$5,715	\$6,591	\$12,306
4	\$4,325	\$6,591	\$10,916
5	\$3,234	\$6,591	\$9,825
6	\$2,665	\$6,591	\$9,255
7	\$2,271	\$6,591	\$8,862
8	\$1,663	\$6,591	\$8,254
9	\$1,253	\$6,591	\$7,844
10	\$971	\$6,591	\$7,561
Total Value	\$42,384	\$263,624	\$306,008



This estimate is presented as a guide to the potential depreciation deductions only and should not be applied or acted upon. The depreciation of the plant and equipment items is based on the Diminishing Value method of depreciation applying Low-Value Pooling and 100% deductions. The Division 43 Capital Allowance is calculated at 2.5% p.a. of the estimated construction cost. The estimate is based upon legislation current as at the date of report production.

**THIS ESTIMATE CANNOT BE USED FOR TAXATION PURPOSES.**

