

SALES SUITE

2

1

COMMUNITY
FACILITIES

GOVERNMENT
SCHOOL

KINDER

TOWN
CENTRE

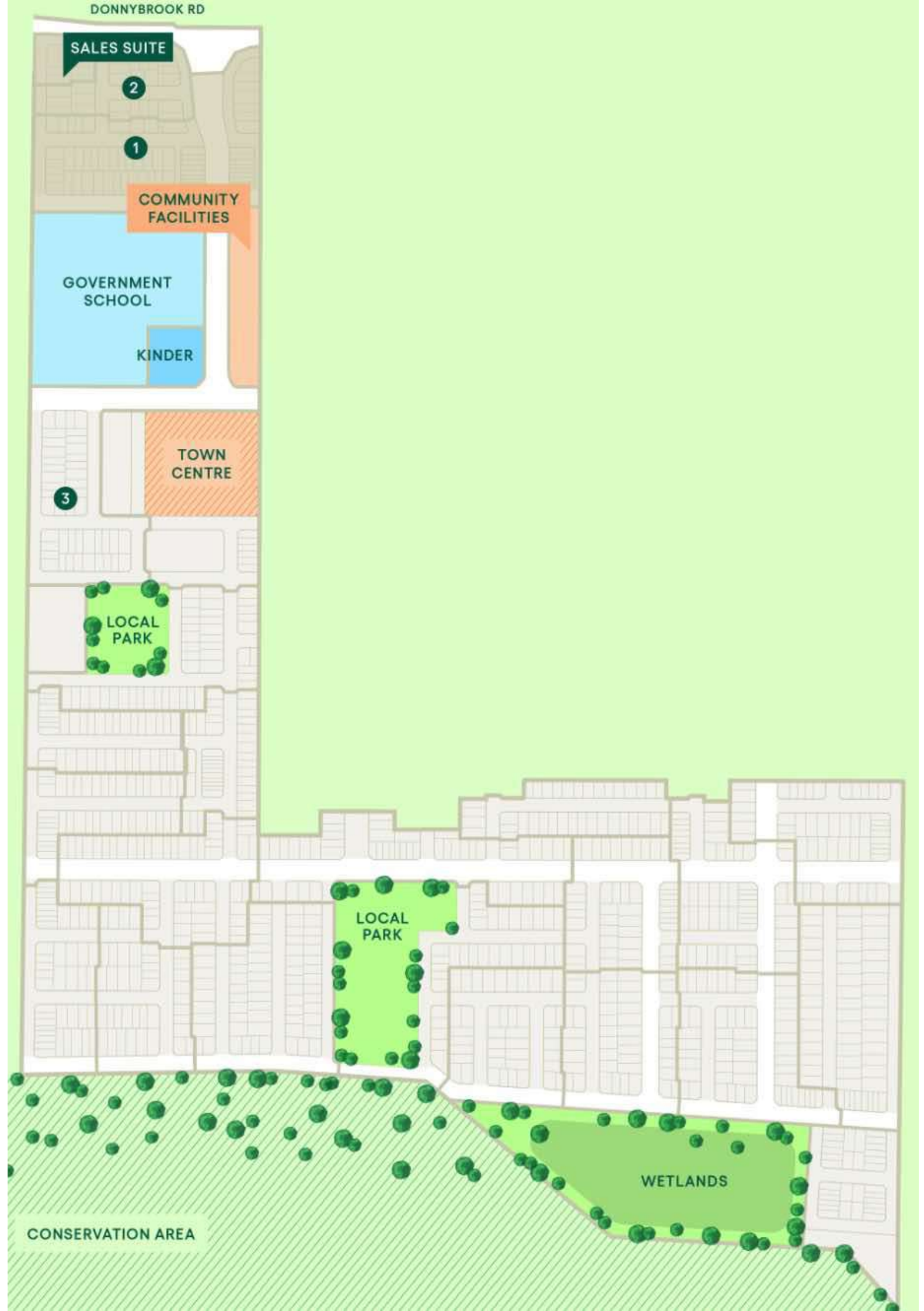
3

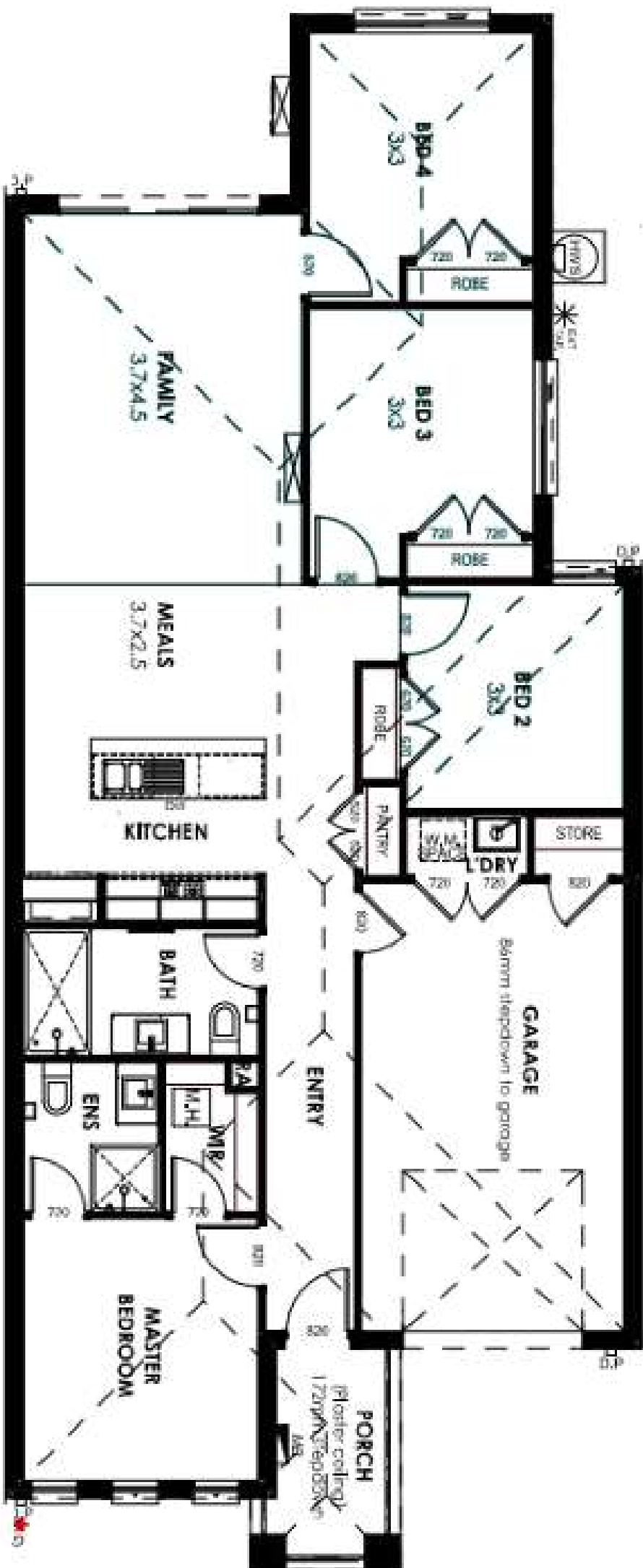
LOCAL
PARK

LOCAL
PARK

WETLANDS

CONSERVATION AREA

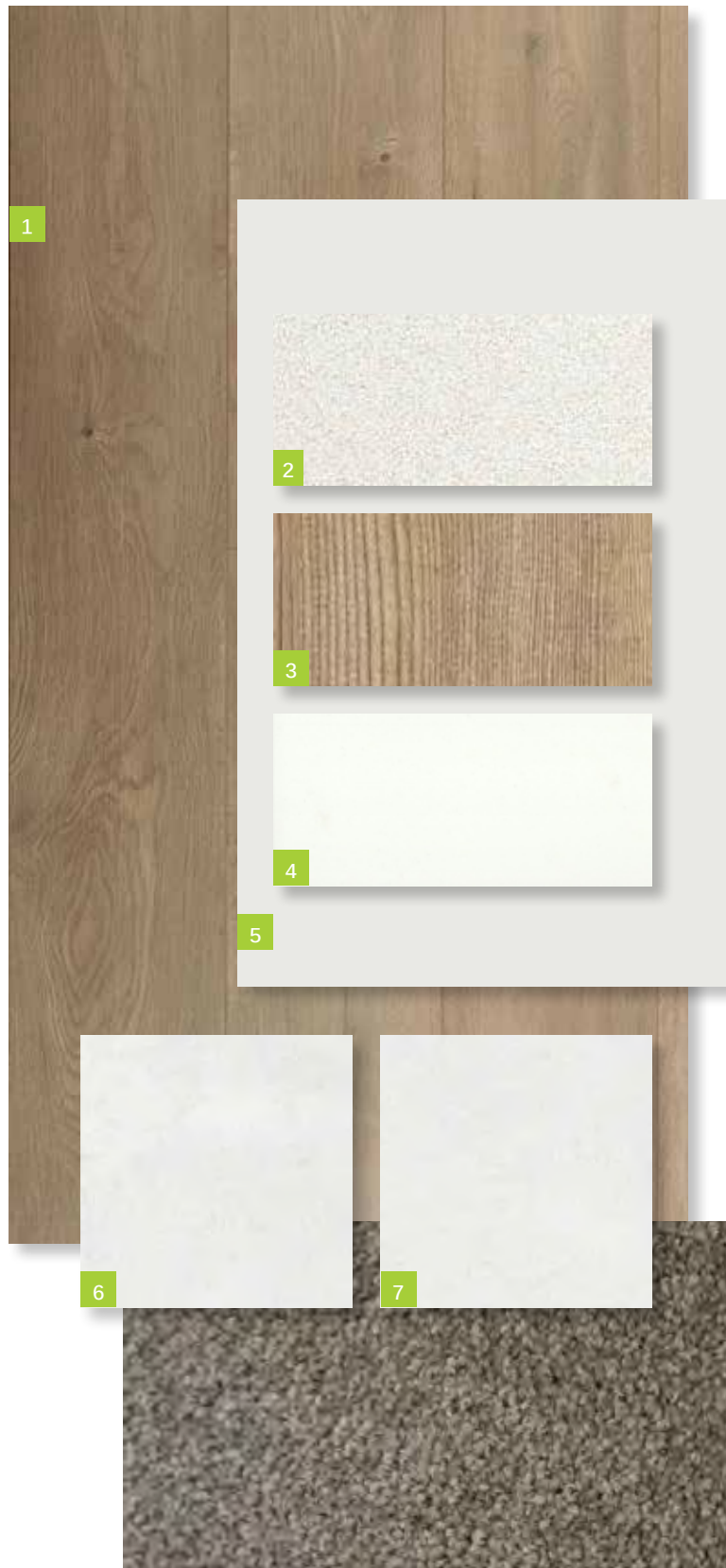




INTERNAL COLOURS



INTERNAL COLOUR SELECTION ALPINE

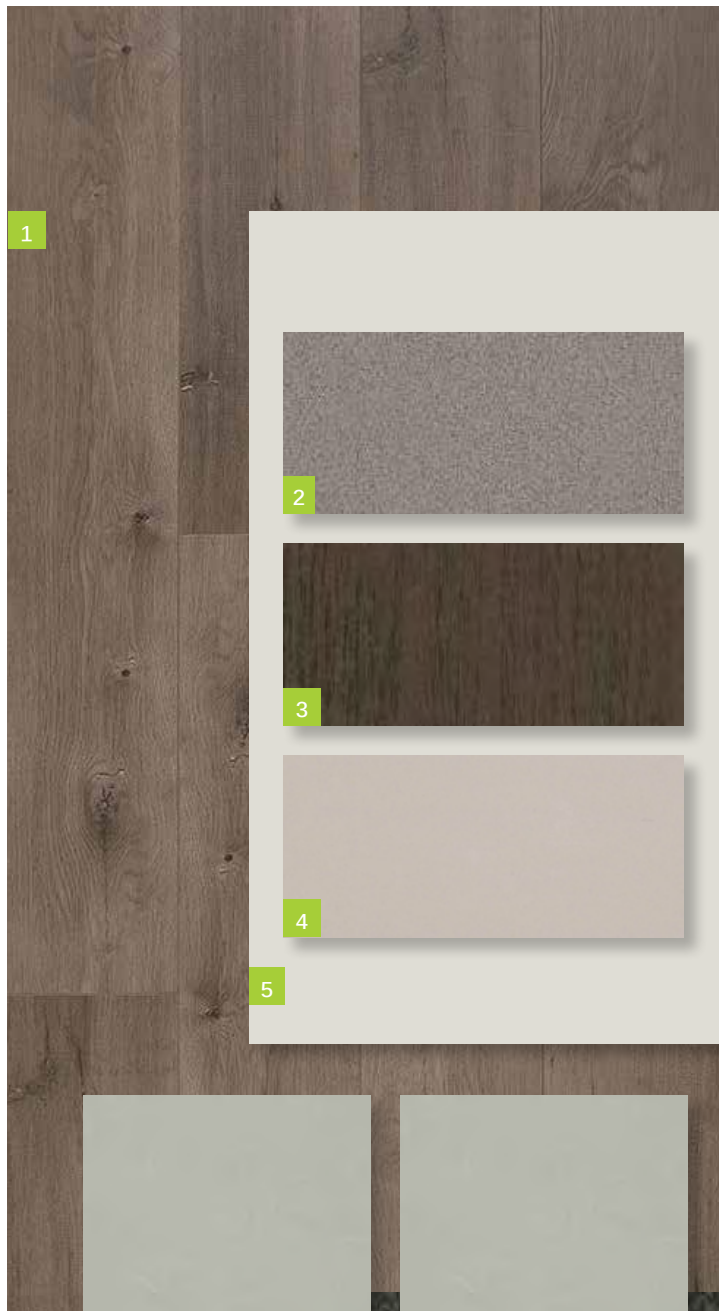


1. **Timber Laminate Floor**
SURFACES BY HYNES
Colour: Brooklyn – Ridgewood
2. **Benchtop**
CAESARSTONE
20mm Square Edge
Colour: 3141 Osprey
3. **Overheads Cabinet**
Cabinet - Base (includes kicker)
FORMICA
Velvet Finish
Square Edge ABS Edging
Colour: Mocha Firewood
4. **Splashback**
BEAUMONT TILES
Colour: United White Gloss (182174)
Size: 100x300mm
ARDEX
Grout: White
Laid horizontal and stacked
5. **Walls**
WATTYL
Colour: Feather Dawn 19.40
Finish: Low Sheen
Doors / Woodwork
Finish: Gloss
6. **Floor Tiles:**
Laundry, Ensuite, Bathroom and WC (inc. shower bases)
BEAUMONT TILES
Colour: Belga White (1204371)
Size: 450x450mm
ARDEX
Grout: Misty Grey
7. **Ensuite and Bathroom Wall Tiles**
BEAUMONT TILES
Colour: Belga White (1204371)
Size: 450x450mm
ARDEX
Grout: Misty Grey
8. **Carpet**
ROYAL PARADE
Colour: March
Underlay – 7mm

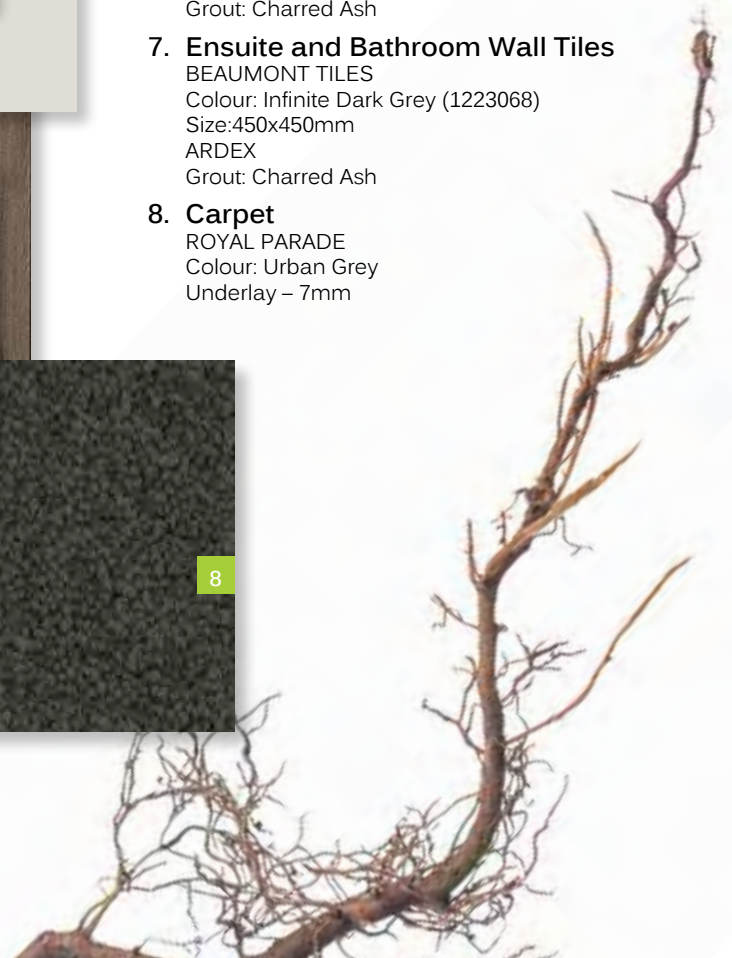




INTERNAL COLOUR SELECTION BASALT

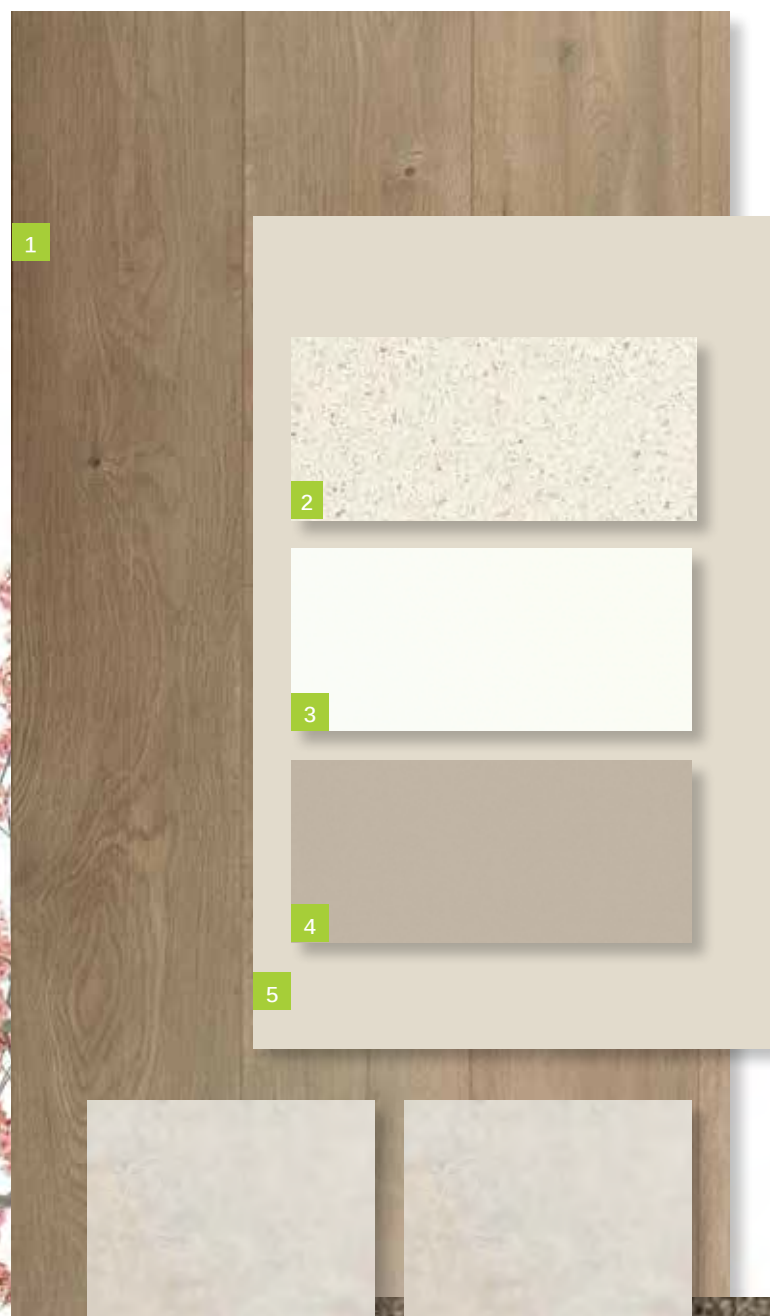


- 1. Timber Laminate Floor**
SURFACES BY HYNES
Colour: Brooklyn – Ridgewood
- 2. Benchtop**
CAESARSTONE
20mm Square Edge
Colour: 2040 Urban
- 3. Overheads Cabinet**
Cabinet - Base (includes kicker)
FORMICA
Velour Finish
Square Edge ABS Edging
Colour: Bodega Oak 1009
- 4. Splashback**
BEAUMONT TILES
Colour: United Pumice Gloss (1006457)
Size: 100x300mm
ARDEX
Grout: Misty Grey
Laid horizontal and stacked
- 5. Walls**
WATTYL
Colour: Floral White ½ strength
Finish: Low Sheen
Doors / Woodwork
Finish: Gloss
- 6. Floor Tiles:**
Laundry, Ensuite, Bathroom and WC (inc. shower bases)
BEAUMONT TILES
Colour: Infinite Dark Grey (1223068)
Size: 450x450mm
ARDEX
Grout: Charred Ash
- 7. Ensuite and Bathroom Wall Tiles**
BEAUMONT TILES
Colour: Infinite Dark Grey (1223068)
Size: 450x450mm
ARDEX
Grout: Charred Ash
- 8. Carpet**
ROYAL PARADE
Colour: Urban Grey
Underlay – 7mm





INTERNAL COLOUR SELECTION IVORY



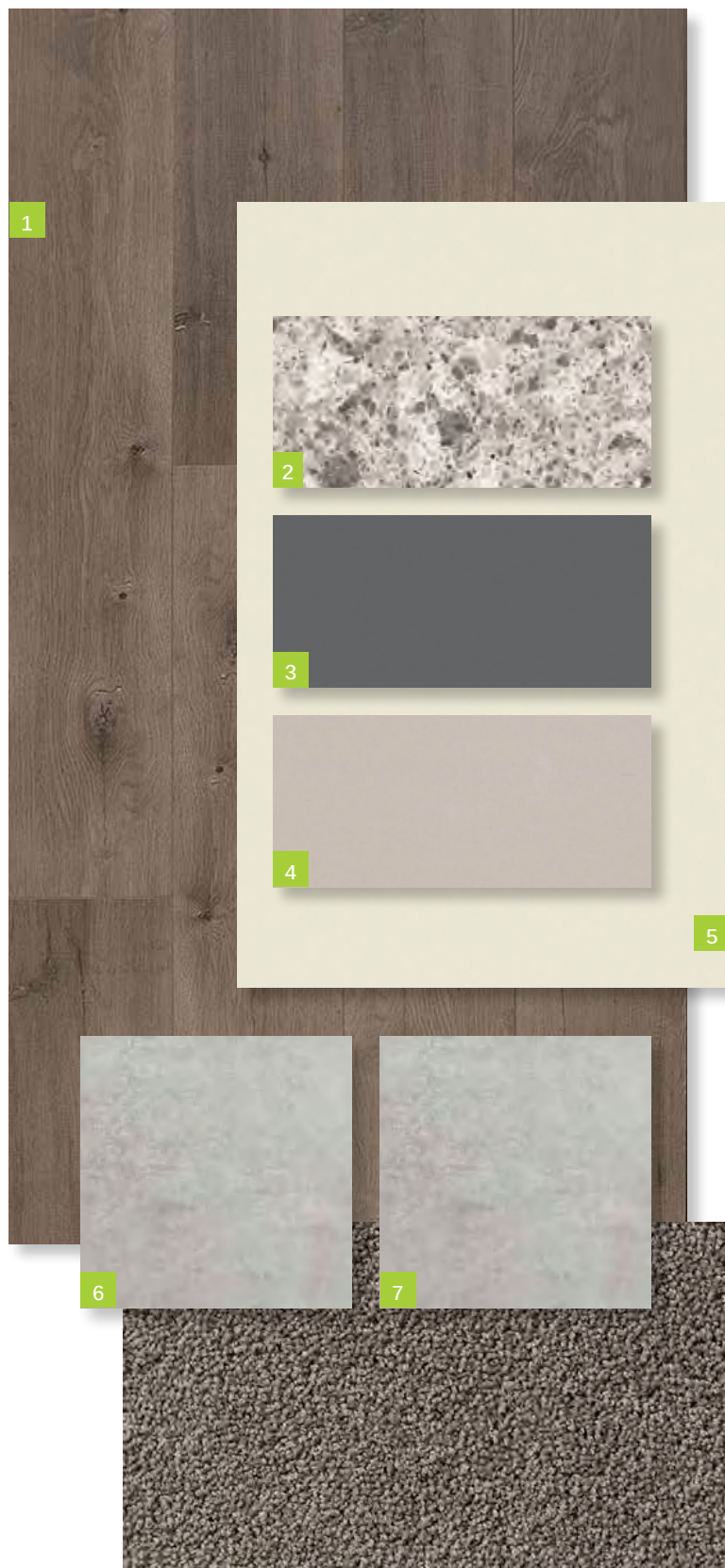
1. **Timber Laminate Floor**
SURFACES BY HYNES
Colour: Brooklyn – Ridgewood
2. **Benchtop**
CAESARSTONE
20mm Square Edge
Colour: 6141 Ocean Foam
3. **Overheads Cabinet**
Cabinet - Base (includes kicker)
FORMICA
WAW Velour Finish
Square Edge ABS Edging
Colour: Warm White
4. **Splashback**
BEAUMONT TILES
Colour: United Ash Latte Gloss (182055)
Size: 100x300mm
ARDEX
Grout: Travertine
Laid horizontal and stacked
5. **Walls**
WATTYL
Colour: Grand Piano 1/4 A204
Finish: Low Sheen
Doors / Woodwork
Finish: Gloss
6. **Floor Tiles:**
Laundry, Ensuite, Bathroom and WC (inc. shower bases)
BEAUMONT TILES
Colour: Belga Ivory (79934)
Size: 450x450mm
ARDEX
Grout: Misty Grey
7. **Ensuite and Bathroom Wall Tiles**
BEAUMONT TILES
Colour: Belga Ivory (79934))
Size: 450x450mm
ARDEX
Grout: Misty Grey
8. **Carpet**
ROYAL PARADE
Colour: Hazelnut
Underlay – 7mm



caesarstone®



INTERNAL COLOUR SELECTION STORM



1. **Timber Laminate Floor**
SURFACES BY HYNES
Colour: Brooklyn - Newtown
2. **Benchtop**
CAESARSTONE
20mm Square Edge
Colour: 6270 Atlantic Salt
3. **Overheads Cabinet**
Cabinet - Base (includes kicker)
FORMICA
Velvet Finish
Square Edge ABS Edging
Colour: Storm S2
4. **Splashback**
BEAUMONT TILES
Colour: United Pumice Gloss (1006457)
Size: 100x300mm
ARDEX
Grout: Misty Grey
Laid horizontal and stacked
5. **Walls**
WATTYL
Colour: White Smoke T15 3.6
Finish: Low Sheen
Doors / Woodwork
Finish: Gloss
6. **Floor Tiles:**
Laundry, Ensuite, Bathroom and WC (inc. shower bases)
BEAUMONT TILES
Colour: Belga Grey (79931)
Size: 450x450mm
ARDEX
Grout: Magellan Grey
7. **Ensuite and Bathroom Wall Tiles**
BEAUMONT TILES
Colour: Belga Grey (79931)
Size: 450x450mm
ARDEX
Grout: Magellan Grey
8. **Carpet**
GOTHAM
Colour: Bird Underlay –





caesarstone®



INCLUSIONS





EXTERNAL

SITE COSTS

- Fixed Price Site Costs including Rock Excavation

EXTERNAL ITEMS

- Concrete Roof Tiles as per colour document **1**
- Colorbond Fascia, Gutter and Downpipes **2**
- Bricks as per colour document **3**
- Natural colour Mortar with Rolled joints
- Brickwork above Windows to front Facade only
- Painted Infills above Garage Door and all Windows and Doors to sides and rear
- Plaster Ceiling to Porch and Outdoor Living (if applicable)
- Two part Termite Treatment
- Colour Through Concrete Driveway and Path to Porch **4**
- Letterbox (with numbers)

GARAGE

- Colorbond Sectional Panelift Garage Door with Motor and 2No. Remote Controls **5**
- Weatherproof Door to Rear of Garage (plan specific)
- Flush Panel Garage/House Access Door (plan specific)
- Concrete Floor

DOORS - EXTERNAL

- Feature 2040mm high x 820mm wide Front Entry Door with Clear Glazing
- Double Cylinder Deadbolt to Front Entry
- Entrance set to all external Hinged Doors and Garage/House Access Door (plan specific)



Natural colour mortar with rolled joints



2040mm high x 820mm wide front entry door and entrance set



KITCHEN



- 900mm Stainless Steel Upright Cooker and Canopy Rangehood
- Stainless Steel Dishwasher
- 20mm Caesarstone Benchtops with 20mm Square Edge
- Laminate Base Cabinets
- Laminate Overhead Cabinets with Bulkhead above
- Stainless Steel Double Bowl Sink
- Mixer Tap
- Tiled Splashback
- 4No. Melamine Shelves to Pantry



Cabinet handles

Domain
Quality Appliances for Everyday Living



Stainless Steel Dishwasher



900mm Stainless Steel Upright Cooker



900mm Stainless Steel Canopy Rangehood



Mixer Tap



Stainless Steel Double Bowl Sink



20mm Caesarstone Benchtops with 20mm Square Edge



INTERNAL

INTERNAL ITEMS

- Engineered waffle Slab
- Pine Wall Frames and Roof Trusses
- 2590mm Ceiling height to Single Storey **6**
- 2590mm Ceiling height to Ground Floor and 2440mm to First Floor of a Double Storey
- Plasterboard Walls, Ceilings and Cornice
- 67mm Single Bevel Architrave and Skirting
- 75mm Scotia Cornice
- 1No. Melamine shelf with 1No. Hanging Rail to Bedroom Robes

DOORS - INTERNAL

- 2040mm high Flush Panel Doors throughout **7**
- Lever Door Handles

WINDOWS

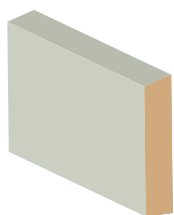
- Obscure Glazing to Ensuite, Bathroom and WC
- Aluminium Sliding Windows (unless otherwise nominated)
- Window Locks to all openable Windows (keyed alike)
- Venetians to Front Windows, Roller Blinds to remaining Clear Glazed Windows (excluding stairwell) and Sliding Doors

PAINTING

- 3No. Coat Paint system throughout **8**
- Gloss Enamel Paint to Architrave and Skirting

FLYSCREEN / SECURITY DOORS

- Flyscreens to all openable Windows
- Barrier Doors to all Sliding Doors



67mm single bevel architrave and skirting



Internal lever door handles



75mm scotia cornice



BATHROOM

BATHROOM

- Vanity Basin
- Acrylic Bath
- 20mm Caesarstone Benchtops with 20mm Square Edge
- Laminate Base Cabinets
- Semi-Framed Shower Screen
- Tiled Shower base
- Polished edge Mirror to full width of Vanity
- Mixer Tap
- Single Towel Rail
- Privacy Lock

WC / POWDER ROOM

- Toilet Suite
- Toilet Roll Holder
- Privacy Lock

ENSUITE

- Vanity Basin
- 20mm Caesarstone Benchtops with 20mm Square Edge
- Laminate Base Cabinets
- Semi-Framed Shower Screen
- Tiled Shower base
- Polished edge Mirror to full width of Vanity
- Mixer Tap
- Single Towel Rail
- Toilet Suite
- Toilet Roll Holder
- Privacy Lock

LAUNDRY

- Laundry Trough and Cabinet
- Mixer Tap
- Tiles to Splashback





Shower straight arm



Bath outlet



Laundry mixer tap



Shower mixer tap



Acrylic Bath



Laundry trough and cabinet



Single towel rail



Basin mixer tap



Toilet roll holder



Semi-framed shower screen



Vanity basin



Toilet Suite

INTERNAL



HEATING / COOLING

- Gas Ducted Heating **9**
- 1No. Split System Air Conditioner to main Living area on a Single Storey
- 1No. Split System Air Conditioner to main Living area and 1No. to Master Bedroom on a Double Storey (2No. Total)

ELECTRICAL

- Double Power Points throughout **10**
- LED Downlights throughout **11**
- Single weatherproof LED Flood Light with Sensor outside Laundry
- Hardwired Smoke Detectors with battery backup
- 2No. TV /Points **12**
- 1No. TV Antenna (estate specific)
- 2No. Phone Points

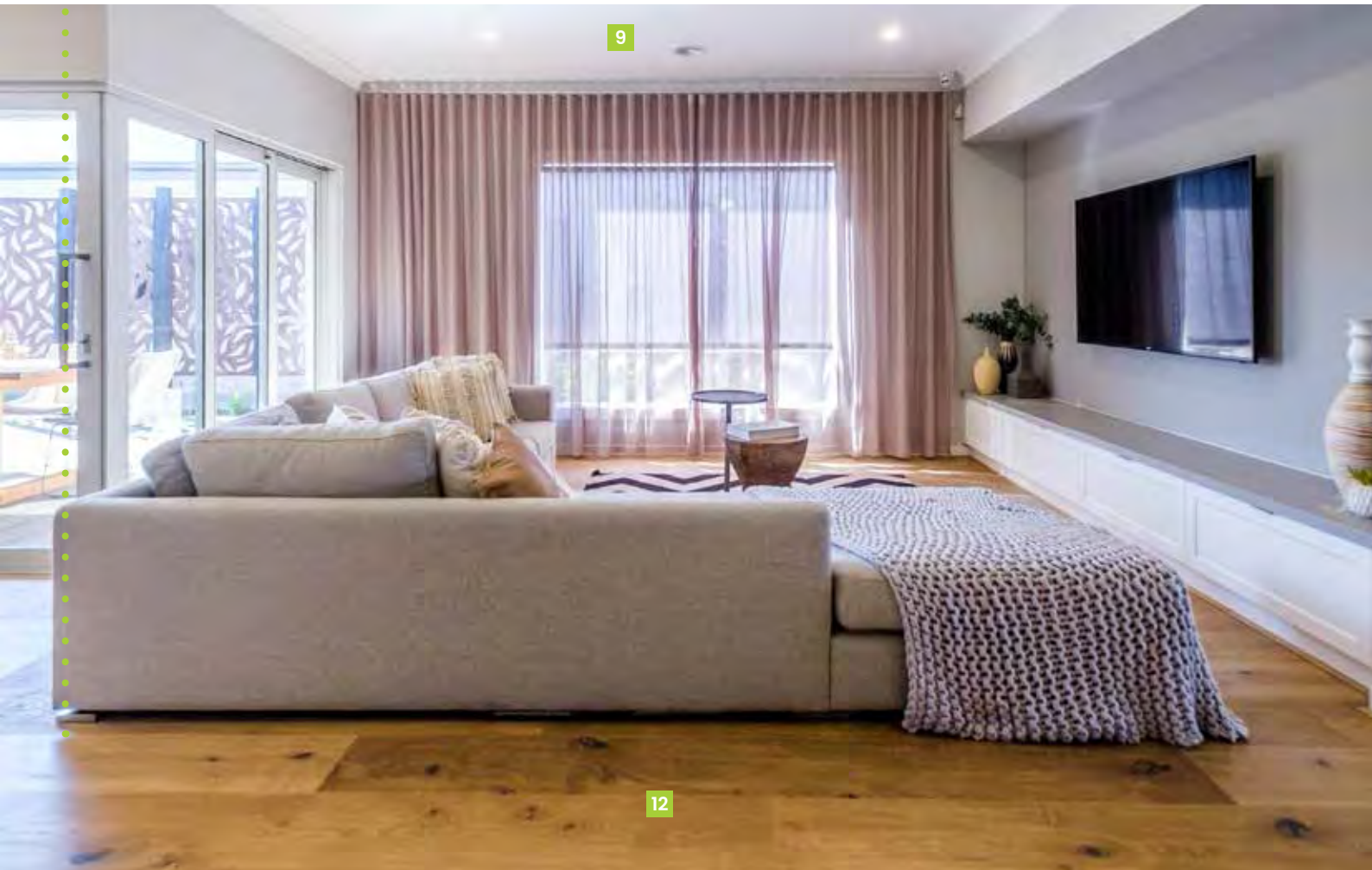
ENERGY EFFICIENCY

- 6 Star Energy Rating
- Solar Hot Water Service with Gas Booster
- Insulation to Walls and Ceilings
- Self-sealing Exhaust Fans Positioned above all Showers
- External venting to all exhaust fans and rangehoods

LANDSCAPING

- Combination of Turf, Plants, Mulch and Toppings to Front and Rear Yards
- Irrigation Connected to Two Garden Taps with Timers
- Compacted Paths around Perimeter of House
- Timber Fencing, including Wing Fence and Gate, to all Boundaries
- Nature Strips Levelled and Seeded
- Clothesline

SURFACES AND FINISHES



FLOOR COVERINGS

- Tiles to Wet Areas, Timber laminate to Entry and Living areas connected to the Kitchen (as per standard house plan) **12**
- Carpet to remainder of House (as per standard house plan) **13**

GENERAL

- Fixed Price Contract
- All Permits as Required by Building Regulations
- Survey and Drafting Plans
- Design Guidelines Fixed
- Engineer Designed Slab/Foundations
- All Service Connections (excluding consumer account opening and fibre optic connection if applicable)
- Independent Quality Inspections
- Full House Clean on Completion
- 3 Month Maintenance period
- Home Owners Warranty
- 10 Year Structural Warranty