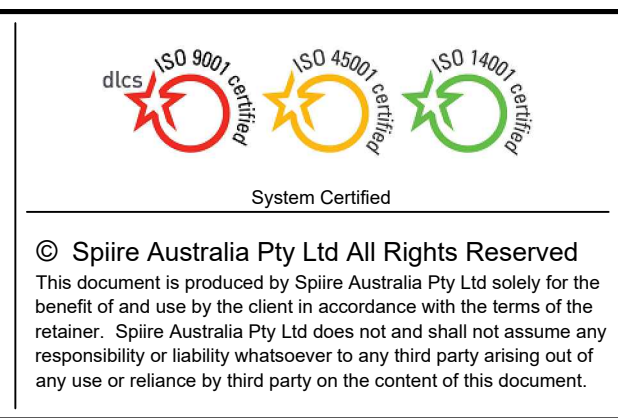
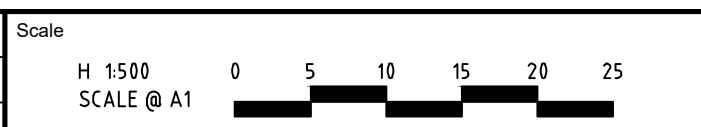


file name: 309785CR200.dwg, layout name: CR200, created by: M.H. Wright, file location: G:\309785\309785.dwg, ACAD plot date: 11/03/2022 12:27 PM, Sheet 2 of 12 Sheets

WARNING
BEWARE OF UNDERGROUND/OVERHEAD SERVICES
THE LOCATION OF SERVICES ARE APPROXIMATE ONLY AND THEIR EXACT POSITION SHOULD BE PROVEN ON SITE. NO GUARANTEE IS GIVEN THAT ALL EXISTING SERVICES ARE SHOWN. SPECIAL CONSIDERATION SHOULD BE GIVEN TO CONSTRUCTION PROCEDURES UNDER OVERHEAD ELECTRICITY TRANSMISSION LINES.

Rev	A	PRELIMINARY ISSUE	A.W	02/03/22
		Amendments	Approved	Date



spiire

16 BRIDGE STREET BENDIGO
VICTORIA 3550 AUSTRALIA T 61 3 5448 2500
spiire.com.au ABN 55 050 029 635

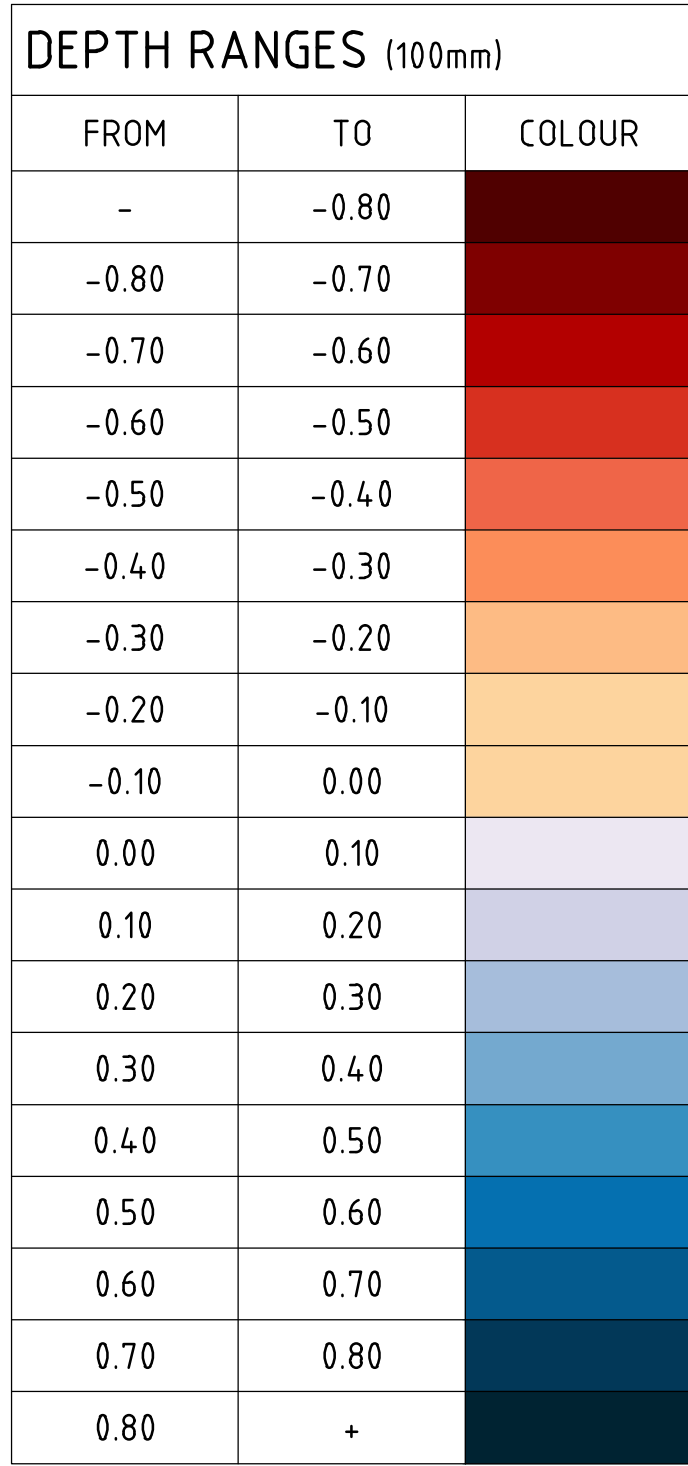
Designed
M. WRIGHT
Authorised
A. WILKIE

Checked
B. IBBS
Date
02/03/22

**CONROY'S GREEN
STAGE 8
ROAD AND DRAINAGE
ROAD LAYOUT PLANS - FACE PLAN
CITY OF BALLARAT
SAN HUBERTO PROPERTIES P/L**

PRELIMINARY Drg No 309785CR200 Rev **A**

file name: 309785CR201.dwg, layout name: CR201, plotted by: Mitchell Wright
file location: G:\309785\309785.dwg, ALAD plot date: 11/03/2022 12:21 PM, Sheet 3 of 12 Sheets



NOTE: DOES NOT INCLUDE FILLING
OF EXISTING OPEN DRAINS

TBM LOCATIONS				
Point Number	Easting	Northing	RL	D
1	745587.066	58374.15.818	430.531	STAR PICKET
2	745719.945	5837382.065	433.221	STAR PICKET
3	745775.088	5837309.608	434.760	STAR PICKET

WARNING
BEWARE OF UNDERGROUND/OVERHEAD SERVICES
THE LOCATION OF SERVICES ARE APPROXIMATE ONLY AND THEIR EXACT POSITION SHOULD BE PROVEN ON SITE. NO GUARANTEE IS GIVEN THAT ALL EXISTING SERVICES ARE SHOWN. SPECIAL CONSIDERATION SHOULD BE GIVEN TO CONSTRUCTION PROCEDURES UNDER OVERHEAD ELECTRICITY TRANSMISSION LINES.



© Spiire Australia Pty Ltd All Rights Reserved
This document is produced by Spiire Australia Pty Ltd solely for the benefit of and use by the client in accordance with the terms of the retainer. Spiire Australia Pty Ltd does not and shall not assume any responsibility or liability whatsoever to any third party arising out of any use or reliance by third party on the content of this document.

spiire

16 BRIDGE STREET BENDIGO
VICTORIA 3550 AUSTRALIA T 61 3 5448 2500
spiire.com.au ABN 55 050 029 635

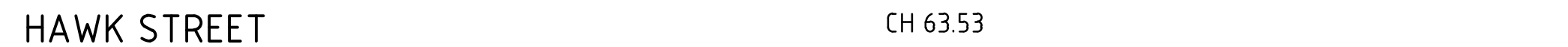
Designed
M. WRIGHT
Authorised
A. WILKIE

Checked
B. IBBS
Date
02/03/22

**CONROY'S GREEN
STAGE 8**
ROAD AND DRAINAGE
ROAD LAYOUT PLANS - EARTHWORKS AND TBM PLAN
CITY OF BALLARAT
SAN HUBERTO PROPERTIES P/L

PRELIMINARY Drg No **309785CR201** Rev **A**

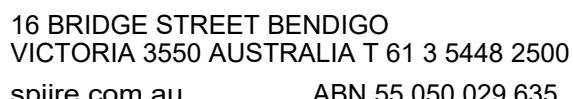
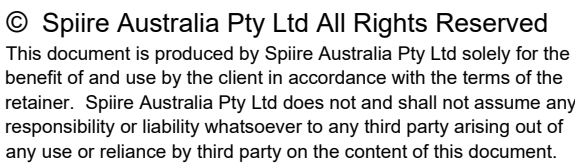
ALL FILLING WITHIN ROAD RESERVES IS TO BE UNDERTAKEN USING LEVEL 1 SUPERVISION AND BE COMPLETED IN ACCORDANCE WITH AS 3798-2007 AND TO THE SATISFACTION OF COUNCIL AND THE SUPERINTENDENT. FILL AREAS ARE TO BE STRIPPED OF TOPSOIL, FILLED AND REPLACED WITH TOPSOIL (WHERE REQUIRED) TO OBTAIN THE FINAL LEVELS SHOWN ON THE DRAWINGS.



Scale

H 1:100
SCALE @ A1
V 150

0 1 2 3 4 5
0 0.5 1 1.5 2 2.5



Designed	Checked
M. WRIGHT	B. IBBS
Authorised	Date
A. WILKIE	02/03/22

PRELIMINARY Drg No 309785CR400 Rev A

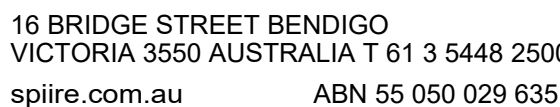
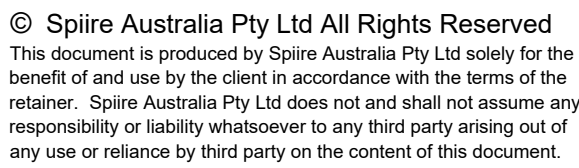
ALL FILLING WITHIN ROAD RESERVES IS TO BE UNDERTAKEN USING LEVEL 1 SUPERVISION AND BE COMPLETED IN ACCORDANCE WITH AS 3798-2007 AND TO THE SATISFACTION OF COUNCIL AND THE SUPERINTENDENT. FILL AREAS ARE TO BE STRIPPED OF TOPSOIL, FILLED AND REPLACED WITH TOPSOIL (WHERE REQUIRED) TO OBTAIN THE FINAL LEVELS SHOWN ON THE DRAWINGS.



Scale

H 1:100
SCALE @ A1
V 150

0 1 2 3 4 5
0 0.5 1 1.5 2 2.5



Designed	Checked
M. WRIGHT	B. IBBS
Authorised	Date
A. WILKIE	02/03/22

PRELIMINARY Drg No **309785CR401**

Rev
A



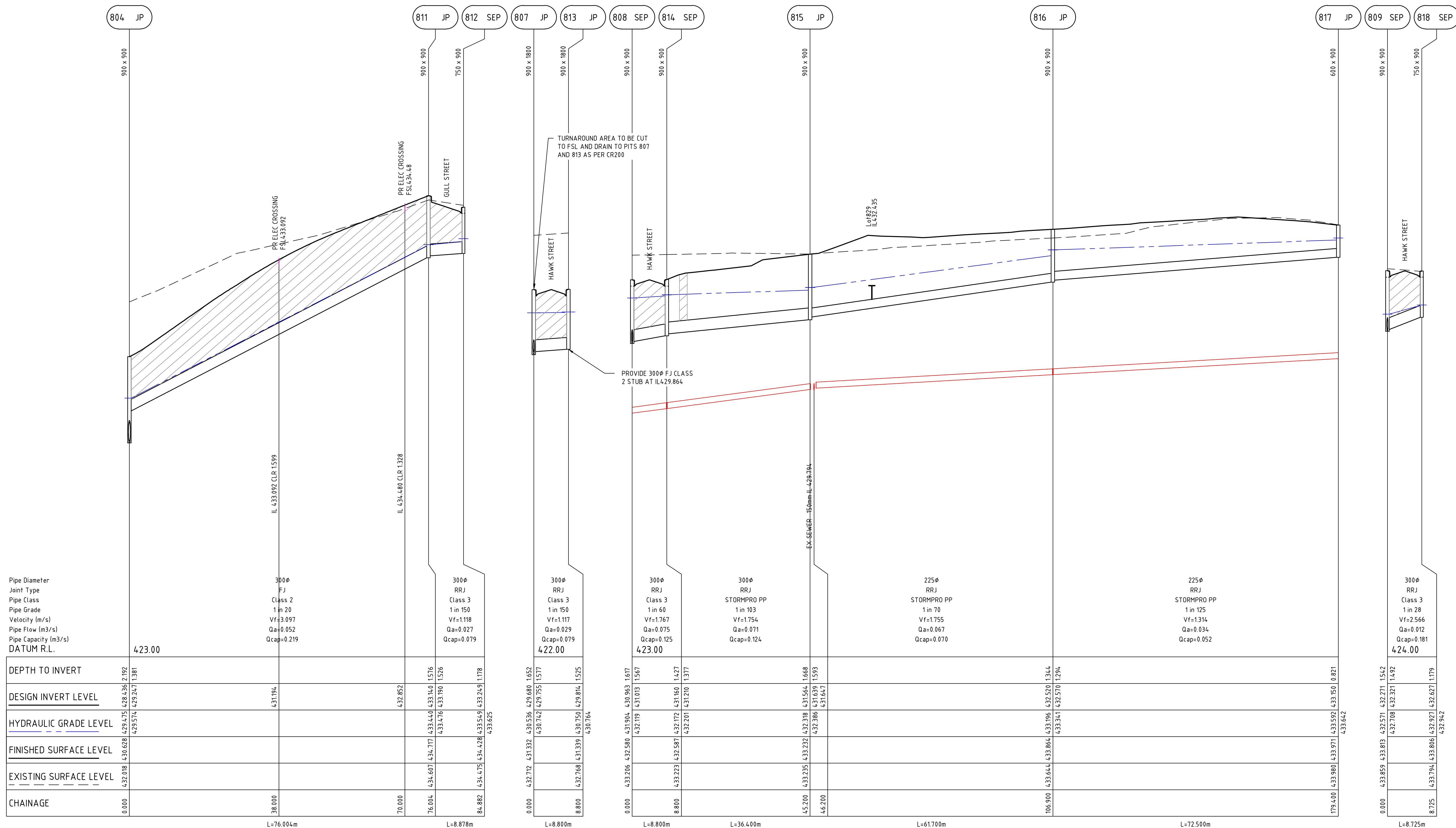
Scale

H 1500
SCALE @ A1
V 150

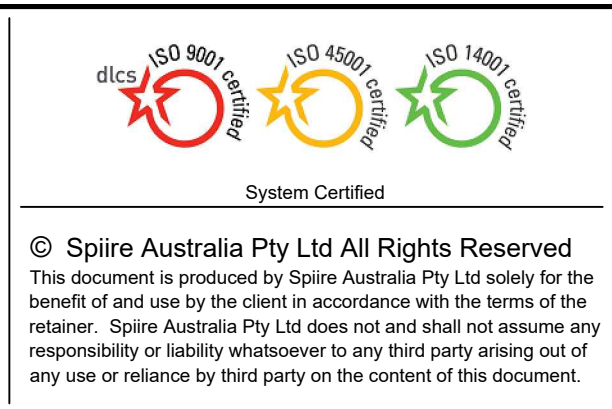
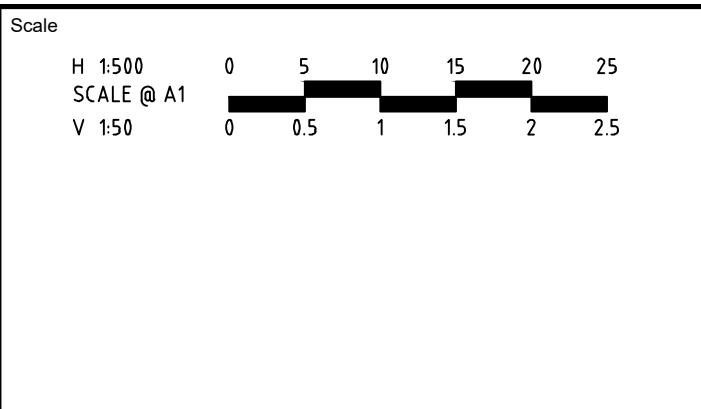
0 5 10 15 20 25

0 0.5 1 1.5 2 2.5

Rev
A



A	PRELIMINARY ISSUE	A.W	02/03/22
Rev	Amendments	Approved	Date



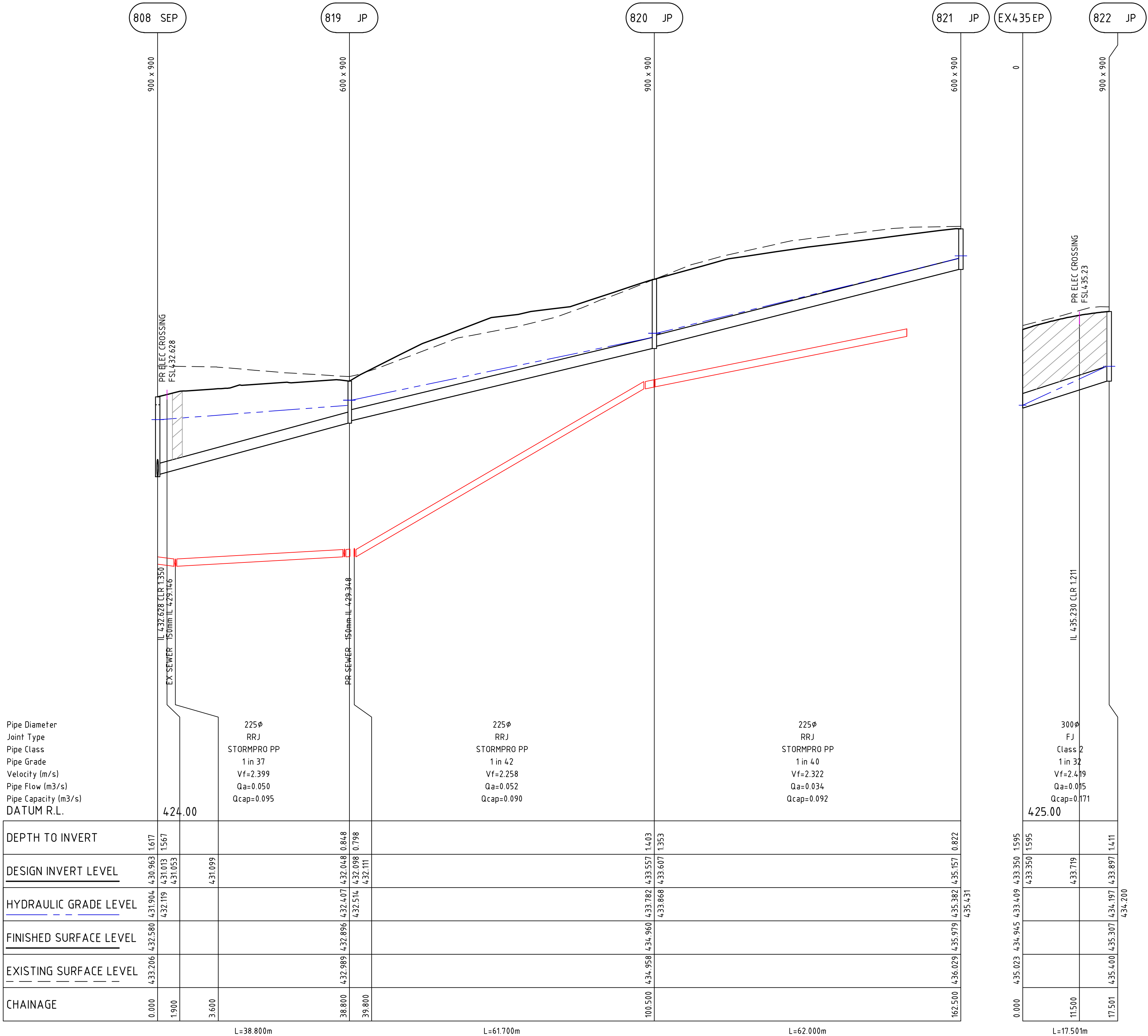
Designed M. WRIGHT	Checked B. IBBS
Authorised A. WILKIE	Date 02/03/22

CONROY'S GREEN
STAGE 8
ROAD AND DRAINAGE
DRAINAGE LONG SECTIONS - SHEET 2
CITY OF BALLARAT
SAN HUBERTO PROPERTIES P/L

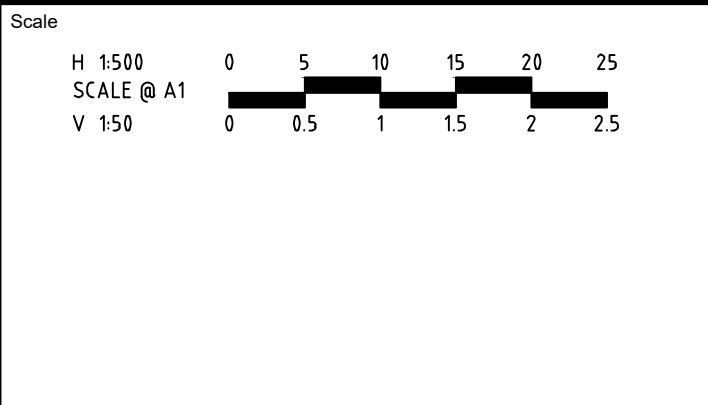
PRELIMINARY Drg No 309785CR601 Rev **A**

file name: 309785CR602.dwg layout name: CR602 plotted by: Mitchell Wright
file location: G:\309785\309785.dwg\A1.dwg plot date: 11/03/2022 3:27 PM Sheet 10 of 12 Sheets

 CRUSHED ROCK BACKFILL



Rev	A	PRELIMINARY ISSUE	A.W	02/03/22
Rev		Amendments	Approved	Date




System Certified

© Spiire Australia Pty Ltd All Rights Reserved
This document is produced by Spiire Australia Pty Ltd solely for the benefit of and use by the client in accordance with the terms of the retainer. Spiire Australia Pty Ltd does not and shall not assume any responsibility or liability whatsoever to any third party arising out of any use or reliance by third party on the content of this document.



16 BRIDGE STREET BENDIGO
VICTORIA 3550 AUSTRALIA T 61 3 5448 2500
spiire.com.au ABN 55 050 029 635

Designed M. WRIGHT	Checked B. IBBS
Authorised A. WILKIE	Date 02/03/22

CONROY'S GREEN
STAGE 8
ROAD AND DRAINAGE
DRAINAGE LONG SECTIONS - SHEET 3
CITY OF BALLARAT
SAN HUBERTO PROPERTIES P/L

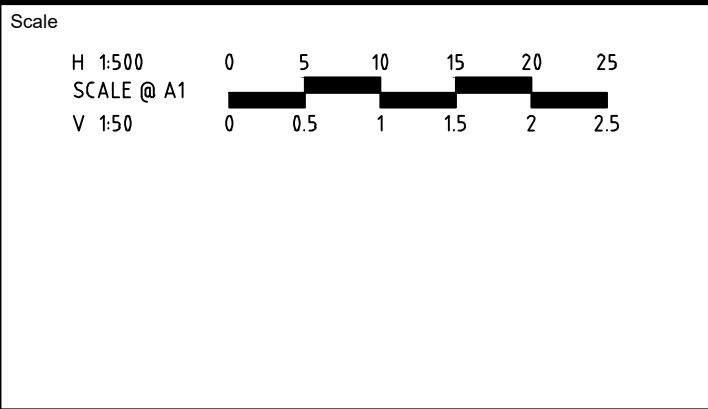
PRELIMINARY Drg No **309785CR602** Rev **A**

file name: 309785CR603.dwg layout name: CR603 plotted by: Mitchell Wright
file location: G:\30\309785\1\01\1\A\A\Plot date: 11/03/2022 3:27 PM Sheet 11 of 12 Sheets

DRAINAGE PIT SCHEDULE

PIT		INTERNAL		INLET		OUTLET		PIT		REMARKS	STEP IRONS	LADDER
NAME	TYPE	WIDTH	LENGTH	DIA	INV LEVEL	DIA	INV LEVEL	FS LEVEL	DEPTH			
Ex302	JUNCTION PIT	1050	900	525	4.27.485			4.29.409	1.999	EXISTING JUNCTION PIT		
801	JUNCTION PIT	900	900	525	4.27.736	525	4.27.686	4.29.686	2.000	REFER COB SD-P10-1/2. TO BE CONVERTED TO SEP IN FUTURE STAGE	X	
802	JUNCTION PIT	900	900	525	4.28.257	525	4.28.207	4.30.078	1.871	REFER COB SD-P10-1/2. TO BE CONVERTED TO SEP IN FUTURE STAGE	X	
803	JUNCTION PIT	900	1800	525	4.28.386	525	4.28.336	4.30.327	1.991	REFER COB SD-P10-1/2. TO BE CONVERTED TO DSEP IN FUTURE STAGE	X	
804	JUNCTION PIT	900	900	525	4.28.486	525	4.28.436	4.30.628	2.192	REFER COB SD-P10-1/2	X	
				300	4.29.247							
805	JUNCTION PIT	900	900	450	4.28.619	525	4.28.544	4.30.246	1.701	REFER COB SD-P10-1/2. TO BE CONVERTED TO SEP IN FUTURE STAGE	X	
806	JUNCTION PIT	900	900	375	4.29.284	450	4.29.209	4.31.053	1.844	REFER COB SD-P10-1/2. TO BE CONVERTED TO SEP IN FUTURE STAGE	X	
807	JUNCTION PIT	900	1800	300	4.29.755	375	4.29.680	4.31.332	1.652	REFER COB SD-P10-1/2. TO BE CONVERTED TO DSEP IN FUTURE STAGE	X	
				300	4.29.755							
808	SIDE ENTRY PIT	900	900	300	4.31.013	300	4.30.963	4.32.580	1.617	REFER COB SD-P1-1/2	X	
				300	4.31.013							
				225	4.31.013							
809	SIDE ENTRY PIT	900	900	300	4.32.321	300	4.32.271	4.33.813	1.542	REFER COB SD-P1-1/2	X	
				300	4.32.321							
810	JUNCTION PIT	900	900			300	4.33.729	4.35.236	1.507	REFER COB SD-P10-1/2	X	
811	JUNCTION PIT	900	900	300	4.33.190	300	4.33.140	4.34.717	1.576	REFER COB SD-P10-1/2	X	
812	SIDE ENTRY PIT	750	900			300	4.33.249	4.34.428	1.178	REFER COB SD-P1-1/2		
813	JUNCTION PIT	900	1800	300	4.29.864	300	4.29.814	4.31.339	1.525	REFER COB SD-P10-1/2. TO BE CONVERTED TO DSEP IN FUTURE STAGE	X	
814	SIDE ENTRY PIT	900	900	300	4.31.210	300	4.31.160	4.32.587	1.427	REFER COB SD-P1-1/2	X	
815	JUNCTION PIT	900	900	225	4.31.639	300	4.31.564	4.33.232	1.668	REFER COB SD-P10-1/2	X	
816	JUNCTION PIT	900	900	225	4.32.570	225	4.32.520	4.33.864	1.344	REFER COB SD-P10-1/2	X	
817	JUNCTION PIT	600	900			225	4.33.150	4.33.971	0.821	REFER COB SD-P10-1/2		
818	SIDE ENTRY PIT	750	900			300	4.32.627	4.33.806	1.179	REFER COB SD-P1-1/2		
819	JUNCTION PIT	600	900	225	4.32.098	225	4.32.048	4.32.896	0.848	REFER COB SD-P10-1/2		
820	JUNCTION PIT	900	900	225	4.33.607	225	4.33.557	4.34.960	1.403	REFER COB SD-P10-1/2	X	
821	JUNCTION PIT	600	900			225	4.35.157	4.35.979	0.822	REFER COB SD-P10-1/2		
Ex435	ENDPIPE	0	0	300	4.33.350			4.34.945	1.595			
822	JUNCTION PIT	900	900			300	4.33.897	4.35.307	1.411	REFER COB SD-P10-1/2	X	

A	PRELIMINARY ISSUE	A.W	02/03/22
Rev	Amendments	Approved	Date



System Certified

© Spiire Australia Pty Ltd All Rights Reserved
This document is produced by Spiire Australia Pty Ltd solely for the benefit of and use by the client in accordance with the terms of the retainer. Spiire Australia Pty Ltd does not and shall not assume any responsibility or liability whatsoever to any third party arising out of any use or reliance by third party on the content of this document.

16 BRIDGE STREET BENDIGO
VICTORIA 3550 AUSTRALIA T 61 3 5448 2500
spiire.com.au ABN 55 050 029 635

Designed M. WRIGHT	Checked B. IBBS
Authorised A. WILKIE	Date 02/03/22

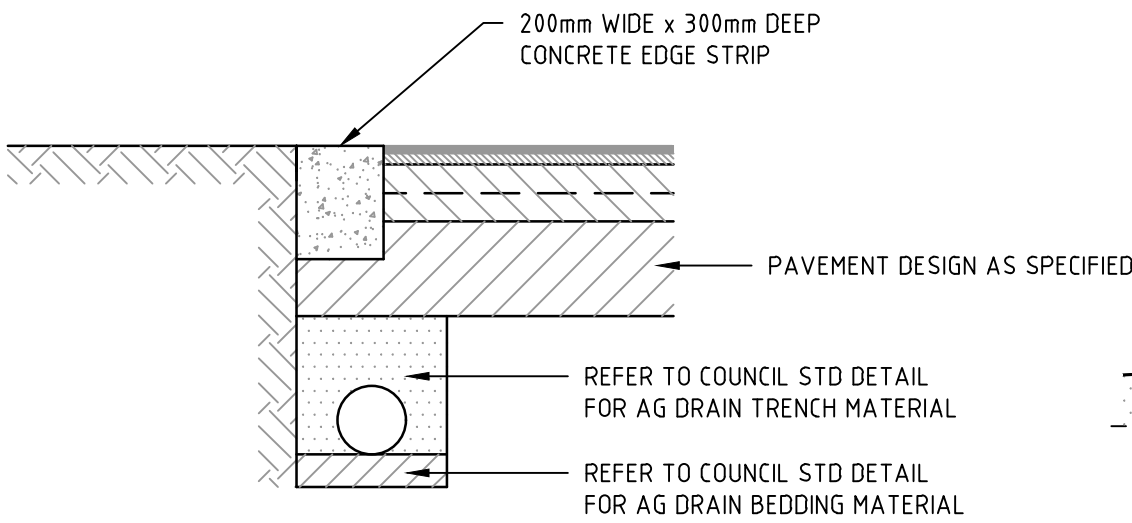
CONROY'S GREEN
STAGE 8
ROAD AND DRAINAGE
DRAINAGE LONG SECTIONS - PIT SCHEDULE
CITY OF BALLARAT
SAN HUBERTO PROPERTIES P/L

PRELIMINARY

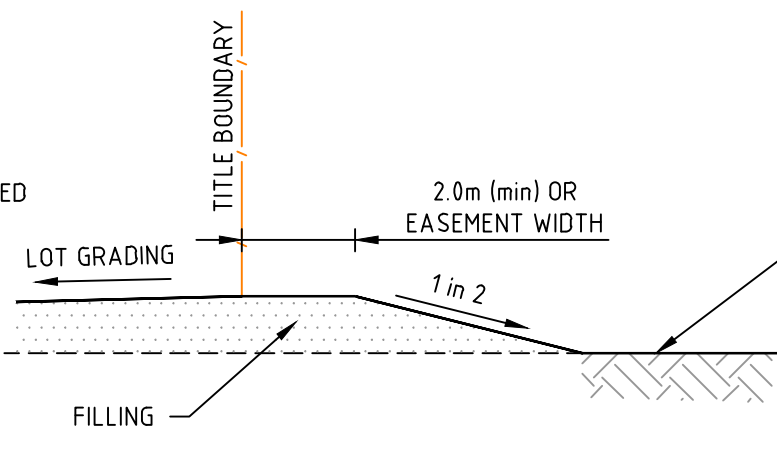
Drg No
309785CR603

Rev
A

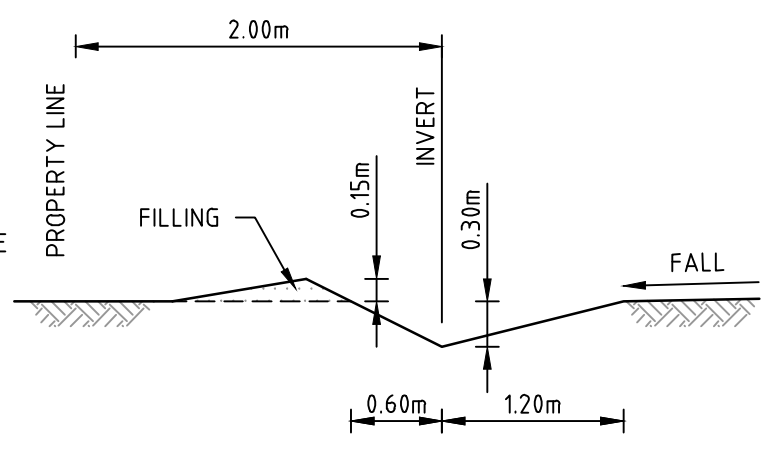
file name: 309785CR700.dwg, layout name: C0700, plotted by: M.Hill, Wright
file location: G:\30\309785\CON\ALAB\plot date: 11/03/2022 3:28 PM, Sheet 12 of 12 Sheets



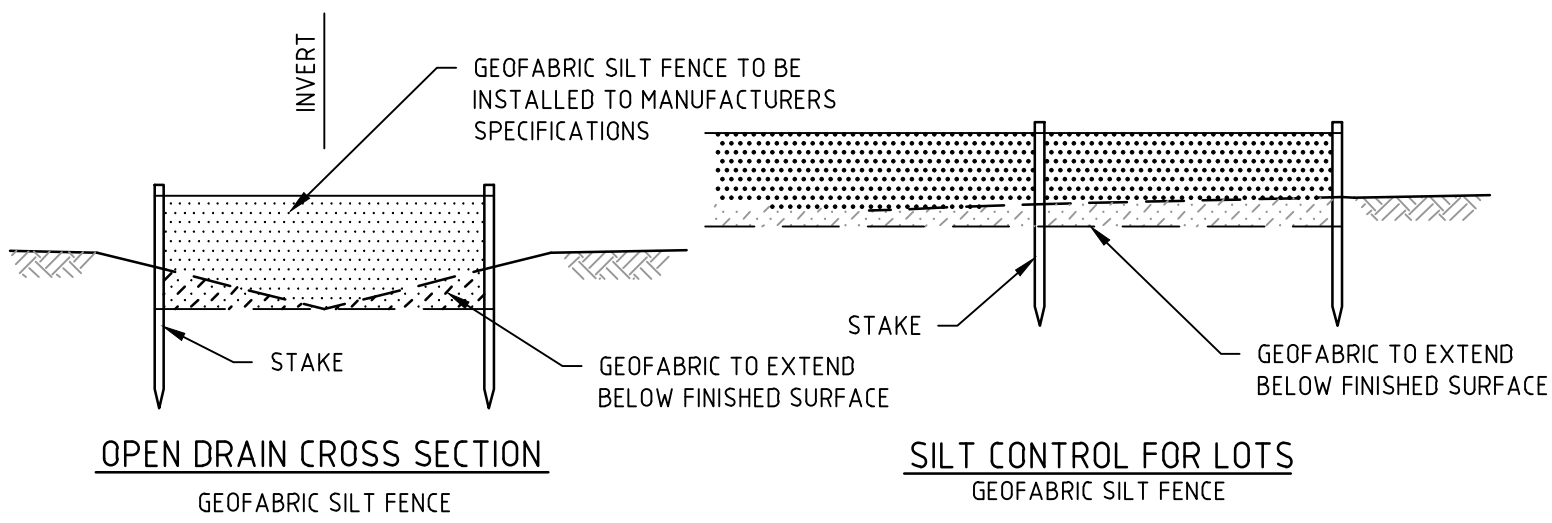
LIMIT OF WORKS CONCRETE EDGE STRIP & PAVEMENT INTERFACE DETAIL



LOT FILLING AT STAGE BOUNDARY

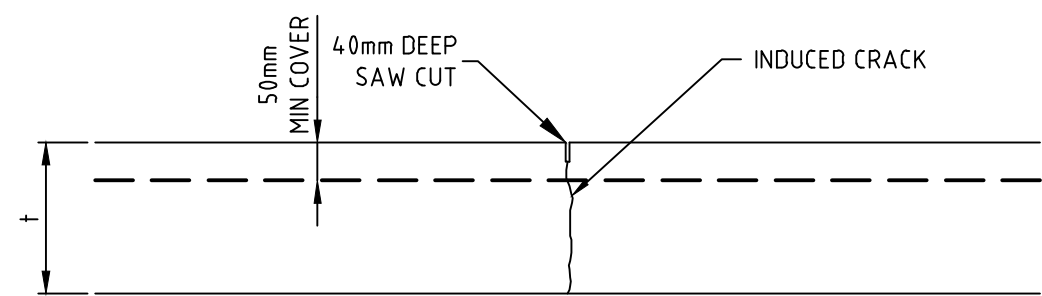


TYPICAL CATCH DRAIN SECTION

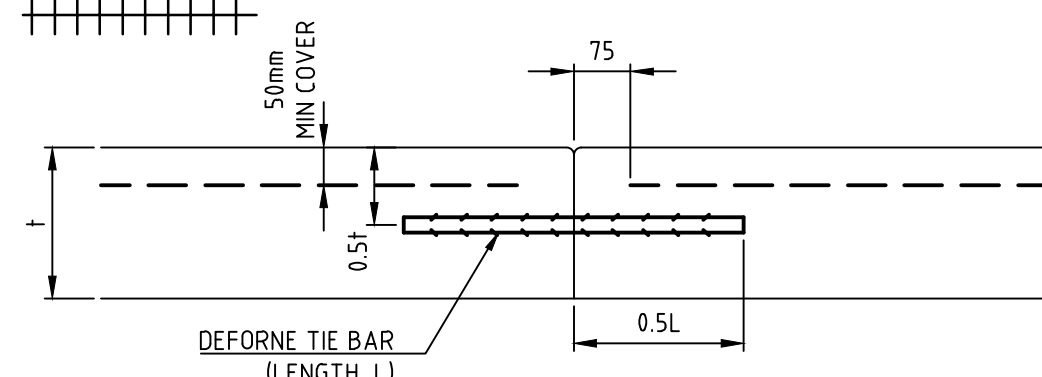


SILT CONTROL OPTIONS
NOT TO SCALE

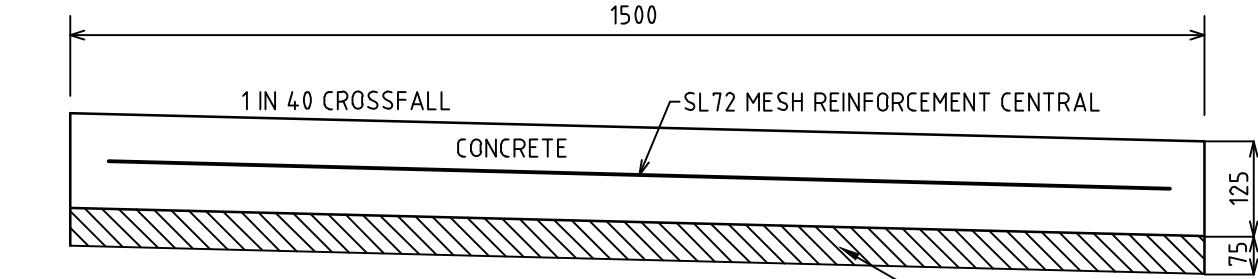
SAW CUT



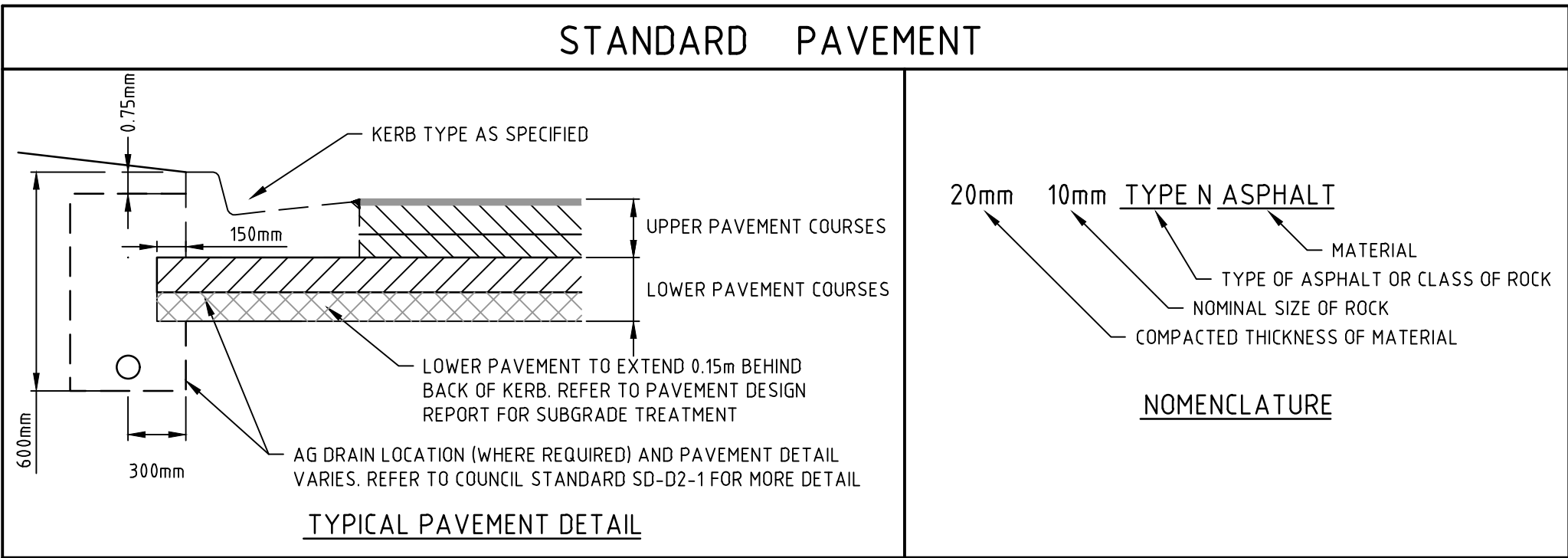
CONSTRUCTION JOINT



CONSTRUCTION JOINT



FOOTPATH
(NOT TO SCALE)
GENERALLY AS PER COB SD-K3-2
FOOTPATH TO BE 25MPa FOR RESIDENTIAL



DESIGN PAVEMENT PROFILE

PAVEMENT LAYER	DESCRIPTION	DEPTH (mm)
ASPHALT WEARING COURSE (mm)	SIZE 10mm TYPE N ASPHALT CLASS 320 BITUMEN	40
SAMI LAYER		YES
PRIMER COURSE	PRIME OR 7mm PRIMERSEAL	YES
BASE COURSE (mm)	CLASS 1 or 2 28mm FCR, COMPACTED TO 98% (HMOD)	150
SUBBASE COURSE (mm)	CLASS 3 28mm or 45mm FCR, COMPACTED TO 97% (HMOD)	220
CAPPING LAYER (mm)	INSITU CLAY STABILISED WITH 3% LIME OR IMPORTED MATERIAL TO ACHIEVE THE FOLLOWING PROPERTIES: CBR<10, SWELL<15%, PERMEABILITY<5x10 ⁻⁹ m/s & COMPACTED TO 98% (SMD)	150
TOTAL PAVEMENT DEPTH		560

ROAD NAME	TYPE
HAWK STREET	A
GULL STREET	A

* REFER PAVEMENT PLAN FOR LOCATION OF PAVEMENT TYPES

PAVEMENT DETAILS

THE PAVEMENT DESIGNS SHOWN HERE HAVE BEEN DESIGNED/PROVIDED BY GTS WHO ARE RESPONSIBLE FOR THE GEOTECHNICAL WORK ON THIS PROJECT. SPIIRE IS NOT RESPONSIBLE FOR THE WORK OF GTS.

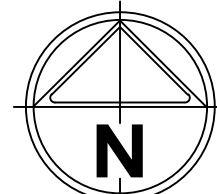
THE DESIGN HAS BEEN EXTRACTED FROM THE GTS REPORT ON "520 GREENHALGHS RD, WINTER VALLEY" THIS DOCUMENT SHOULD BE REVIEWED TO ENSURE THAT THE DESIGN HAS BEEN ACCURATELY REPRODUCED.

A COPY OF THE DOCUMENT WILL BE PROVIDED TO YOU ON REQUEST.

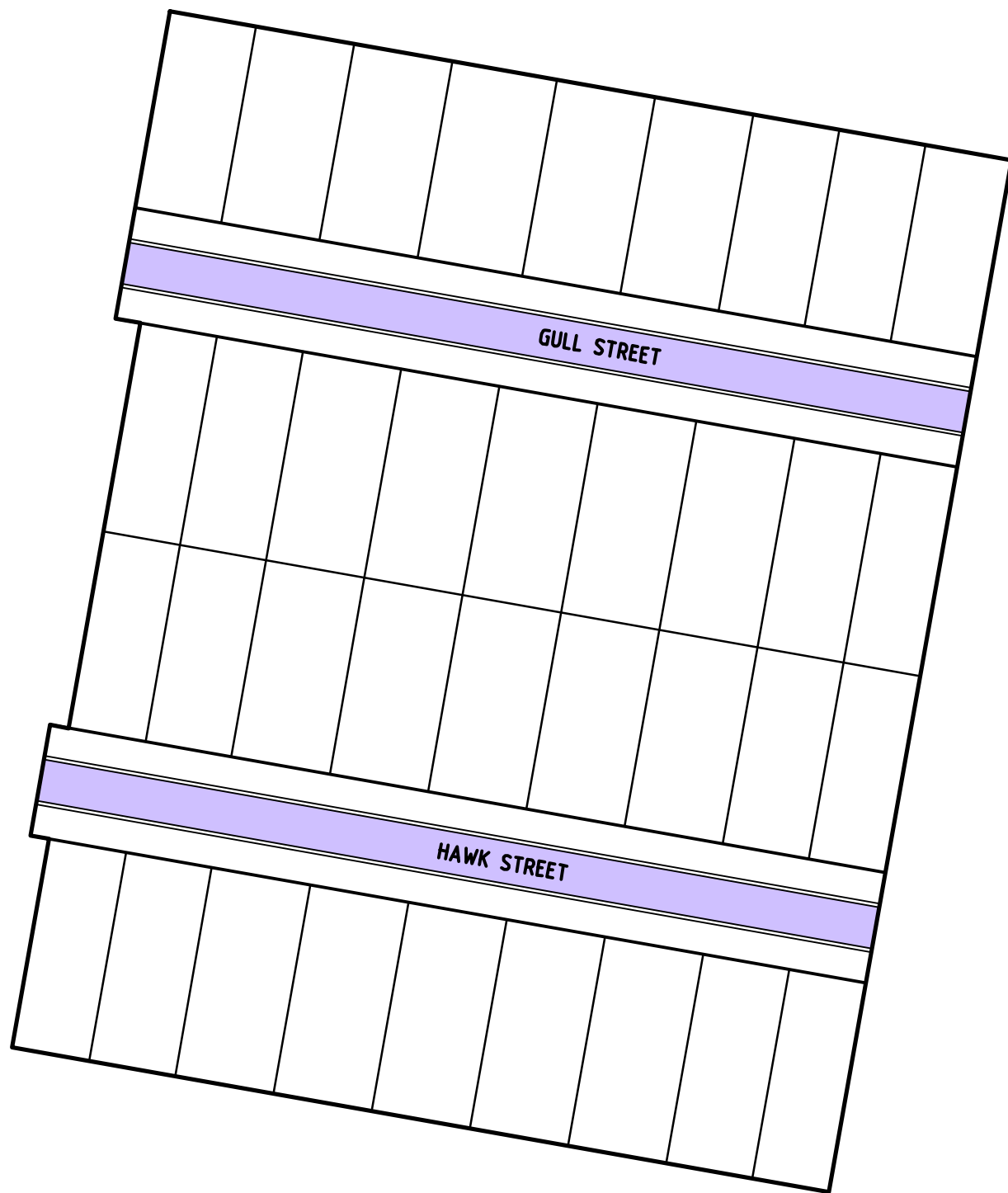
SPIIRE DOES NOT ACCEPT ANY RESPONSIBILITY FOR THE ACCURACY, ADEQUACY OR APPROPRIATENESS OF THE GEOTECHNICAL WORK AND PAVEMENT DESIGNS.
ANY QUERIES IN RESPECT TO THE GEOTECHNICAL WORK AND PAVEMENT DESIGNS SHOULD BE ADDRESSED TO GTS AND SENT TO SPIIRE.

PAVEMENT PLAN

H 1:1000
SCALE @ A1



MGA 2020
ZONE 54



GENERAL NOTES:

- ALL WORKS TO BE COMPLETED IN ACCORDANCE WITH RELEVANT AUSTRALIAN STANDARDS AND CCAA LITERATURE; OR VIC ROADS STANDARDS FOR NON RESIDENTIAL STREETS.
- ALL CONCRETE TO BE MINIMUM 32MPa COMPRESSIVE STRENGTH
- CONCRETE TO BE THOROUGHLY COMPACTED USING EITHER SURFACE AND/OR IMMERSION VIBRATORS, PARTICULARLY AROUND REINFORCEMENT AND IN CORNERS OF FORMS.
- PRIOR TO CASTING, THE UNBOUND GRANULAR SUBBASE MUST BE DAMP TO ENSURE NO EARLY "DRYING OUT" OF THE CONCRETE.
- CURING OF CONCRETE IS ESSENTIAL - IDEALLY BY MAINTAINING WET HESSIAN OR SEALING WITH PLASTIC SHEETING.
- SAW CUTTING OF CONCRETE SHOULD BE COMMENCED AS SOON AS CONCRETE PERMITS BY EXPERIENCED CONTRACTORS, BUT NO LATER THAN 12 HOURS AFTER POUR.
- ALL DOWELS TO BE GRADE 250R STEEL BARS, 450mm LONG AND PLACED AT 300mm CENTRES. REFER CCAA- "CONCRETE PAVEMENT DESIGN FOR RESIDENTIAL STREETS" FOR DOWEL DIAMETERS. DOWELS MUST BE ACCURATELY PLACED TO ENSURE THE JOINT DOES NOT "LOCK". INSERTION OF DOWELS DURING THE PLACING OF CONCRETE IS NOT ACCEPTABLE. DOWELS MUST BE SAWN AND NOT CROPPED.
- ALL JOINTS TO BE APPROPRIATELY SEALED TO RESIST THE INTRUSION OF SAND AND GRAVEL AND TO MINIMISE THE INGRESS OF WATER.
- VARIATION TO JOINT LAYOUT BY CONTRACTOR WILL NOT BE ACCEPTED WITHOUT SPECIFIC WRITTEN APPROVAL OF SUPERINTENDENT & COUNCIL.

Rev	Description	By	Date
A	PRELIMINARY ISSUE	A.W	02/03/22
Rev	Amendments	Approved	Date

Scale



© Spiire Australia Pty Ltd All Rights Reserved
This document is produced by Spiire Australia Pty Ltd solely for the benefit of and use by the client in accordance with the terms of the retainer. Spiire Australia Pty Ltd does not and shall not assume any responsibility or liability whatsoever to any third party arising out of any use or reliance by third party on the content of this document.

spiire

16 BRIDGE STREET BENDIGO
VICTORIA 3550 AUSTRALIA T 61 3 5448 2500
spiire.com.au ABN 55 050 029 635

Designed
M. WRIGHT
Authorised
A. WILKIE

Checked
B. IBBS
Date
02/03/22

**CONROY'S GREEN
STAGE 8
ROAD AND DRAINAGE
PAVEMENT AND TYPICAL DETAILS**
CITY OF BALLARAT
SAN HUBERTO PROPERTIES P/L

PRELIMINARY Drg No 309785CR700 Rev A



ENVIRONMENTAL PROTECTION

E1 TRAFFIC AND SITE ACCESS ✓	E2 ENVIRONMENTAL AUDIT AREAS (CONTAMINATION) ✗	E3 ARCHAEOLOGICAL/HERITAGE ✓	E4 FLORA AND FAUNA ✓
E5 MANAGEMENT OF IMPORTED AND EXPORTED SOIL ✓	E6 DUST, NOISE AND ODOUR CONTROL ✓	E7 ASSESSMENT AND MANAGEMENT OF POTENTIALLY CONTAMINATED SOIL ✗	E8 STOCKPILING OF SOIL ✓
E9 EROSION AND SEDIMENT CONTROL ✓	E10 STORMWATER MANAGEMENT ✓	E11 SOLID WASTE MANAGEMENT ✗	E12 PLACEMENT OF TEMPORARY INFRASTRUCTURE ✓
CONTROL PUMP-OUT POINT CONTRACTOR TO MARK LOCATION OF SEDIMENT CONTROL POINTS ON PLAN FOR APPROVAL ALSO INDICATING METHOD ★		E13 HAZARDOUS CHEMICAL STORAGE AND HANDLING ✓	E14 BLASTING/ VIBRATION CONTROL ✗

GENERAL NOTES

- REFER TO SPECIFICATION FOR DETAIL ON SPECIFIC CLAUSES.
- THE PURPOSE OF THIS PLAN & RELATED SPECIFICATION IS TO IDENTIFY ENVIRONMENTAL AND HEALTH AND SAFETY ISSUES THAT MUST BE CONSIDERED. THE CONTRACTOR SHALL USE THIS PLAN AND RELATED SPECIFICATIONS TO GENERATE THEIR OWN ENVIRONMENTAL MANAGEMENT AND HEALTH AND SAFETY PLAN TO IMPLEMENT PRIOR TO THE COMMENCEMENT OF CONSTRUCTION.
- EXISTING FENCINGS ARE SHOWN ON THE ENGINEERING DRAWINGS. UNLESS SPECIFIED FOR DEMOLITION THE CONTRACTOR SHALL NOT REMOVE OR RELOCATE THE FENCING UNLESS PRIOR WRITTEN APPROVAL HAS BEEN OBTAINED FROM THE SUPERINTENDENT.
- THE CONTRACTOR IS TO PROVIDE SEDIMENT FENCE TO CONTROL SILT FOR ALL STORMWATER RUNOFF FROM THE SITE.
- SITE SECURITY IS THE RESPONSIBILITY OF THE CONTRACTOR. ANY ADDITIONAL FENCING REQUIRED FOR THIS PURPOSE IS TO BE SUPPLIED AND INSTALLED BY THE CONTRACTOR. SECURITY FENCING IS NOT SHOWN ON THIS PLAN.
- KEY ENVIRONMENTAL CONSIDERATIONS SURROUNDING THE SITE OF WORKS ARE MARKED AT TYPICAL LOCATIONS AND THEREFORE SHOULD NOT BE LIMITED TO THOSE AS NOTED. SIMILAR ENVIRONMENTAL TREATMENTS AND PRECAUTIONS SHOULD BE TAKEN FOR ALL POINTS AS MARKED.
- TREES TO BE REMOVED SHALL BE CLEARLY MARKED BY THE SUPERINTENDENT WITH BRIGHT VISIBLE TAPE.
- FOR FURTHER CLARIFICATIONS ON THE CULTURAL AND ARCHAEOLOGICAL SIGNIFICANCE AND PRESERVATIONS WITHIN THE SITE REFER TO THE 'ARCHAEOLOGICAL CONSULTING SERVICES' REPORT, JUNE 2004.

WARNING

BEWARE OF UNDERGROUND SERVICES
THE LOCATIONS OF UNDERGROUND SERVICES ARE APPROXIMATE ONLY AND THEIR EXACT POSITION SHOULD BE PROVEN ON SITE. NO GUARANTEE IS GIVEN THAT ALL EXISTING SERVICES ARE SHOWN.

BEWARE OF OVERHEAD ELECTRICITY
CONTRACTOR TO EXERCISE EXTREME CARE WHEN WORKING UNDER OVERHEAD ELECTRICITY. CONTACT POWERCOR FOR SAFETY GUIDELINES FOR WORKING UNDER POWERLINES

LEGEND

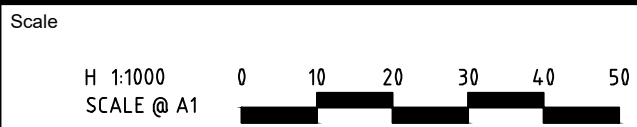
	LOCATION OF SITE COMPOUND
	SILT FENCE
	SILT SOCK

HEALTH AND SAFETY PROTECTION

H1 EXISTING UNDERGROUND SERVICES ✓ CONTRACTOR TO CONDUCT 'MOGS' INQUIRY AND NOTIFY ALL AUTHORITIES TO LOCATE EXISTING SERVICES.	H2 RESPONSIBILITIES ✓ CONTRACTOR TO FORWARD DETAILS OF THE NOMINATED OH&S REPRESENTATIVE.
H3 BLASTING ✗	H4 SITE ACCESS RESTRICTED AREAS ✗
H5 DUST CONTROL & NOISE CONTROL ✓	H6 SITE INDUCTIONS ✓ CONTRACTOR TO ENSURE THAT ALL SUBCONTRACTORS ARE AWARE OF THE REQUIREMENTS SET OUT IN THE EMP.
H7 MANAGEMENT OF CONTAMINATED SOIL / GROUNDWATER / SURFACE WATER ✗	H8 SIGNAGE ✓
H9 TRAFFIC MANAGEMENT ✓	H10 ACCIDENTAL DISTURBANCE OR CONTACT ✗
H11 EMERGENCY PROCEDURES ✓	H12 ACCIDENT REPORTING ✓
H13 OPERATING PLANT / MACHINERY ✓	H14 EXCAVATIONS, CONFINED SPACES & VOIDS ✓

file name: 309785CE000.dwg layout: cems CE001 plotted by: Mitchell Wright
file location: G:\309785\CON\ACAD\Plot date: 11/03/2022 3:28 PM Sheet 1 of 3 Sheets

Rev	A	PRELIMINARY ISSUE	A.W	04/02/22
Rev		Amendments	Approved	Date



© Spiire Australia Pty Ltd All Rights Reserved
This document is produced by Spiire Australia Pty Ltd solely for the benefit of and use by the client in accordance with the terms of the retainer. Spiire Australia Pty Ltd does not and shall not assume any responsibility or liability whatsoever to any third party arising out of any use or reliance by third party on the content of this document.

spiire
16 BRIDGE STREET BENDIGO
VICTORIA 3550 AUSTRALIA T 61 3 5448 2500
spiire.com.au ABN 55 050 029 635

Designed
M. WRIGHT
Authorised
A.WILKIE

Checked
B.IBBS
Date
04/02/22

**CONROY'S GREEN
STAGE 8**
ENVIRONMENTAL MANAGEMENT PLAN - SHEET 1
CITY OF BALLARAT
SAN HUBERTO PROPERTIES P/L
PRELIMINARY Drg No **309785CE001** Rev **(A)**

