

PLAN OF SUBDIVISION

EDITION 1

PS 836678X/S3

LOCATION OF LAND

Parish : WANGARATTA SOUTH
 Township :
 Section : 10
 Crown Allotment : 3 (PART)
 Crown Portion :
 Title References : Vol.12453 Fol. 304
 Last Plan Reference : LOT S3 ON PS 836678X
 Postal Address : REITH ROAD
 (at time of subdivision) WANGARATTA VIC 3677
 MGA Co-ordinates
 (of approx centre of land in plan) E 435610 Zone 55
 N 5976590 GDA 2020

Council Name: RURAL CITY OF WANGARATTA

VESTING OF ROADS AND/OR RESERVES

NOTATIONS

Identifier	Council / Body / Person
ROAD R-4	RURAL CITY OF WANGARATTA
RESERVE No. 3	RURAL CITY OF WANGARATTA
RESERVE No. 4	RURAL CITY OF WANGARATTA
RESERVE No. 5	RURAL CITY OF WANGARATTA
RESERVE No. 6	AUSNET ELECTRICITY SERVICES PTY LTD
RESERVE No. 7	NORTH EAST REGION WATER CORPORATION
RESERVE No. 8	RURAL CITY OF WANGARATTA

Lots 74 & 128 have been omitted from this plan

OTHER PURPOSE OF PLAN

To remove part of easement E-2 shown on PS 836678X as set out in PS 836678X

To remove part of easement E-3 shown on PS 836678X as set out in PS 836678X

To remove easement E-8 shown on PS 836678X/S2 as set out in PS 836678X/S2

To remove part easement E-9 shown on PS 836678X/S2 as set out in PS 836678X/S2

GROUND FOR REMOVAL

Rural City of Wangaratta Planning Permit No. PInApp19/231

WATERWAY NOTATION:

Land in this plan may abut Crown Land that may be subject to a Crown Licence to use

NOTATIONS

DEPTH LIMITATION: DOES NOT APPLY

SURVEY : This plan is based on survey

This survey has been connected to permanent marks no(s). 26, 471, 474, 475 & 641

In Proclaimed Survey Area no. 64

STAGING : This is a staged subdivision
 Planning Permit no. PInApp19/231

EASEMENT INFORMATION

LEGEND : A-Appurtenant Easement E-Encumbering Easement R-Encumbering Easement (Road)

Easement Reference	Purpose	Width (Metres)	Origin	Land Benefited / In Favour Of
E-1	SEWERAGE	SEE PLAN	PS 836678X	NORTH EAST REGION WATER CORPORATION
E-2	DRAINAGE	SEE PLAN	PS 836678X	RURAL CITY OF WANGARATTA
E-9	SEWERAGE	SEE PLAN	PS 836678X	NORTH EAST REGION WATER CORPORATION
E-11	SEWERAGE	SEE PLAN	THIS PLAN	NORTH EAST REGION WATER CORPORATION
E-12	CARRIAGEWAY	SEE PLAN	THIS PLAN	RURAL CITY OF WANGARATTA



PO Box 2223
 Echuca VIC 3564
 Phone 03 5480 0688
 stephen@nesd.com.au

SURVEYORS FILE REF: M7767

STEPHEN MOLNAR, VERSION 1

Original sheet size A3

Sheet 1 of 11 Sheets

SEE SHEET 3 FOR ENLARGEMENT
OF LOTS 129-138 (INCL.) & 144-149 (INCL.)

SEE SHEET 4 FOR ENLARGEMENT
OF LOTS 76-79 (INCL.), 86-88 (INCL.),
126-127 (INCL.), 139-143 (INCL.) & RESERVE No. 4

SEE SHEET 5 FOR ENLARGEMENT
OF LOTS 73, 75 & 80-85 (INCL.)

SEE SHEET 6 FOR ENLARGEMENT
OF LOTS 89-98 (INCL.)

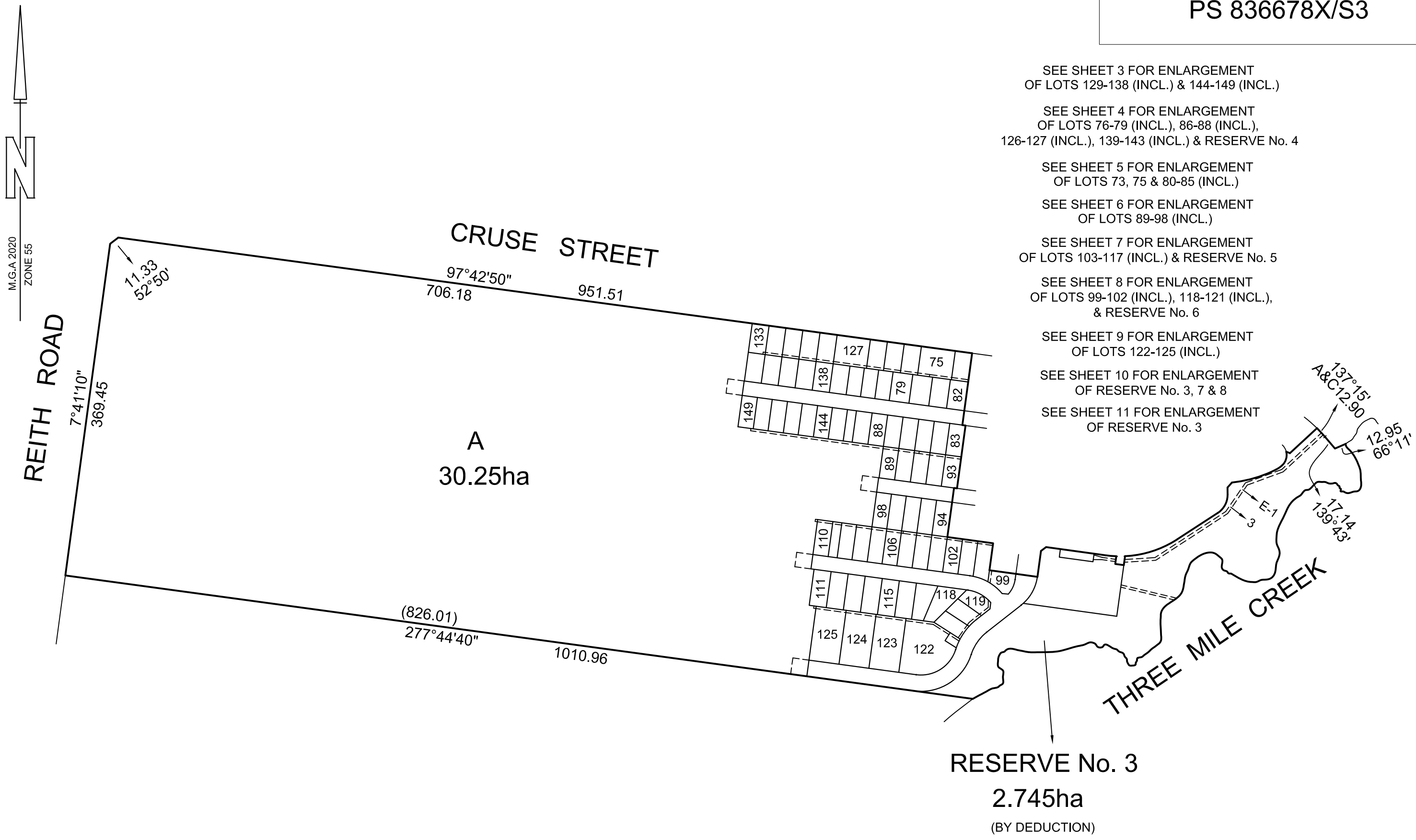
SEE SHEET 7 FOR ENLARGEMENT
OF LOTS 103-117 (INCL.) & RESERVE No. 5

SEE SHEET 8 FOR ENLARGEMENT
OF LOTS 99-102 (INCL.), 118-121 (INCL.),
& RESERVE No. 6

SEE SHEET 9 FOR ENLARGEMENT
OF LOTS 122-125 (INCL.)

SEE SHEET 10 FOR ENLARGEMENT
OF RESERVE No. 3, 7 & 8

SEE SHEET 11 FOR ENLARGEMENT
OF RESERVE No. 3

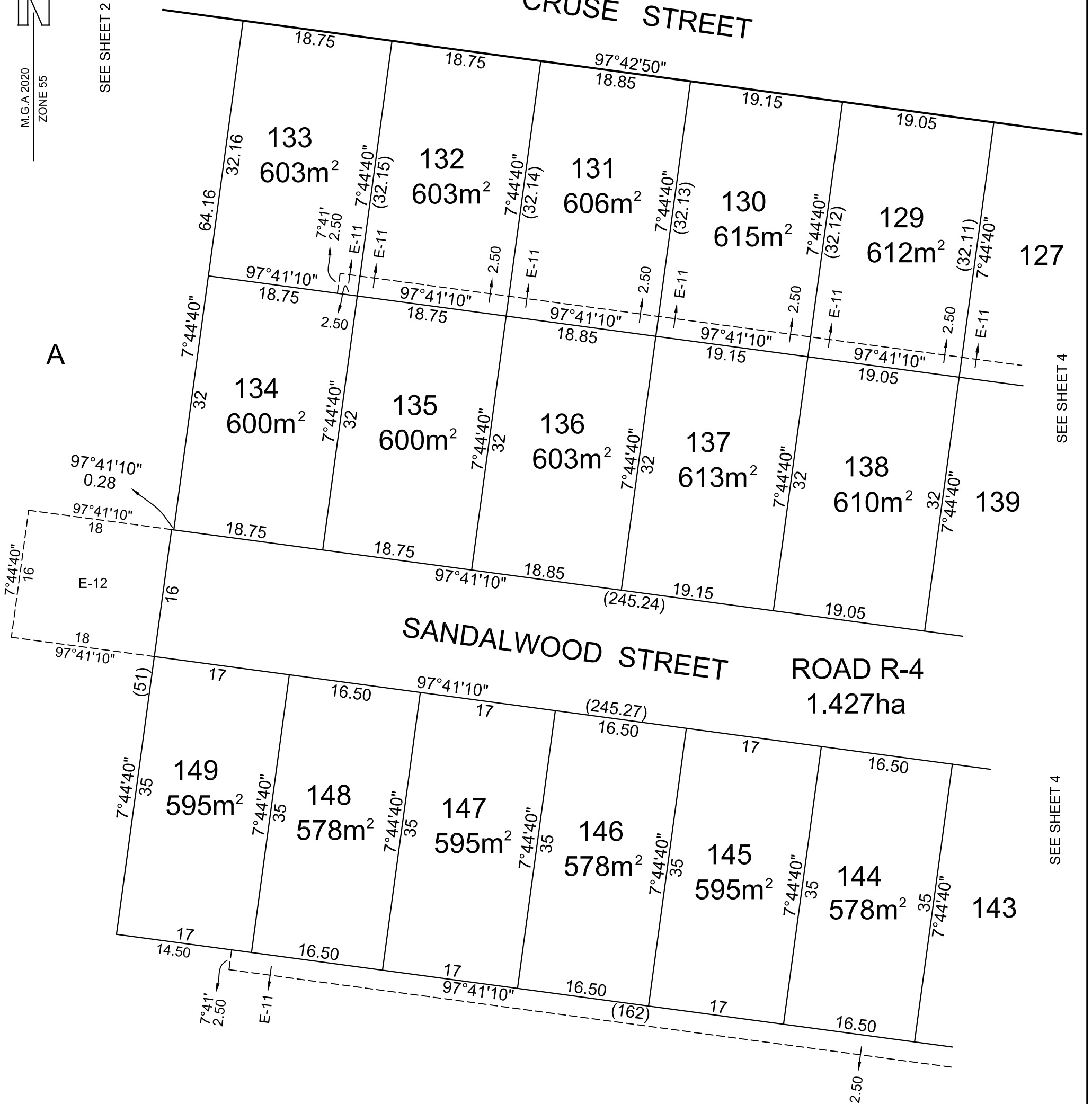




M.G.A. 2020
ZONE 55

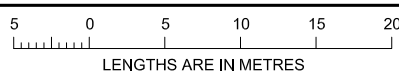
SEE SHEET 2

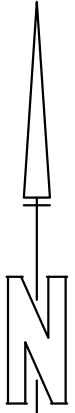
CRUSE STREET



SEE SHEET 4

SEE SHEET 4





M.G.A. 2020
ZONE 55

SEE SHEET 3

SEE SHEET 3

SEE SHEET 5

SEE SHEET 5

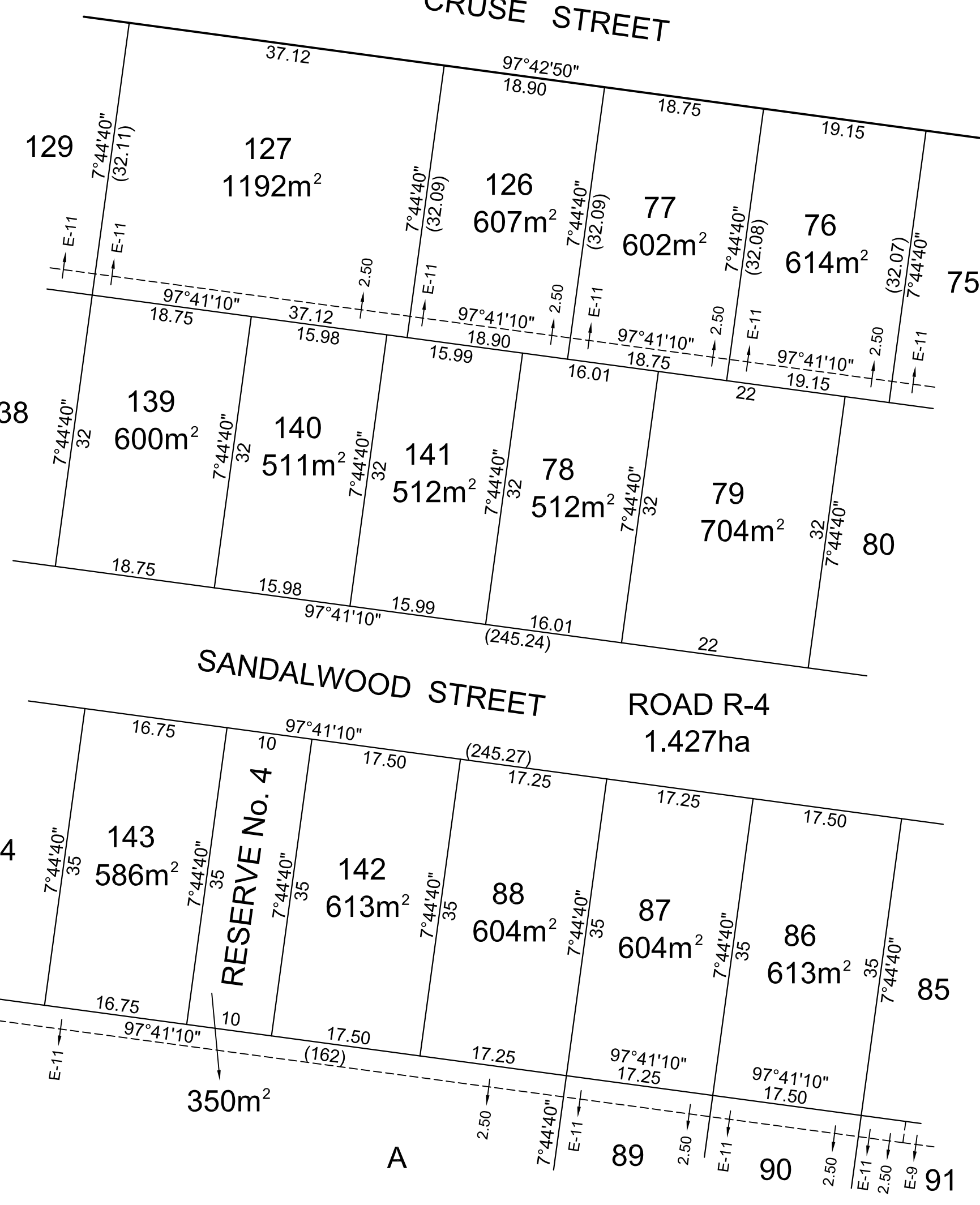
SEE SHEET 6

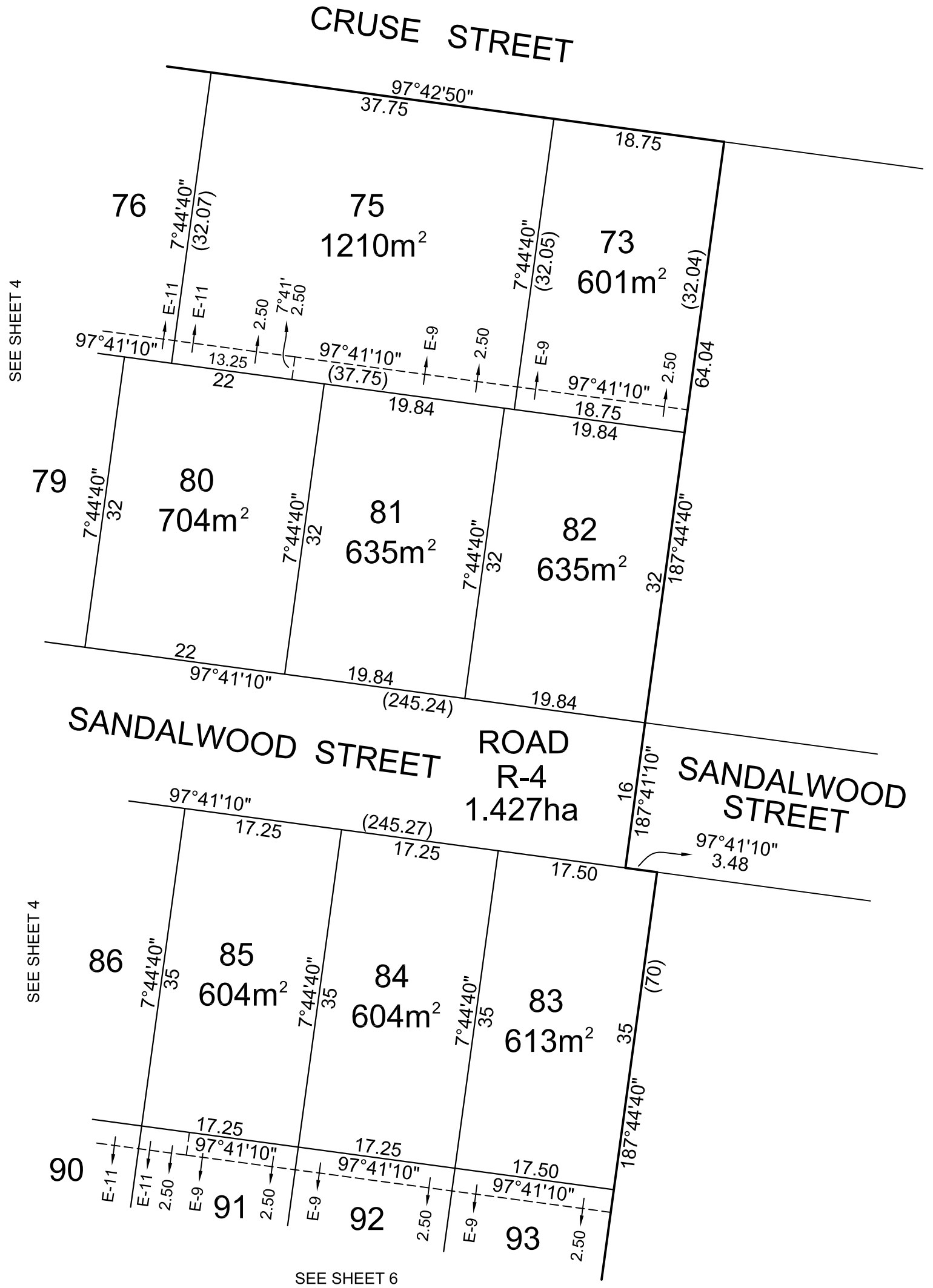
CRUSE STREET

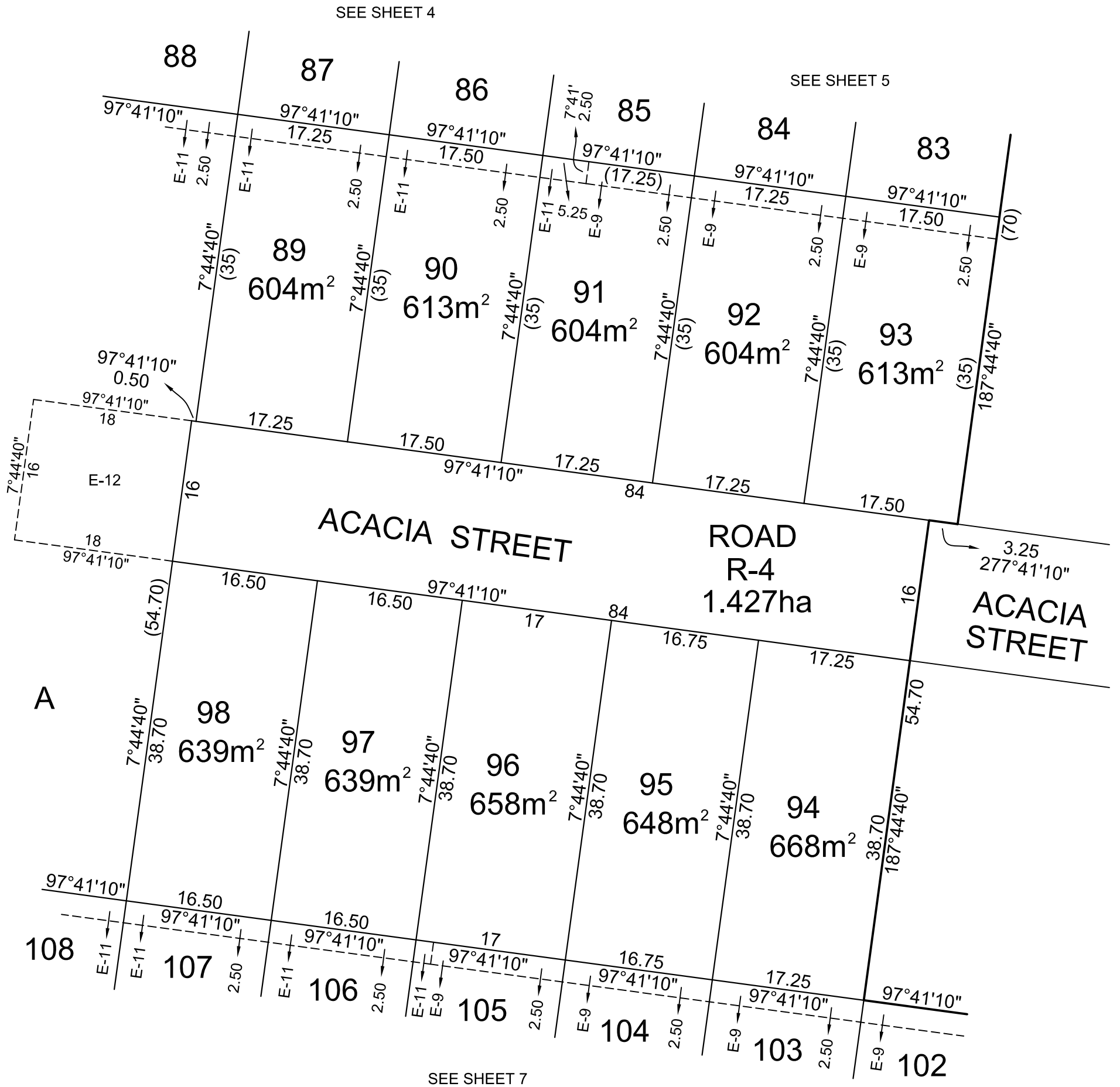
SANDALWOOD STREET

**ROAD R-4
1.427ha**

RESERVE No. 4







A

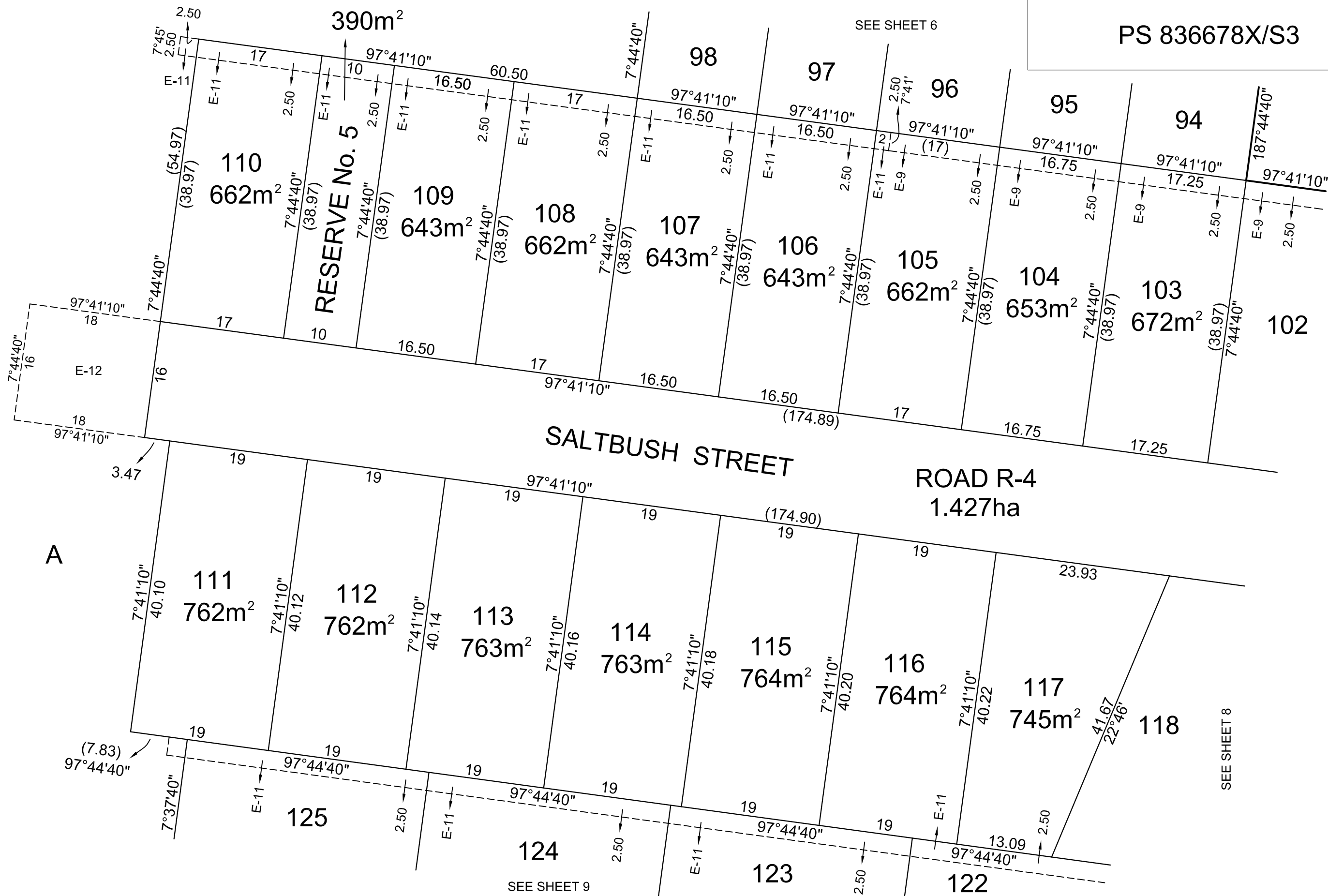
SEE SHEET 7



PS 836678X/S3

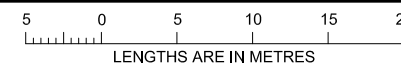
SEE SHEET 6

SEE SHEET 8



PO Box 2223
 Echuca VIC 3564
 Phone 03 5480 0688
 stephen@nesd.com.au

Scale
 1:500



Original sheet
 size A3

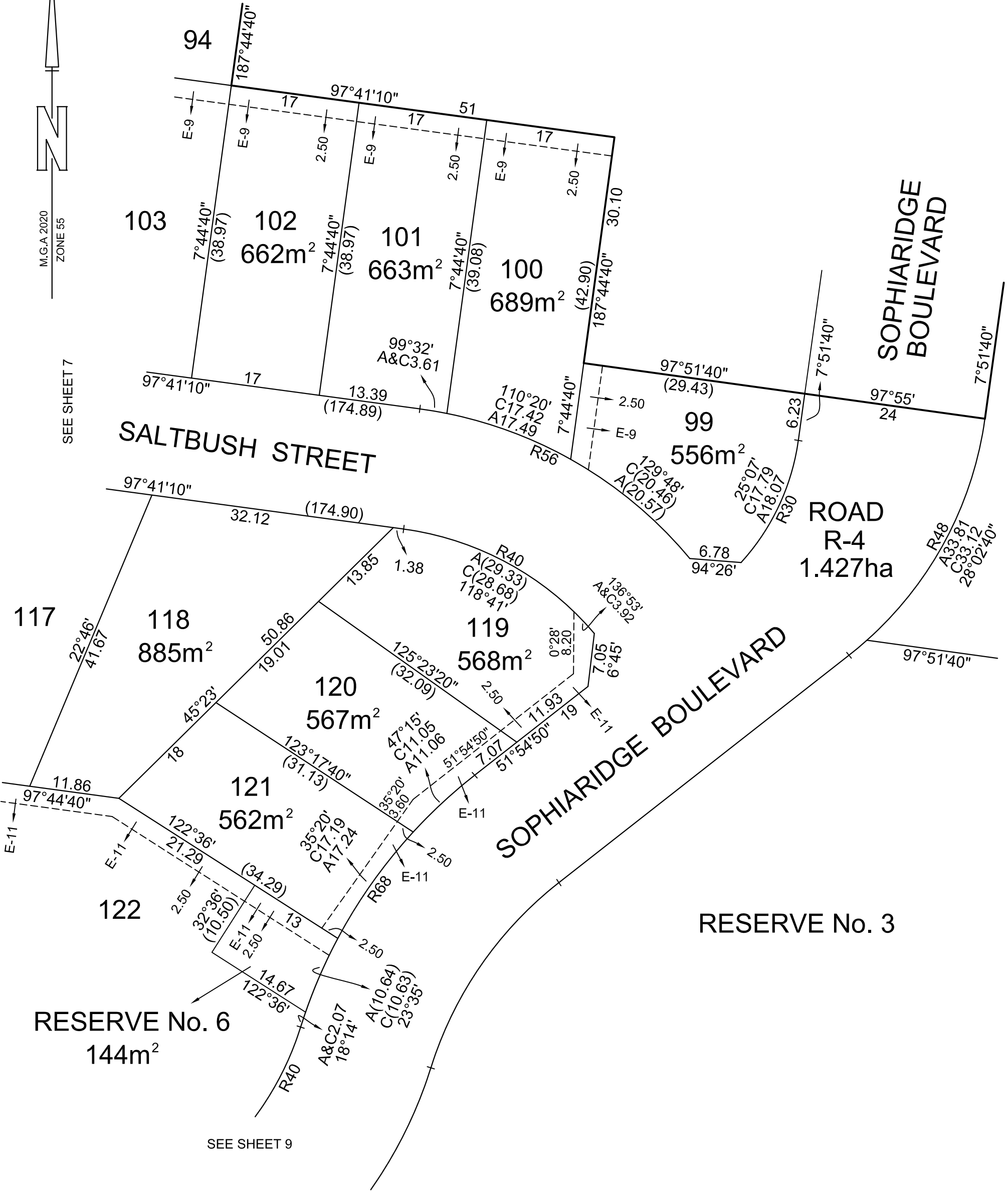
Sheet 7

STEPHEN MOLNAR, VERSION 1

M.G.A. 2020
ZONE 55



SEE SHEET 7



RESERVE No. 8

SEE SHEET 10

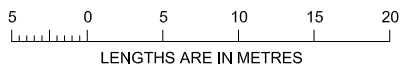
RESERVE No. 3

SEE SHEET 9



PO Box 2223
Echuca VIC 3564
Phone 03 5480 0688
stephen@nesd.com.au

Scale
1:500



Original sheet
size A3

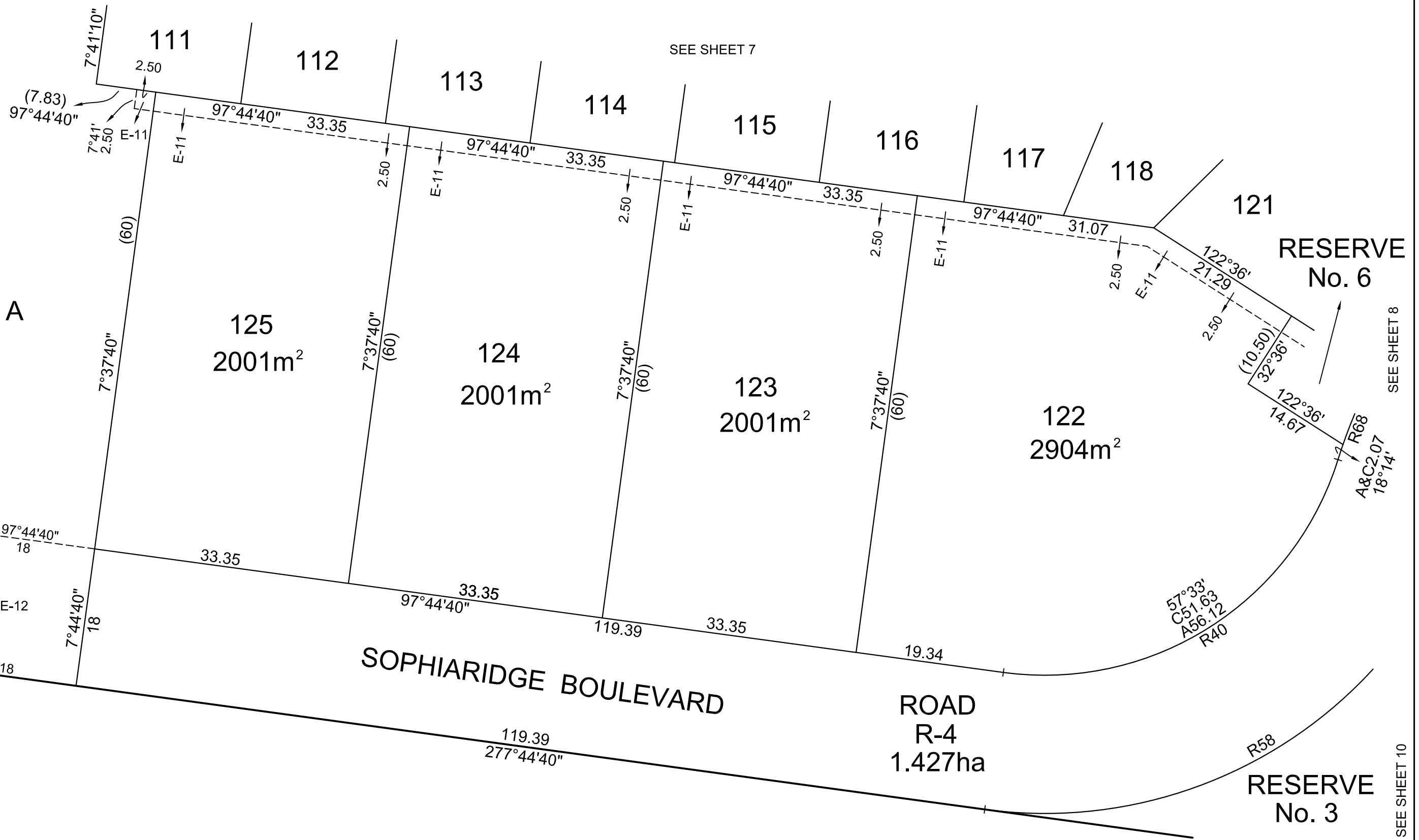
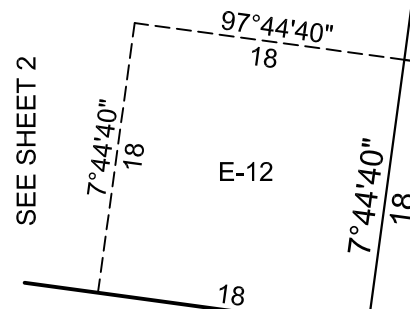
Sheet 8

STEPHEN MOLNAR, VERSION 1



M.G.A. 2020
ZONE 55

SEE SHEET 2



SEE SHEET 8

SEE SHEET 10

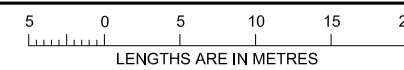


PO Box 2223
Echuca VIC 3564

Phone 03 5480 0688

stephen@nesd.com.au

Scale
1:500



Original sheet
size A3

Sheet 9

STEPHEN MOLNAR, VERSION 1



M.G.A. 2020
ZONE 55

SEE SHEET 9

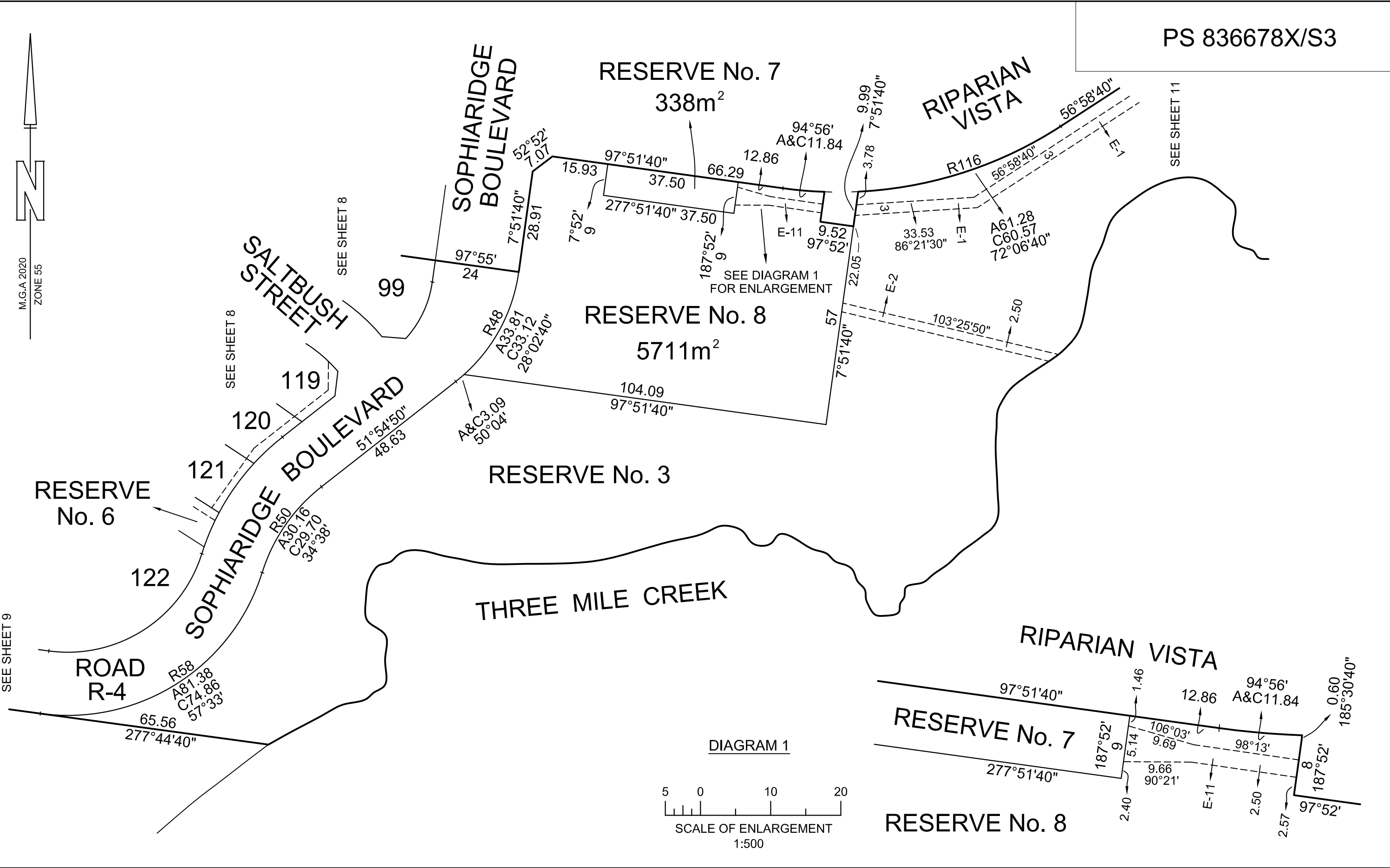
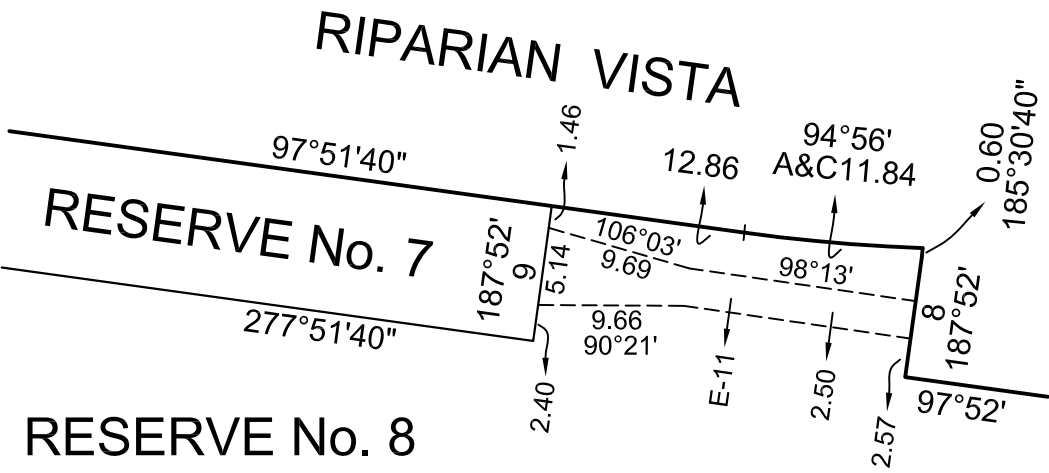
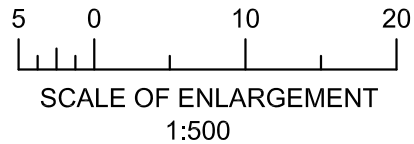


DIAGRAM 1

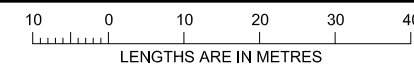


PO Box 2223
Echuca VIC 3564

Phone 03 5480 0688

stephen@nesd.com.au

Scale
1:1000



Original sheet
size A3

Sheet 10

STEPHEN MOLNAR, VERSION 1

