



Characterised by careful attention to detail and refined style, Banksia is a truly unique offering.





DESIGNED FOR CONTEMPORARY URBAN VILLAGE LIVING

Ideally located on the beach side of vibrant Cheltenham Village, this brand new development of 29 apartments delivers a sophisticated blend of stylish modern living, quality construction and environmentally efficient design.

Tailored to the local market, these quality residences feature refined detail and flexible floorplans, balanced with ground level commercial spaces.



REFINED LUXURY MEETS TIMELESS APPEAL

Banksia's interiors balance elegant style and practical liveability. Full height windows and soft, neutral colour palettes create light-filled and breathable interior spaces. A sense of warmth and subtle character is achieved by the use of oak timber flooring throughout the open plan living spaces, while clean minimalist-styled kitchens are fitted out with quality black Smeg appliances.

With a range of options from ground floor apartments up to penthouse residences, all with landscaped private outdoor spaces, Banksia offers a diverse selection of floorplans to suit individual living requirements.





ENVIRONMENTALLY RESPONSIBLE FEATURES

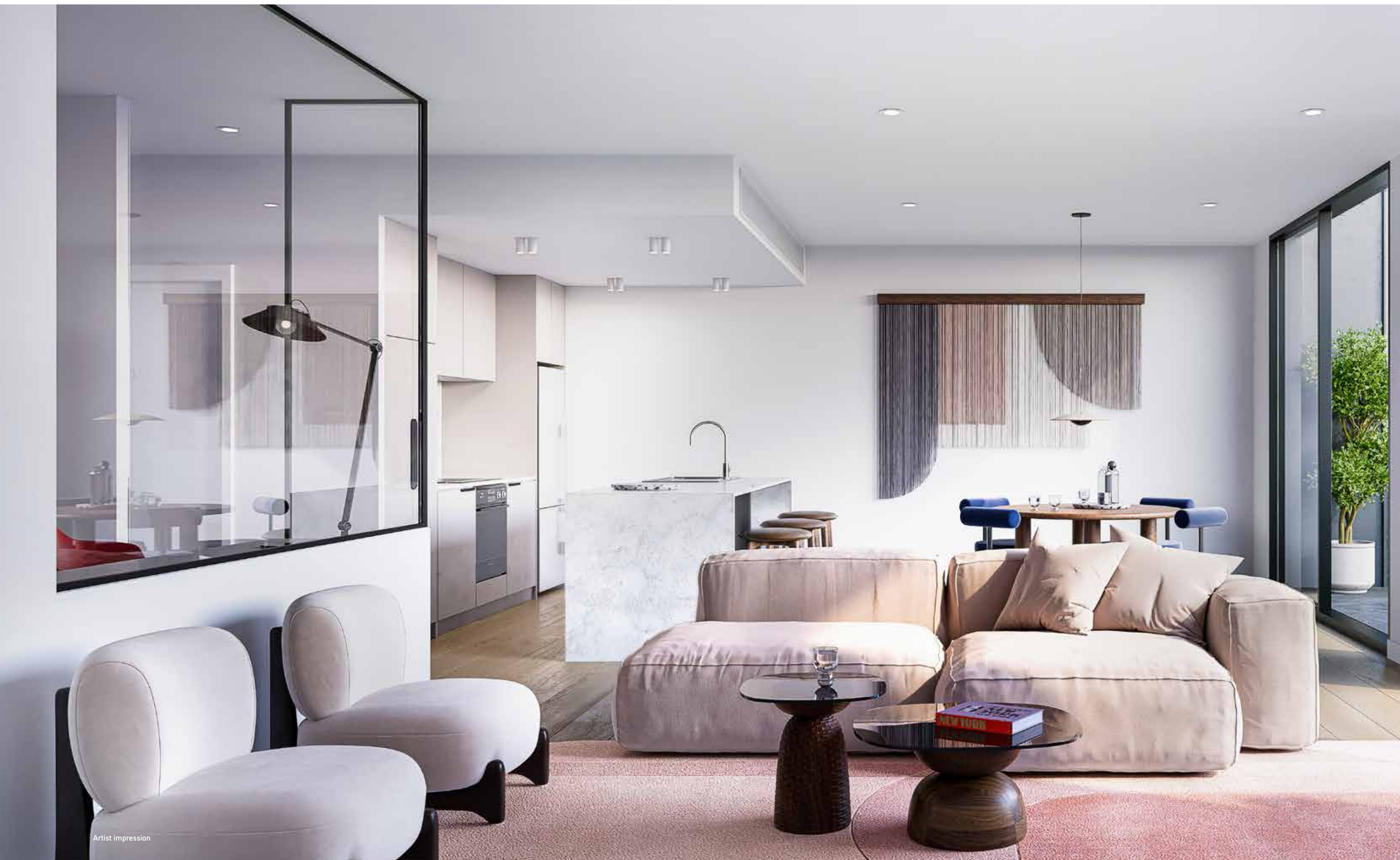
Designed to meet the latest standards in environmental sustainability, each residence incorporates energy efficient features, double glazed windows, integrated heating and cooling, as well as car charging facilities in the basement.





Artist impression





Artist impression



A LOCATION AND LIFESTYLE TO ENJOY ALL YEAR ROUND

Positioned between green open spaces, vibrant retail, diverse dining and convenient transport options, Banksia's enviable location is just minutes away from the very best that both Cheltenham and bayside Melbourne has to offer.

Southland Shopping Centre is located nearby while the stunning beaches of Mentone, Sandringham and Black Rock are just minutes away.

Established parklands, sporting reserves, world-class golf courses, community centres and some of the best colleges and education facilities, make Cheltenham such a desirable living locale.

A collaborative approach between Shenfield Property, Brayshaw Architects and interiors by Aldona Padjak Interior Design, Banksia achieves an unsurpassed level of urban living, respectfully integrated with its surrounds.



For over 20 years Shenfield Property has been an industry leader in designing and developing individual boutique energy efficient commercial and residential developments, without compromising quality.

Having successfully developed numerous residential projects in the local area, their vision has been honed to create solutions that not only compliment their surroundings, but improve them.

Committed to using the best materials and latest technologies, Shenfield Property strives to achieve the highest standards of environmental and sustainable living. As with every project their build quality is second to none.

OMNIA
Moorabbin



JASMIN
Hampton



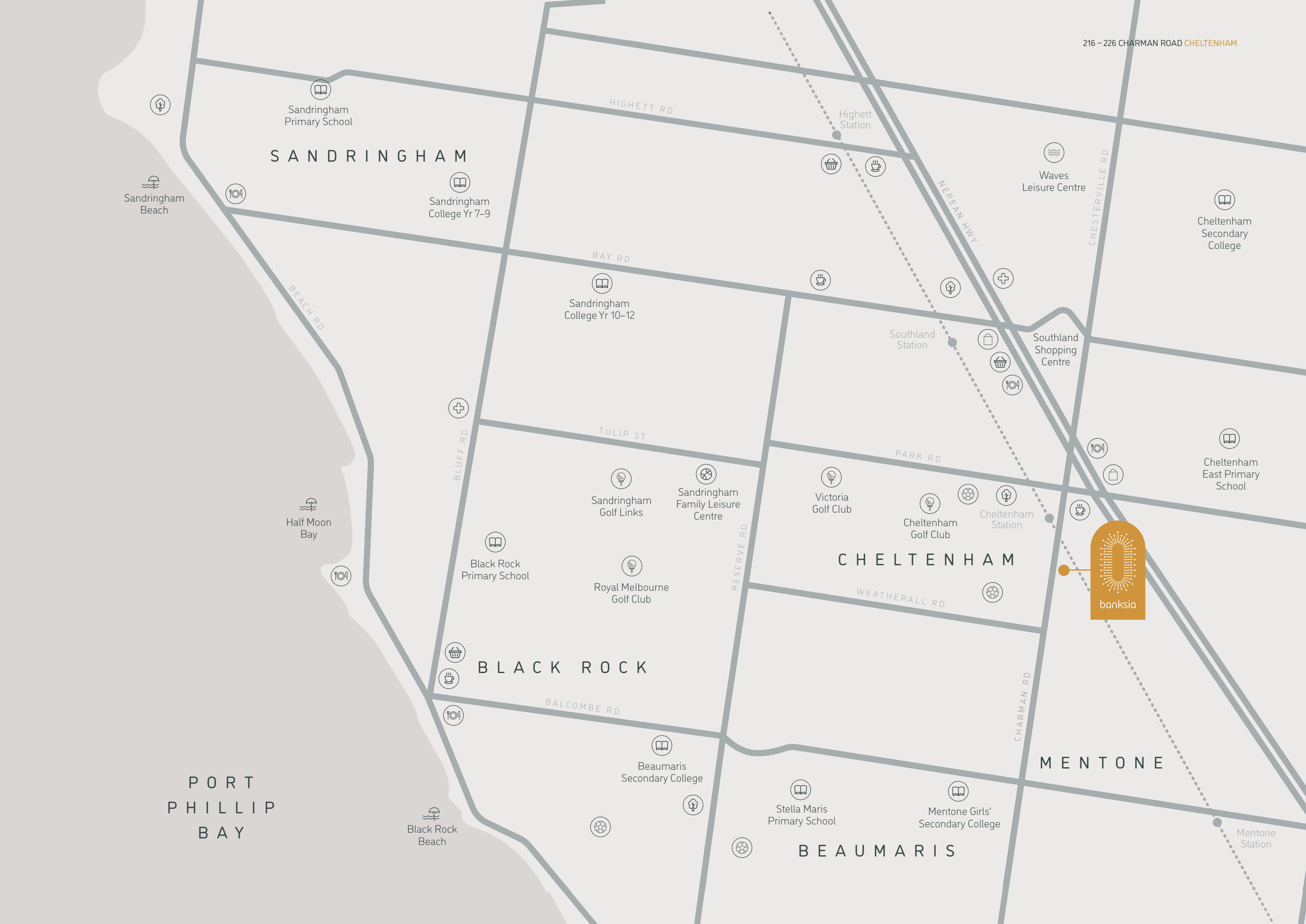


JOE'S QUARTER
Mordialloc



Cheltenham Station	280m
Cheltenham Shops	200m
Southland Shopping Centre	1.1km
Jack Barker Oval	450m
Cheltenham Park	800m
Cheltenham Secondary College	2.8km
Cheltenham East Primary School	1.9km
Mentone Grammar	3.5km
Mentone Girls' Secondary College	1.1km
Cheltenham Bowls Club	1.0km
Sandringham Hospital	3.8km
Leisure Centre	2.2km
Golf courses	1.4km
Mentone Beach	1.8km
Sandringham Beach	4.5km





216 – 226 CHARMAN ROAD CHELTENHAM

SANDRINGHAM

CHELTENHAM

BLACK ROCK

MENTONE

BEAUMARIS

PORT
PHILLIP
BAY

Sandringham
Primary School

Sandringham
College Yr 7–9

Sandringham
College Yr 10–12

Black Rock
Primary School

Royal Melbourne
Golf Club

Sandringham
Golf Links

Sandringham
Family Leisure
Centre

Victoria
Golf Club

Cheltenham
Golf Club

Cheltenham
Station

Beaumaris
Secondary College

Stella Maris
Primary School

Mentone Girls'
Secondary College

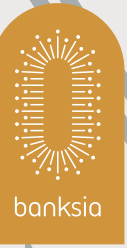
Cheltenham
Secondary
College

Cheltenham
East Primary
School

Waves
Leisure Centre

Southland
Shopping
Centre

Mentone
Station



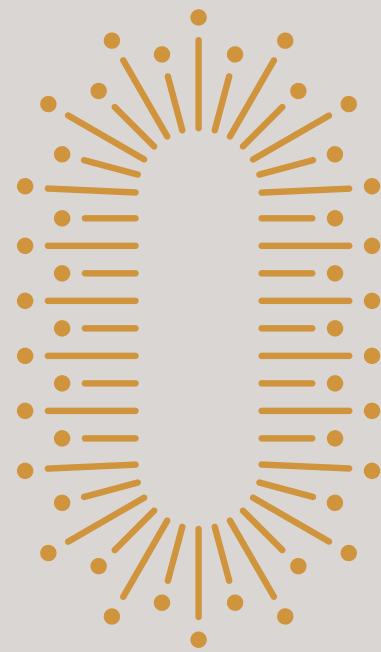
banksia









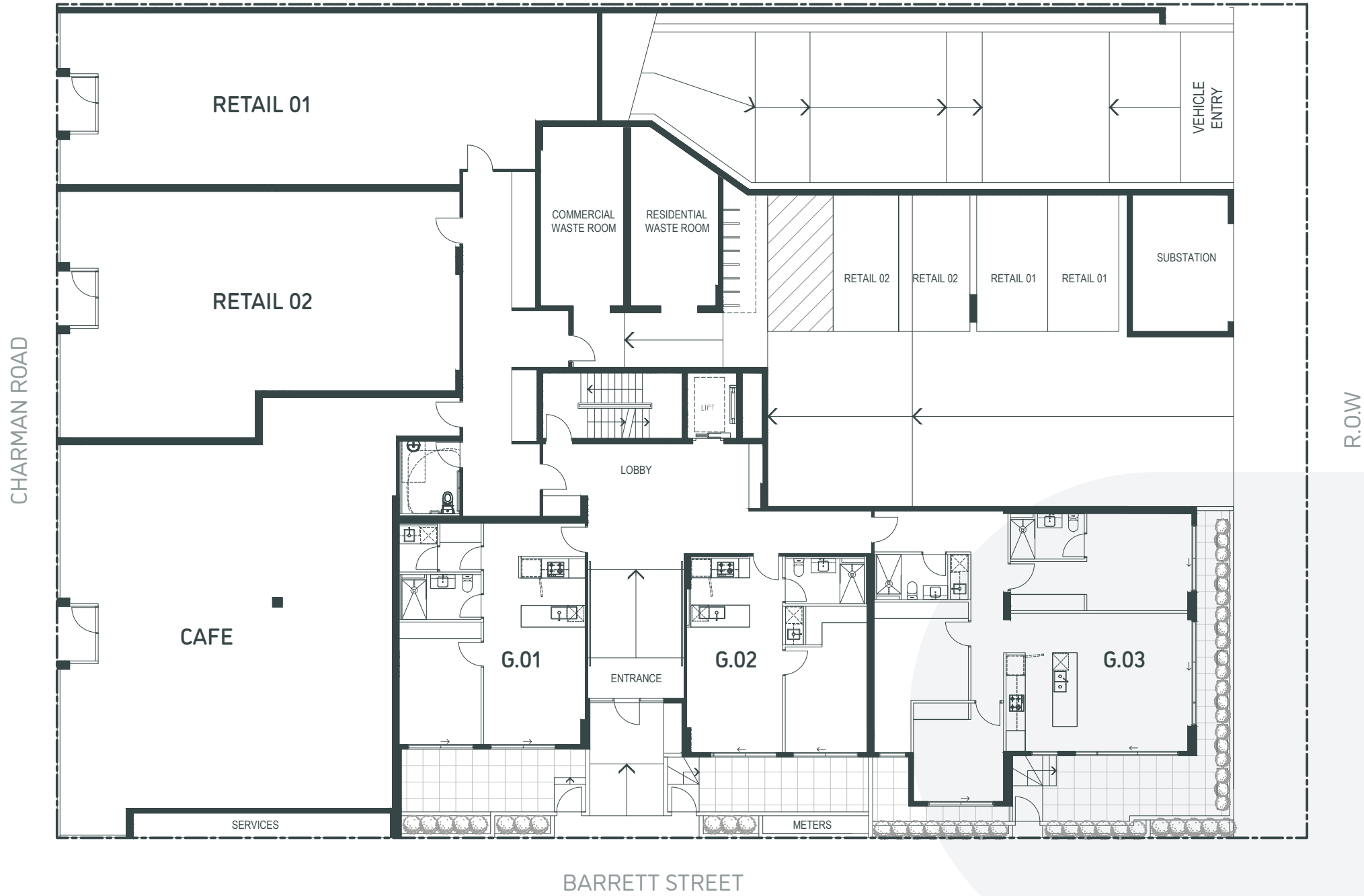


RESIDENCE PLANS

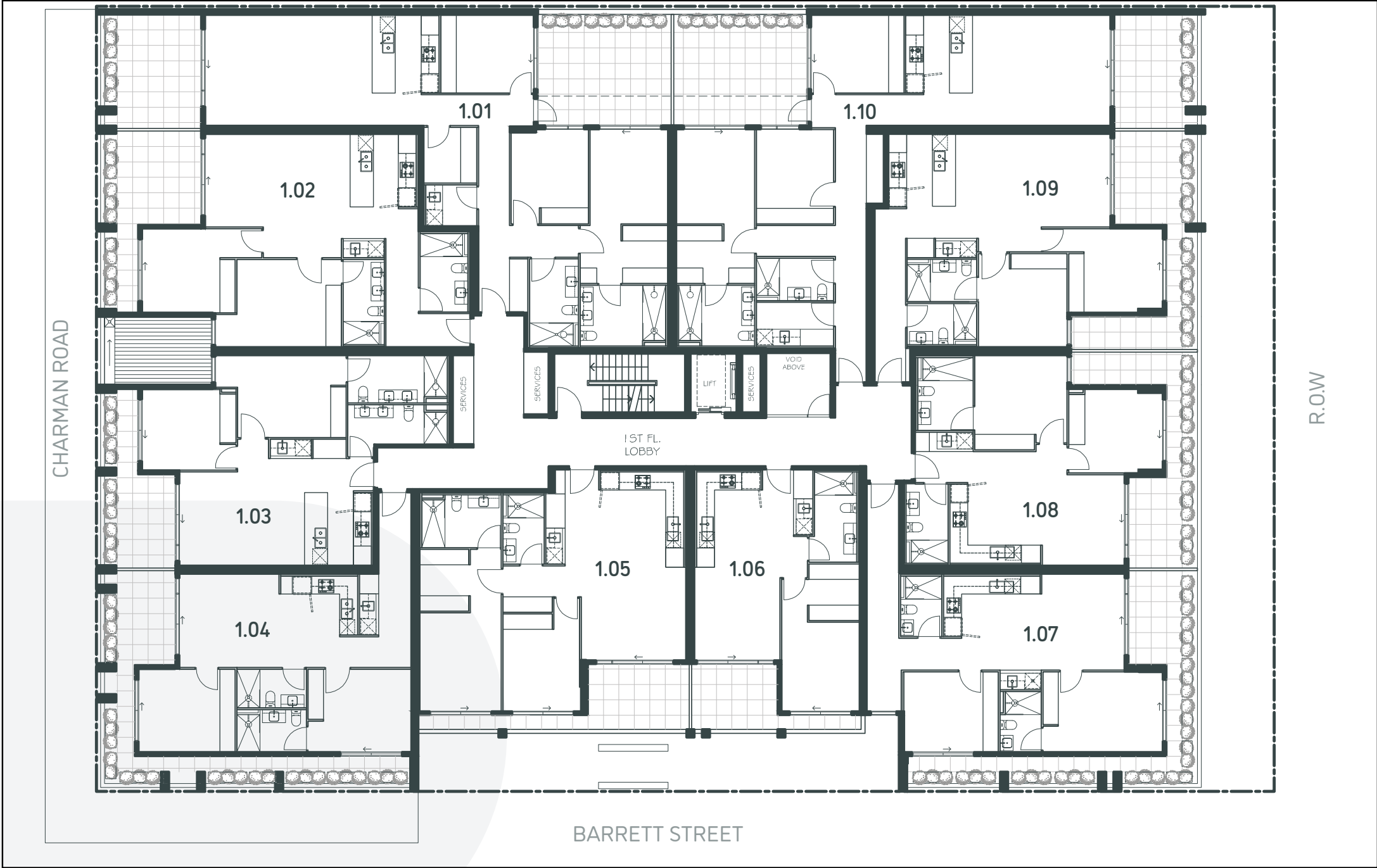
BASEMENT LEVEL



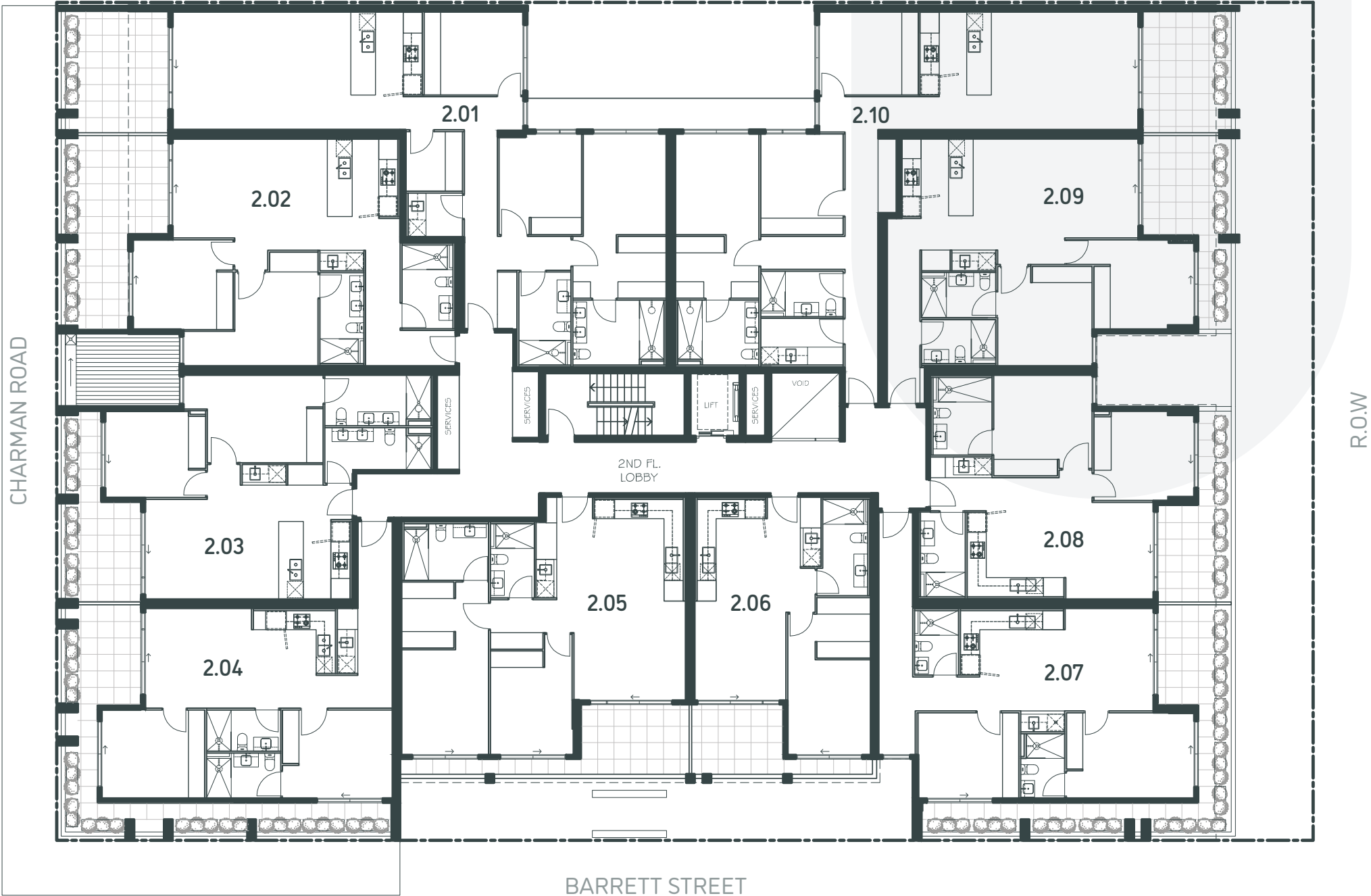
GROUND LEVEL



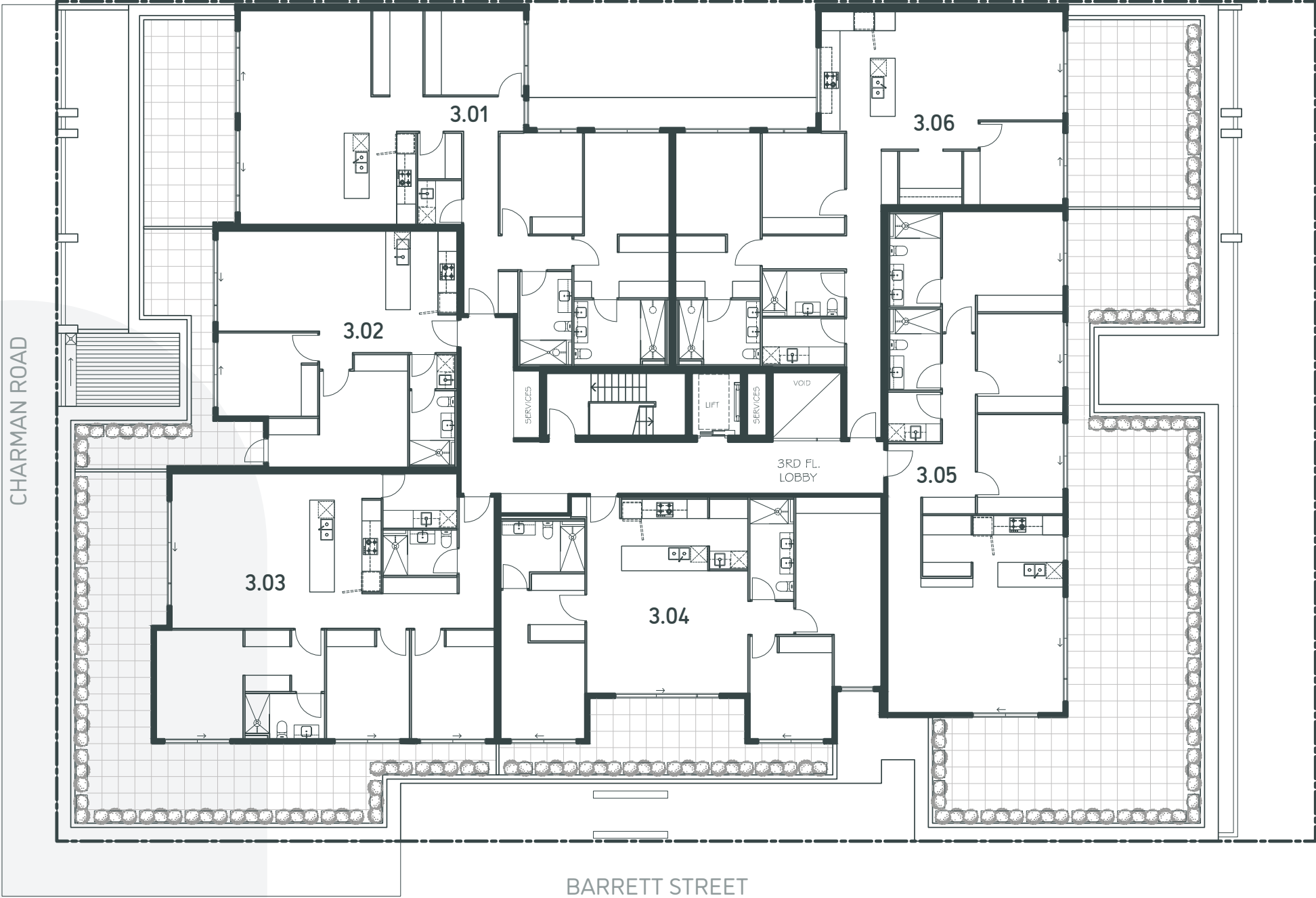
LEVEL 1



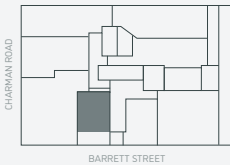
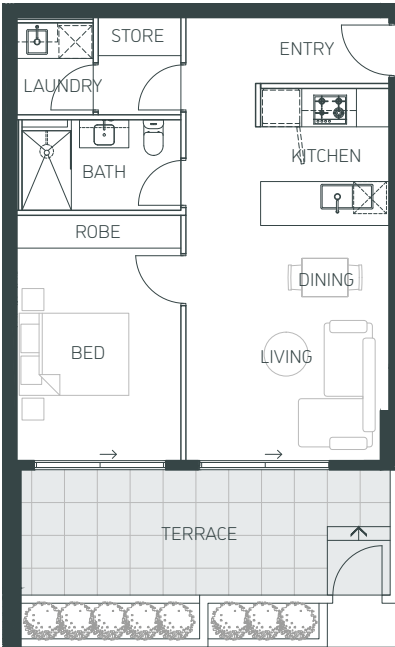
LEVEL 2



LEVEL 3



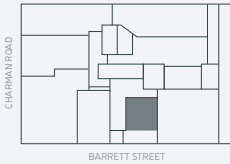
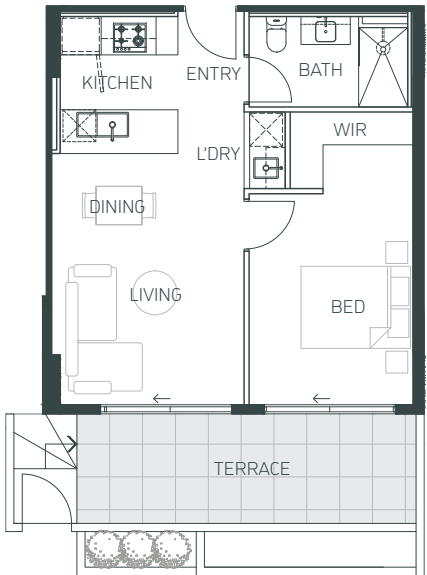
APARTMENT G.01



BED 1 | BATH 1 | CAR 1

INTERNAL SPACE:	59.0m ²
EXTERNAL SPACE:	18.0m ²
TOTAL:	77.0m ²

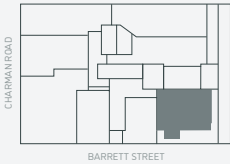
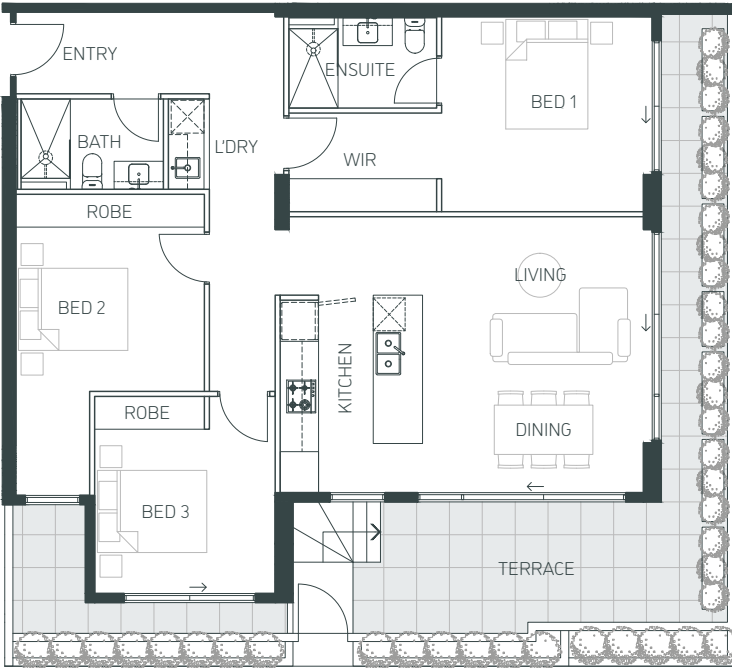
APARTMENT G.02



BED 1 | BATH 1 | CAR 1

INTERNAL SPACE:	51.0m ²
EXTERNAL SPACE:	14.5m ²
TOTAL:	65.6m ²

APARTMENT G.03



BED 3 | BATH 2 | CAR 2

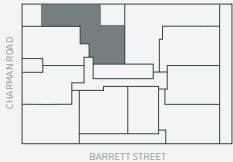
INTERNAL SPACE:	115.0m ²
EXTERNAL SPACE:	34.5m ²
TOTAL:	149.5m ²

APARTMENT 1.01

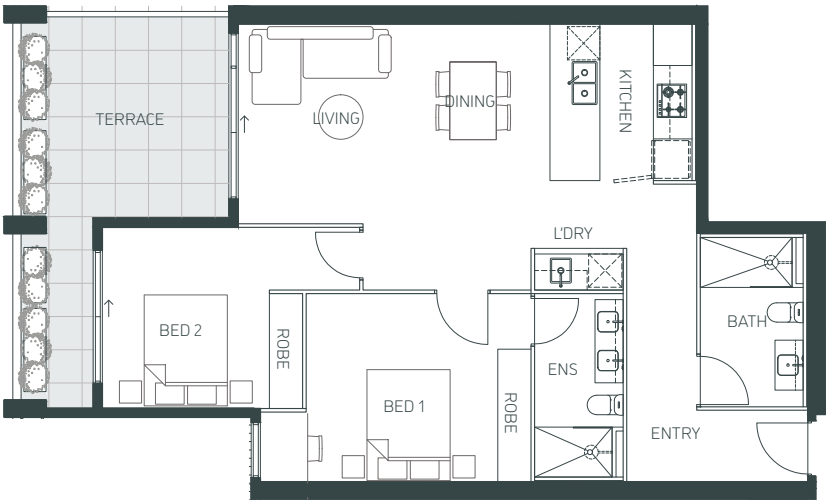


BED 3 | BATH 2 | CAR 2

INTERNAL SPACE:	132.5m ²
EXTERNAL SPACE:	38.5m ²
TOTAL:	171.0m ²

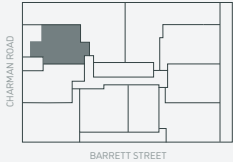


APARTMENT 1.02

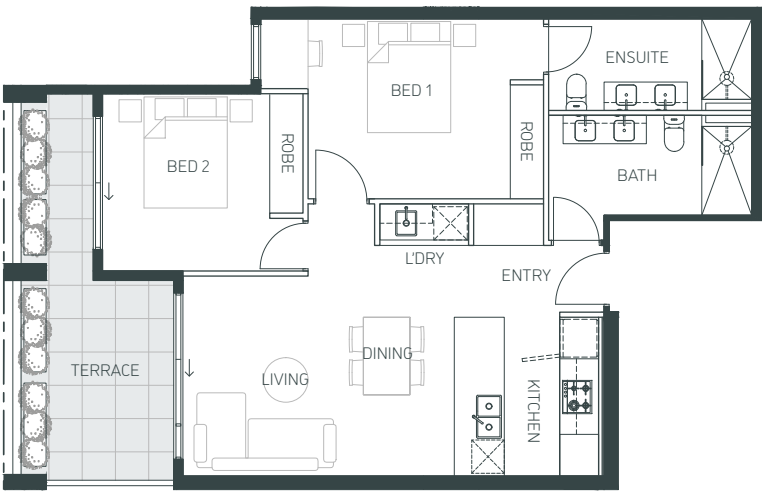


BED 2 | BATH 2 | CAR 1

INTERNAL SPACE:	91.0m ²
EXTERNAL SPACE:	18.0m ²
TOTAL:	109.0m ²

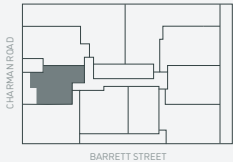


APARTMENT 1.03

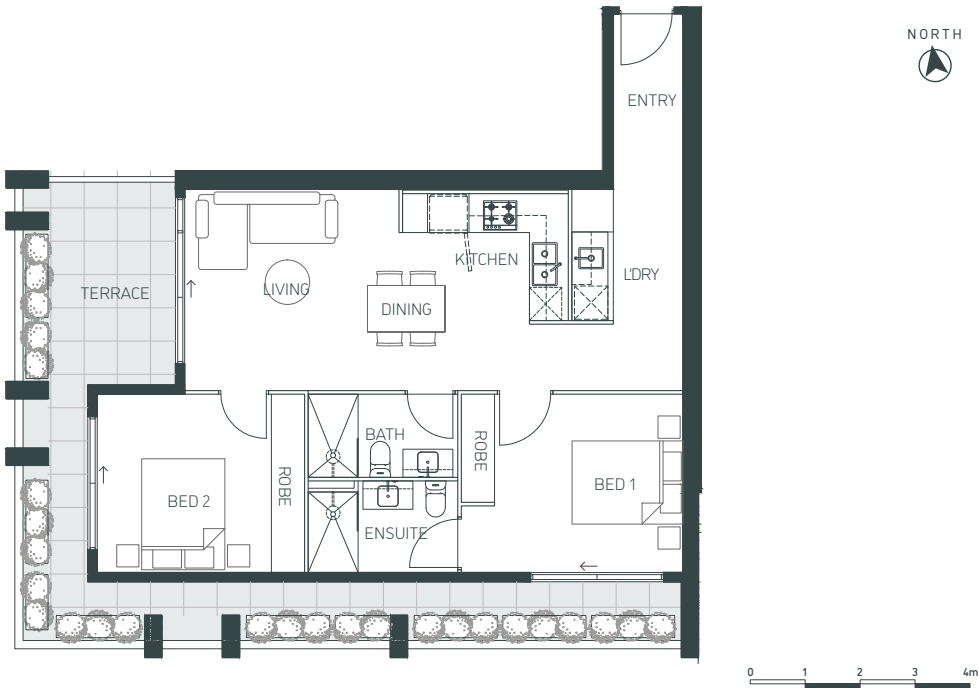


BED 2 | BATH 2 | CAR 1

INTERNAL SPACE:	80.0m ²
EXTERNAL SPACE:	14.0m ²
TOTAL:	94.0m ²

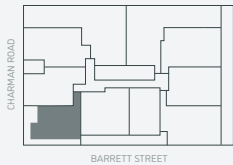


APARTMENT 1.04



BED 2 | BATH 2 | CAR 1

INTERNAL SPACE:	77.5m ²
EXTERNAL SPACE:	26.5m ²
TOTAL:	104.0m ²

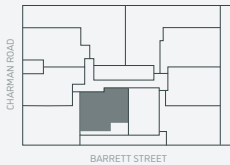


APARTMENT 1.05

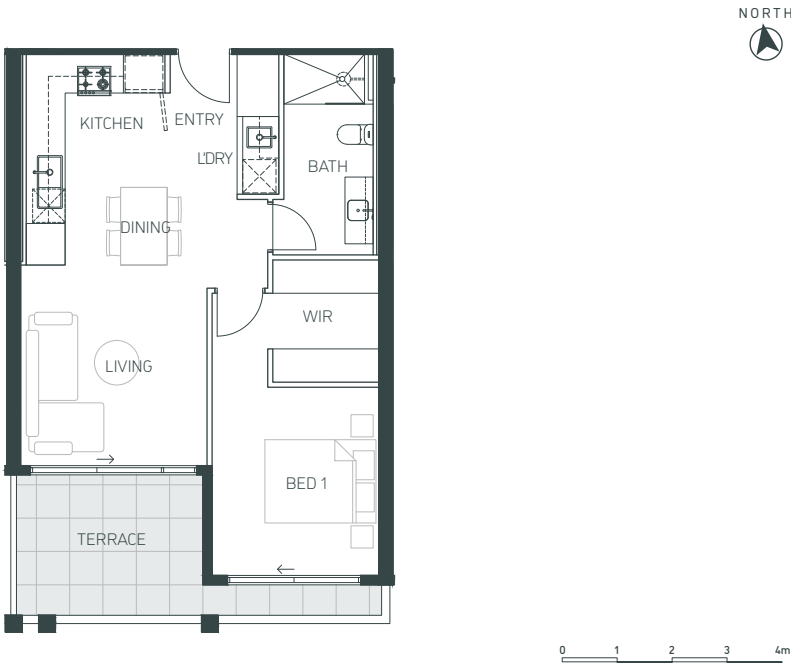


BED 2 | BATH 2 | CAR 1

INTERNAL SPACE:	90.0m ²
EXTERNAL SPACE:	13.5m ²
TOTAL:	103.5m ²

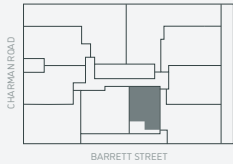


APARTMENT 1.06

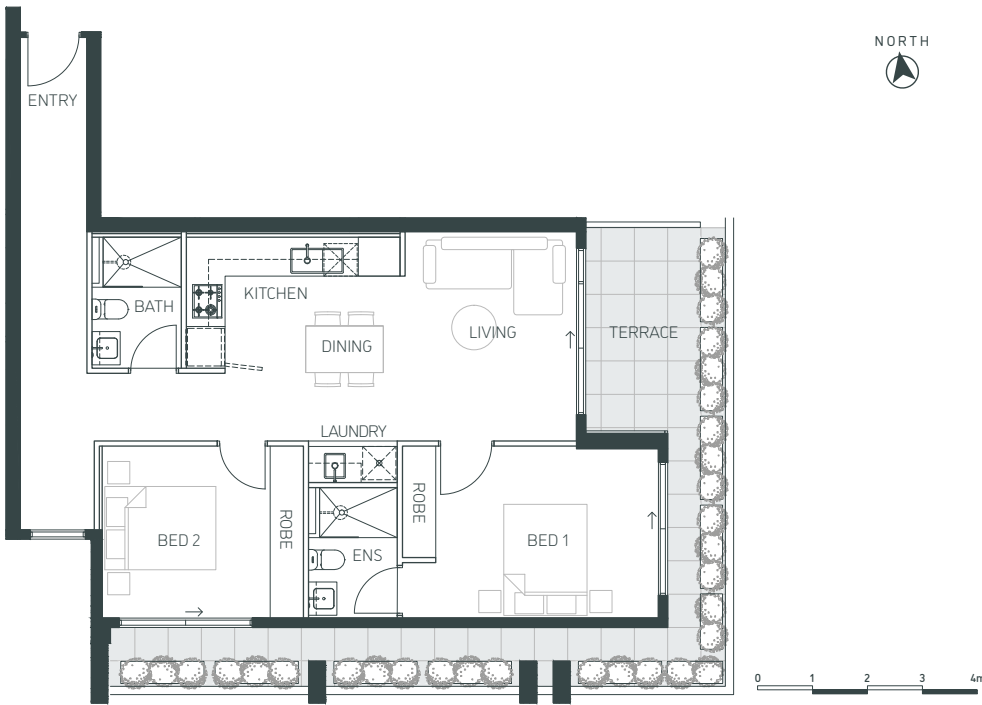


BED 1 | BATH 1 | CAR 1

INTERNAL SPACE:	58.0m ²
EXTERNAL SPACE:	10.0m ²
TOTAL:	68.0m ²

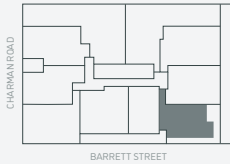


APARTMENT 1.07



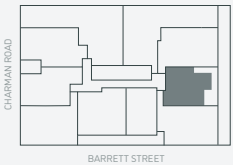
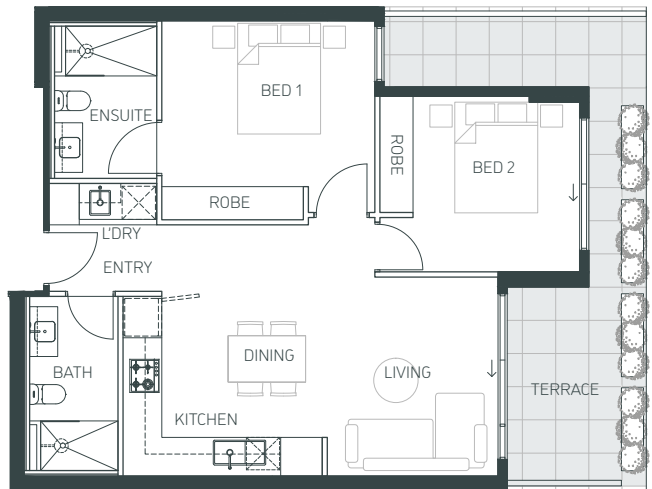
BED 2 | BATH 2 | CAR 1

INTERNAL SPACE:	82.5m ²
EXTERNAL SPACE:	24.5m ²
TOTAL:	107.0m ²



The information on this floor plan is believed to be correct but is not guaranteed. Dimensions and specifications are subject to change without notice, and may vary from the final build dimension. Area measurements have been taken from the centre line of party walls and the exterior of outside wall and include ducts.

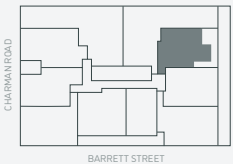
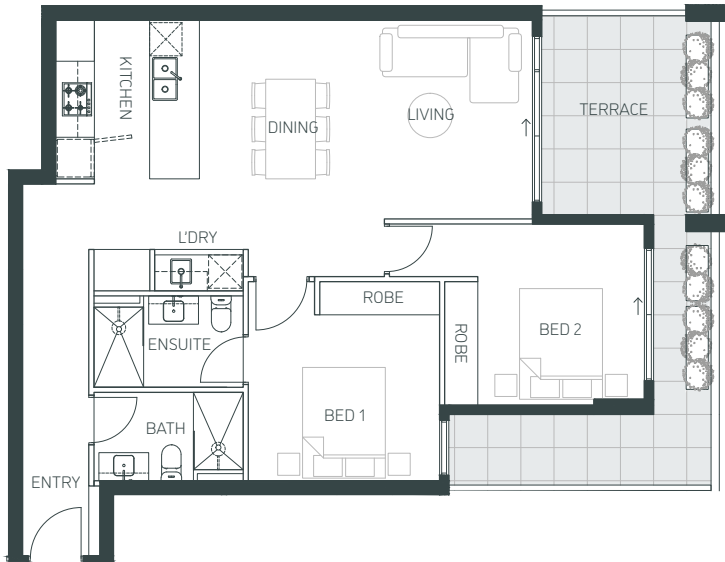
APARTMENT 1.08



BED 2 | BATH 2 | CAR 1

INTERNAL SPACE:	75.0m ²
EXTERNAL SPACE:	18.5m ²
TOTAL:	93.5m ²

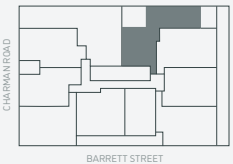
APARTMENT 1.09



BED 2 | BATH 2 | CAR 1

INTERNAL SPACE:	87.0m ²
EXTERNAL SPACE:	21.0m ²
TOTAL:	108.0m ²

APARTMENT 1.10



BED 3 | BATH 2 | CAR 2

INTERNAL SPACE:	125.5m ²
EXTERNAL SPACE:	35.5m ²
TOTAL:	161.0m ²

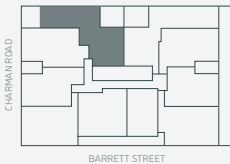
The information on this floor plan is believed to be correct but is not guaranteed. Dimensions and specifications are subject to change without notice, and may vary from the final build dimension. Area measurements have been taken from the centre line of party walls and the exterior of outside wall and include ducts.

APARTMENT 2.01

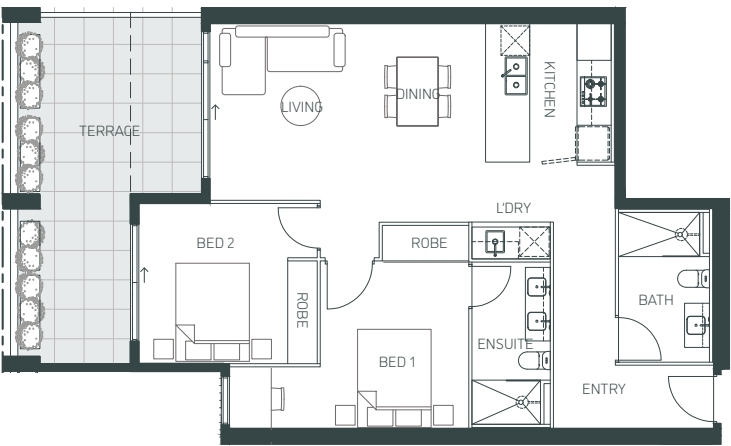


BED 3 | BATH 2 | CAR 2

INTERNAL SPACE:	132.5m ²
EXTERNAL SPACE:	16.5m ²
TOTAL:	149.0m ²

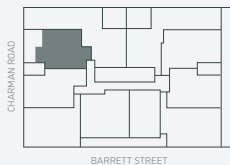


APARTMENT 2.02

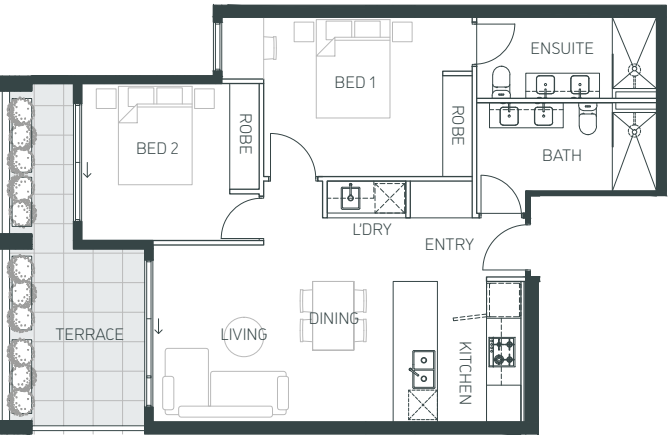


BED 2 | BATH 2 | CAR 1

INTERNAL SPACE:	87.0m ²
EXTERNAL SPACE:	21.5m ²
TOTAL:	108.5m ²

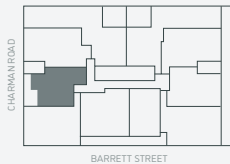


APARTMENT 2.03

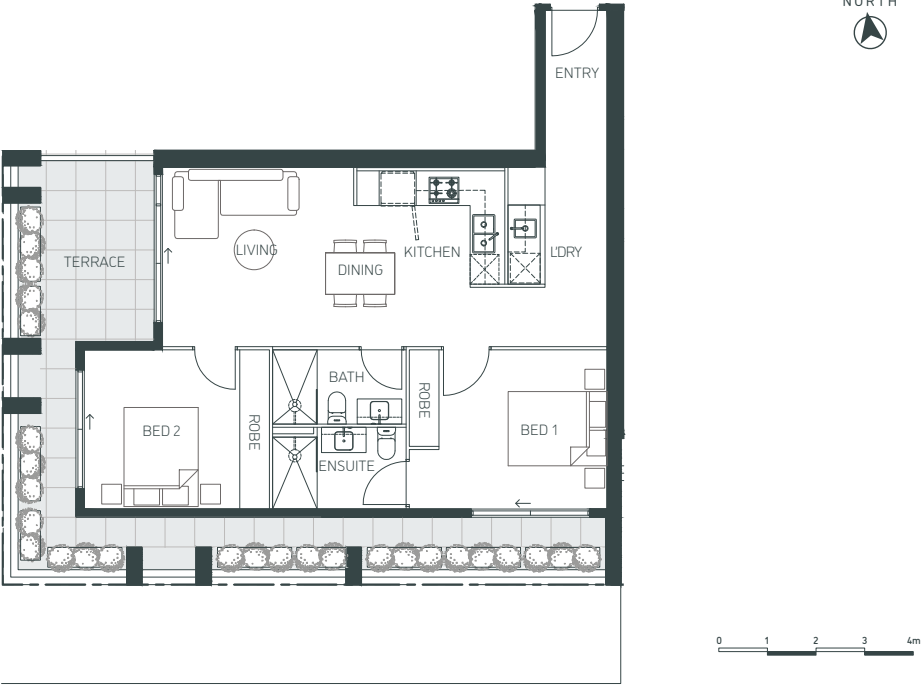


BED 2 | BATH 2 | CAR 1

INTERNAL SPACE:	80.0m ²
EXTERNAL SPACE:	14.0m ²
TOTAL:	94.0m ²

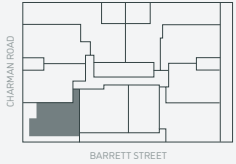


APARTMENT 2.04

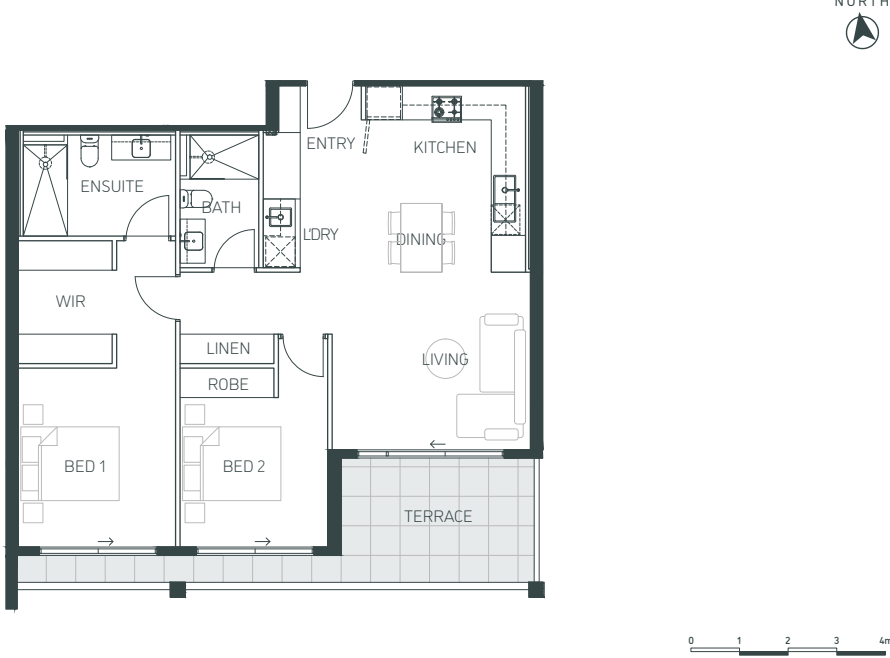


BED 2 | BATH 2 | CAR 1

INTERNAL SPACE:	77.5m ²
EXTERNAL SPACE:	26.5m ²
TOTAL:	104.0m ²

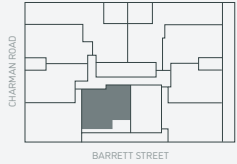


APARTMENT 2.05



BED 2 | BATH 2 | CAR 1

INTERNAL SPACE:	90.0m ²
EXTERNAL SPACE:	13.5m ²
TOTAL:	103.5m ²

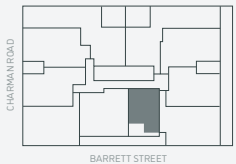


APARTMENT 2.06

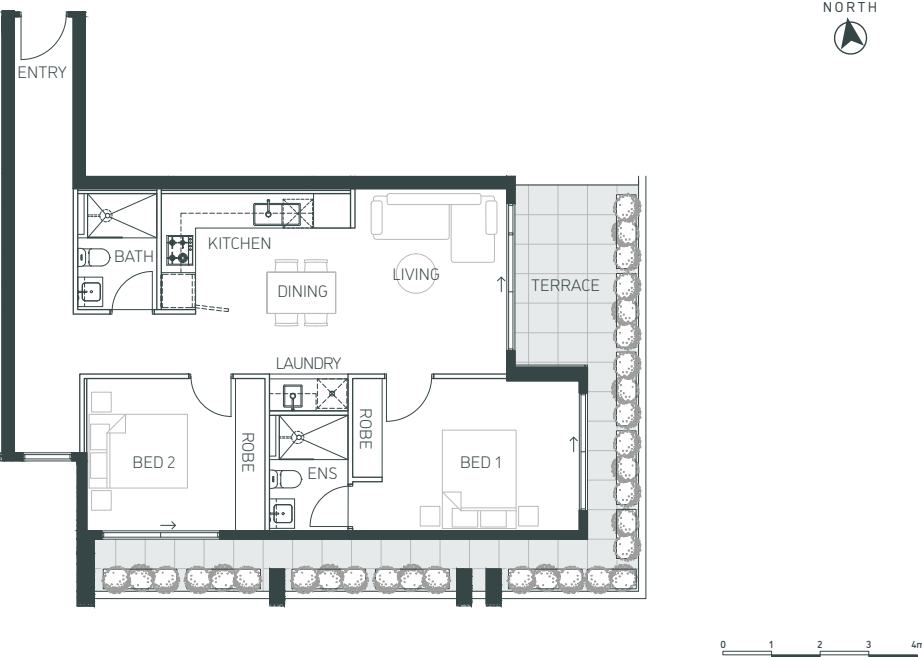


BED 1 | BATH 1 | CAR 1

INTERNAL SPACE:	58.0m ²
EXTERNAL SPACE:	10.0m ²
TOTAL:	68.0m ²

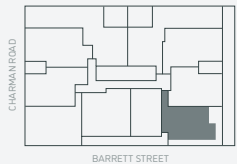


APARTMENT 2.07



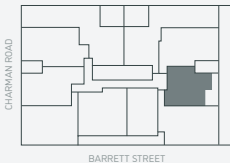
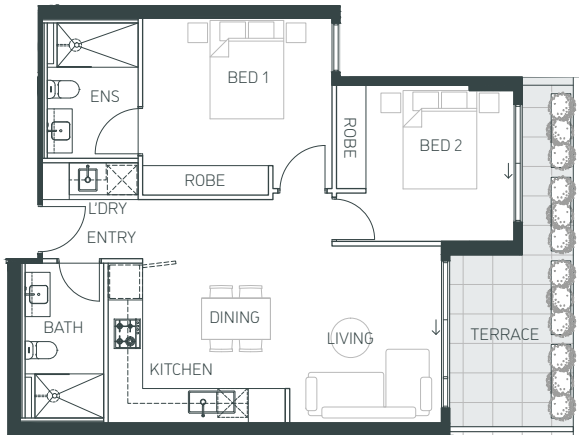
BED 2 | BATH 2 | CAR 1

INTERNAL SPACE:	82.5m ²
EXTERNAL SPACE:	24.5m ²
TOTAL:	107.0m ²



The information on this floor plan is believed to be correct but is not guaranteed. Dimensions and specifications are subject to change without notice, and may vary from the final build dimension. Area measurements have been taken from the centre line of party walls and the exterior of outside wall and include ducts.

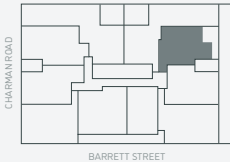
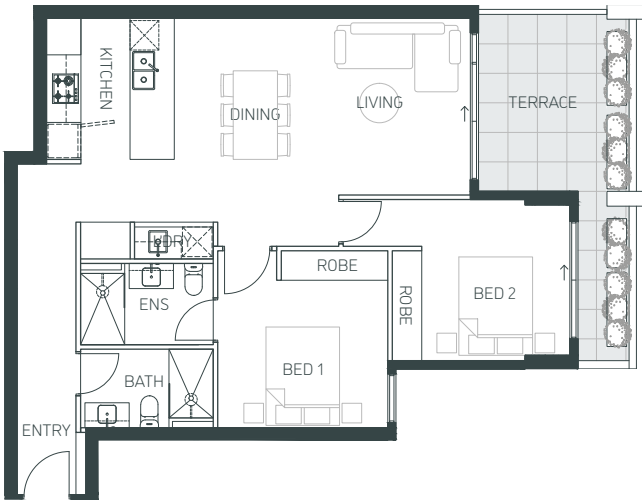
APARTMENT 2.08



BED 2 | BATH 2 | CAR 1

INTERNAL SPACE:	75.0m ²
EXTERNAL SPACE:	12.5m ²
TOTAL:	87.5m ²

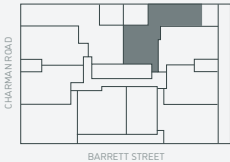
APARTMENT 2.09



BED 2 | BATH 2 | CAR 1

INTERNAL SPACE:	87.0m ²
EXTERNAL SPACE:	14.5m ²
TOTAL:	101.5m ²

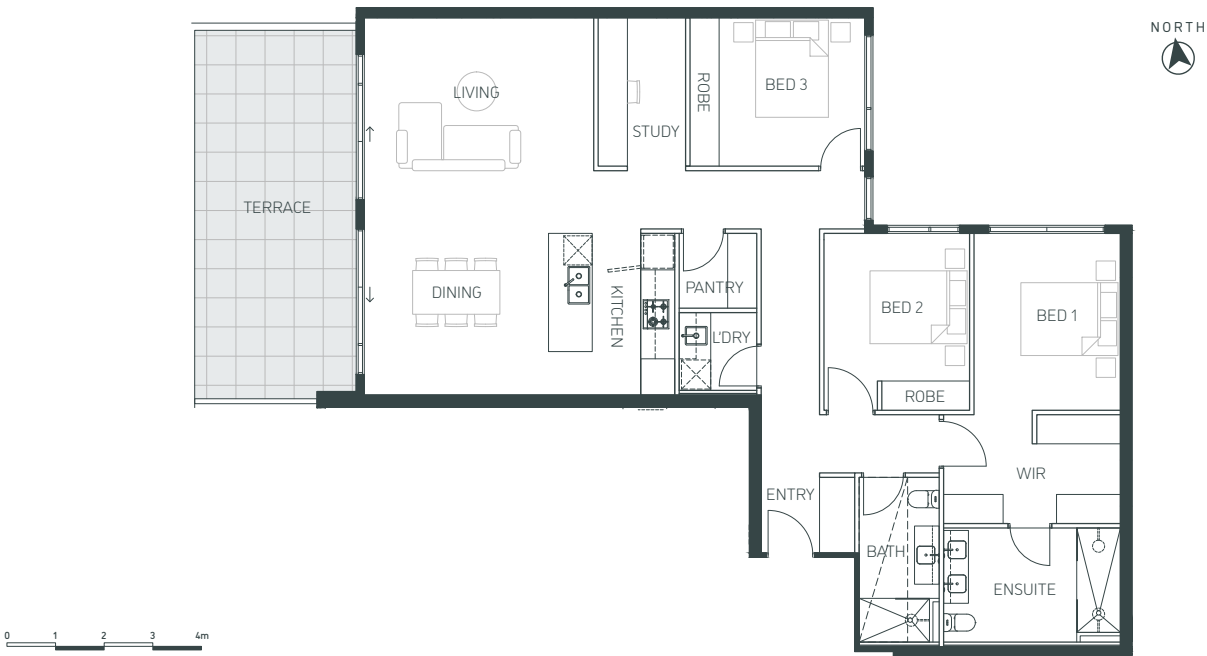
APARTMENT 2.10



BED 3 | BATH 2 | CAR 2

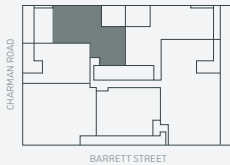
INTERNAL SPACE:	125.5m ²
EXTERNAL SPACE:	13.5m ²
TOTAL:	139.0m ²

APARTMENT 3.01

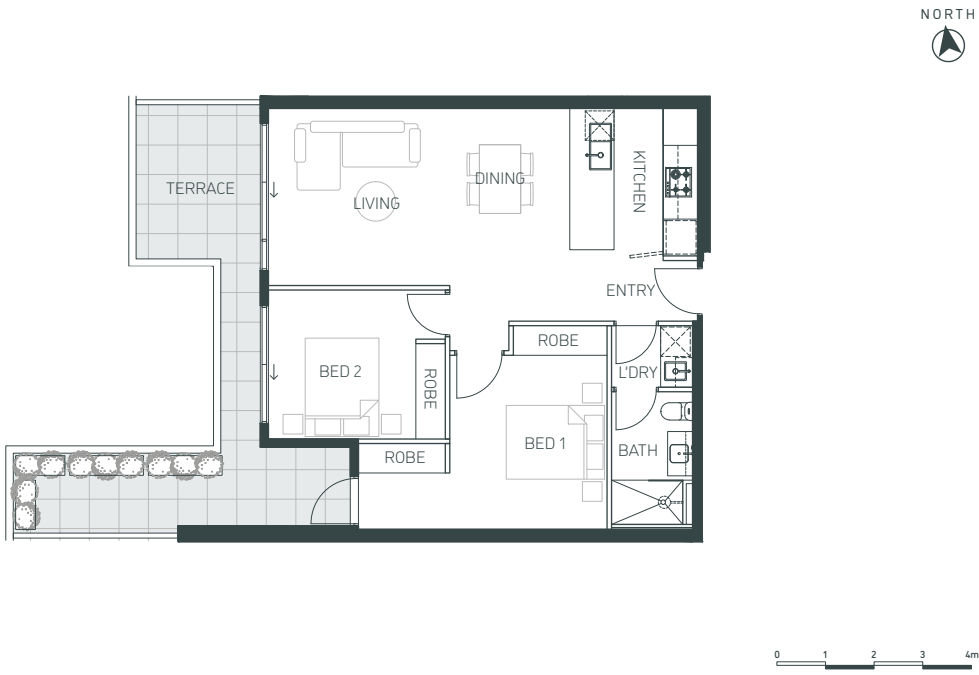


BED 3 | BATH 2 | CAR 2

INTERNAL SPACE:	140.0m ²
EXTERNAL SPACE:	25.0m ²
TOTAL:	165.0m ²

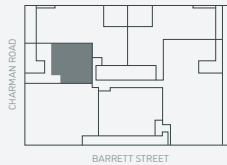


APARTMENT 3.02

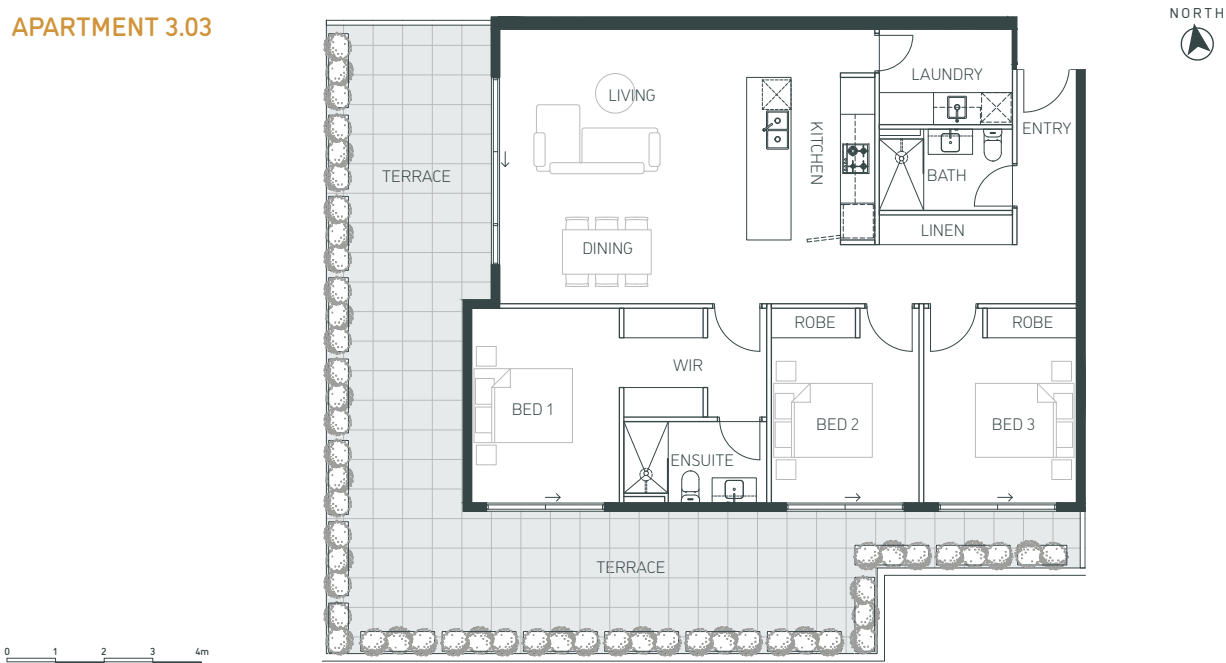


BED 2 | BATH 1 | CAR 1

INTERNAL SPACE:	76.0m ²
EXTERNAL SPACE:	22.0m ²
TOTAL:	98.0m ²

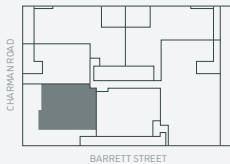


APARTMENT 3.03

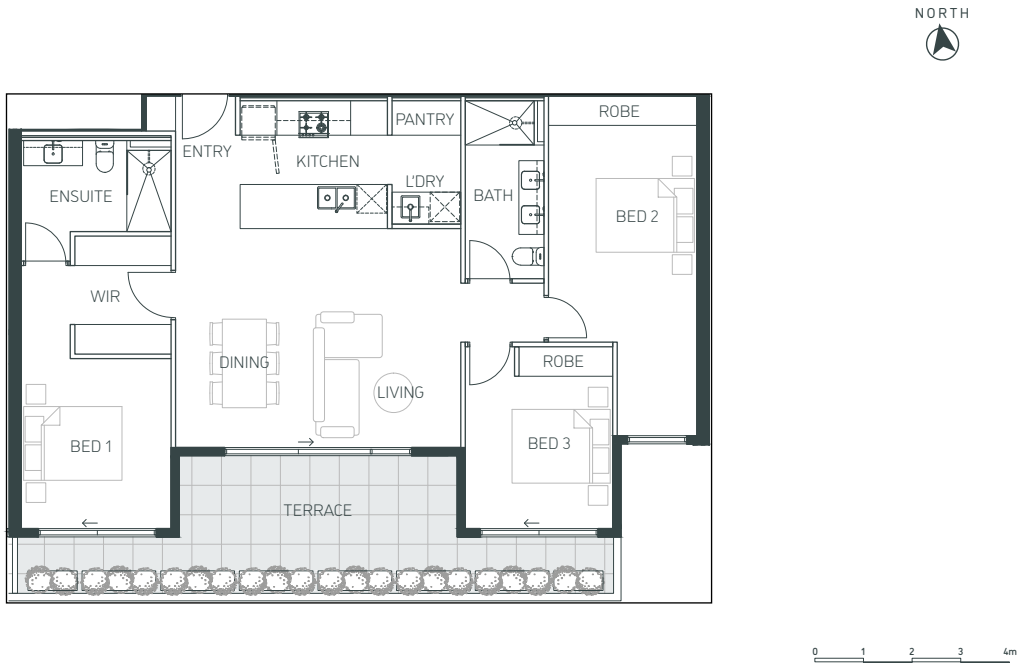


BED 3 | BATH 2 | CAR 2

INTERNAL SPACE:	120.0m ²
EXTERNAL SPACE:	67.5m ²
TOTAL:	187.5m ²

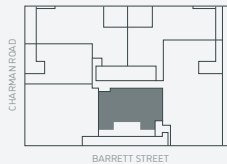


APARTMENT 3.04

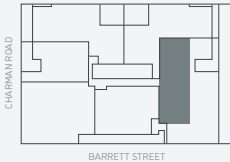
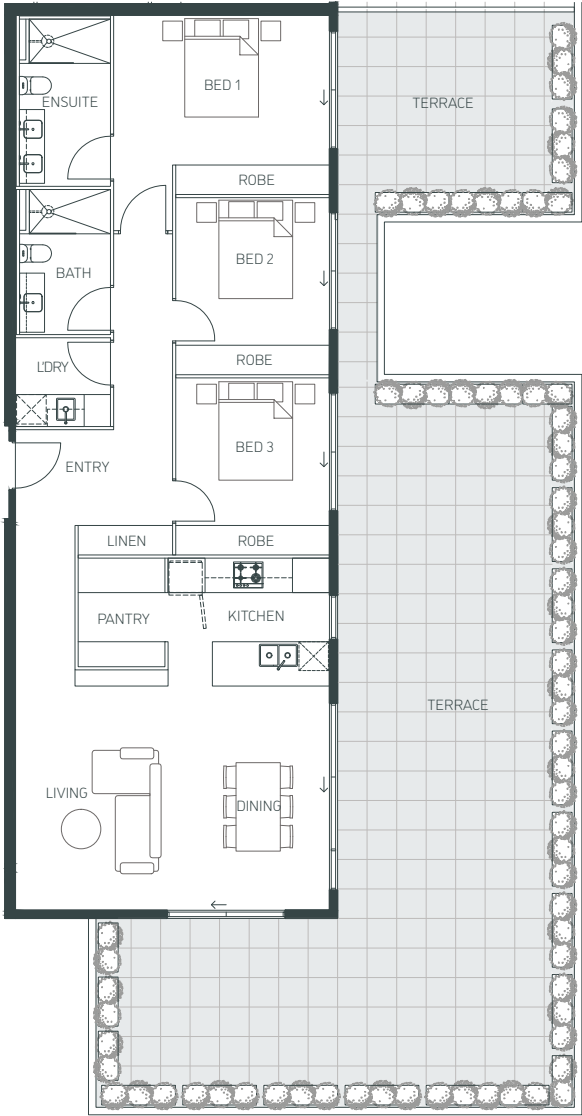


BED 3 | BATH 2 | CAR 2

INTERNAL SPACE:	112.0m ²
EXTERNAL SPACE:	23.0m ²
TOTAL:	135.0m ²



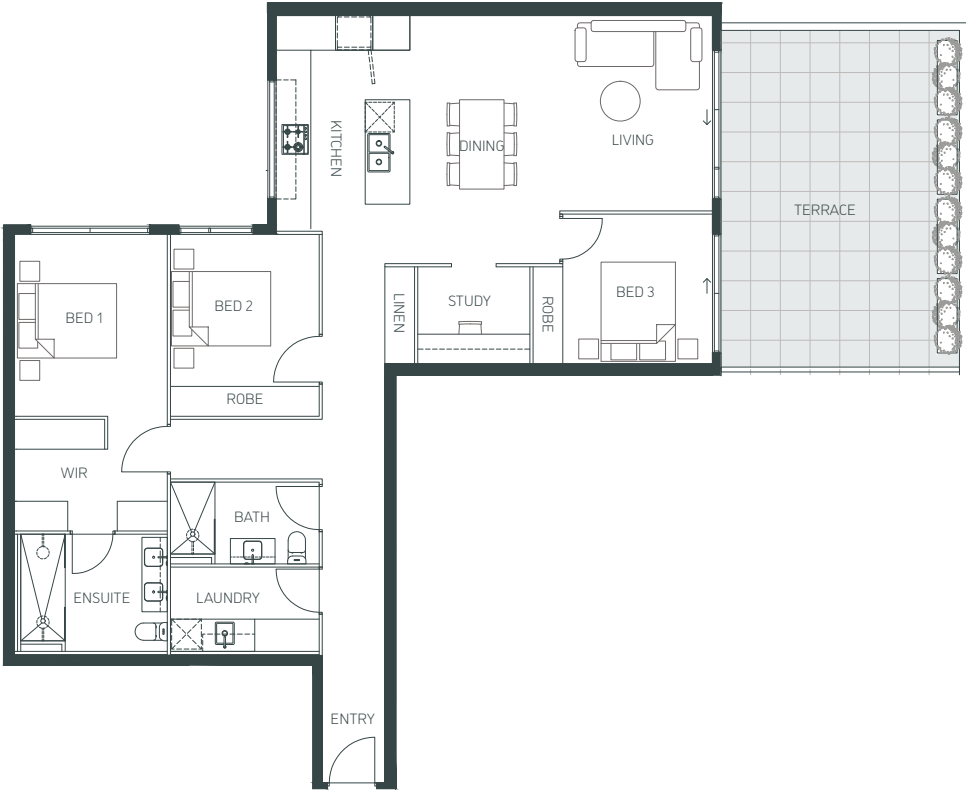
APARTMENT 3.05



BED 3 | BATH 2 | CAR 2

INTERNAL SPACE:	123.0m ²
EXTERNAL SPACE:	112.0m ²
TOTAL:	235.0m ²

APARTMENT 3.06



BED 3 | BATH 2 | CAR 2

INTERNAL SPACE:	130.5m ²
EXTERNAL SPACE:	32.5m ²
TOTAL:	163.0m ²

