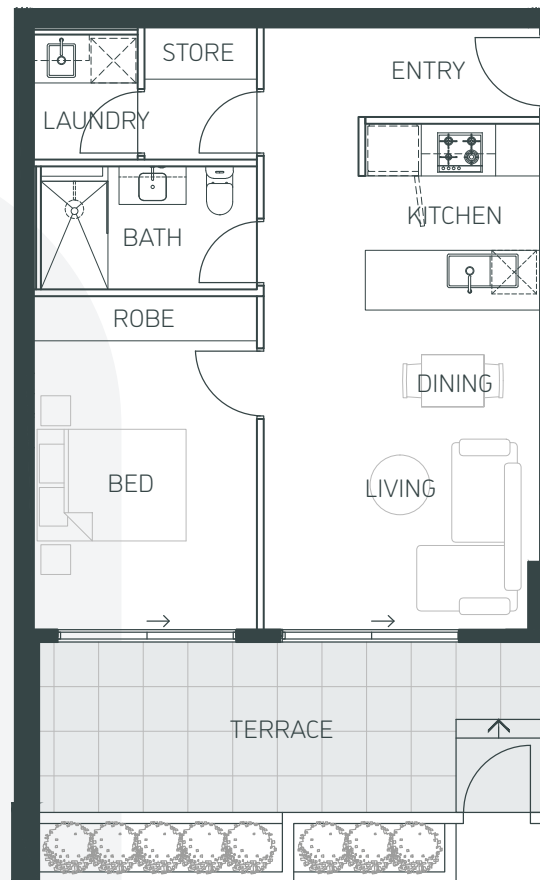




## APARTMENT G.01

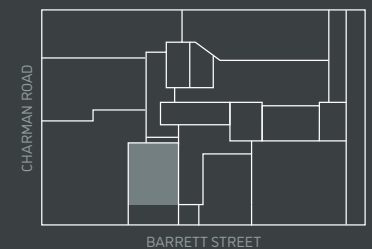


banksia

BED 1 | BATH 1 | CAR 1

INTERNAL SPACE:	59.0m <sup>2</sup>
EXTERNAL SPACE:	18.0m <sup>2</sup>
TOTAL:	77.0m <sup>2</sup>

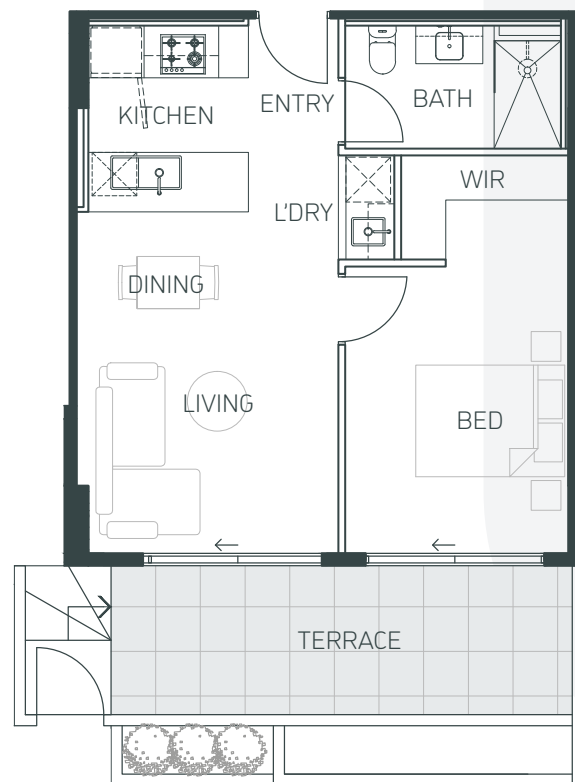
LOCATION PLAN



The information on this floor plan is believed to be correct but is not guaranteed. Dimensions and specifications are subject to change without notice, and may vary from the final build dimension. Area measurements have been taken from the centre line of party walls and the exterior of outside wall and include ducts.



## APARTMENT G.02

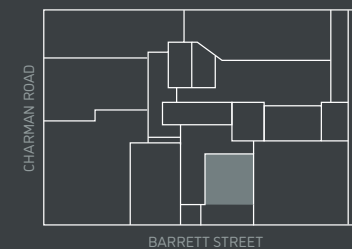


banksia

BED 1 | BATH 1 | CAR 1

INTERNAL SPACE:	51.0m <sup>2</sup>
EXTERNAL SPACE:	14.5m <sup>2</sup>
TOTAL:	65.6m <sup>2</sup>

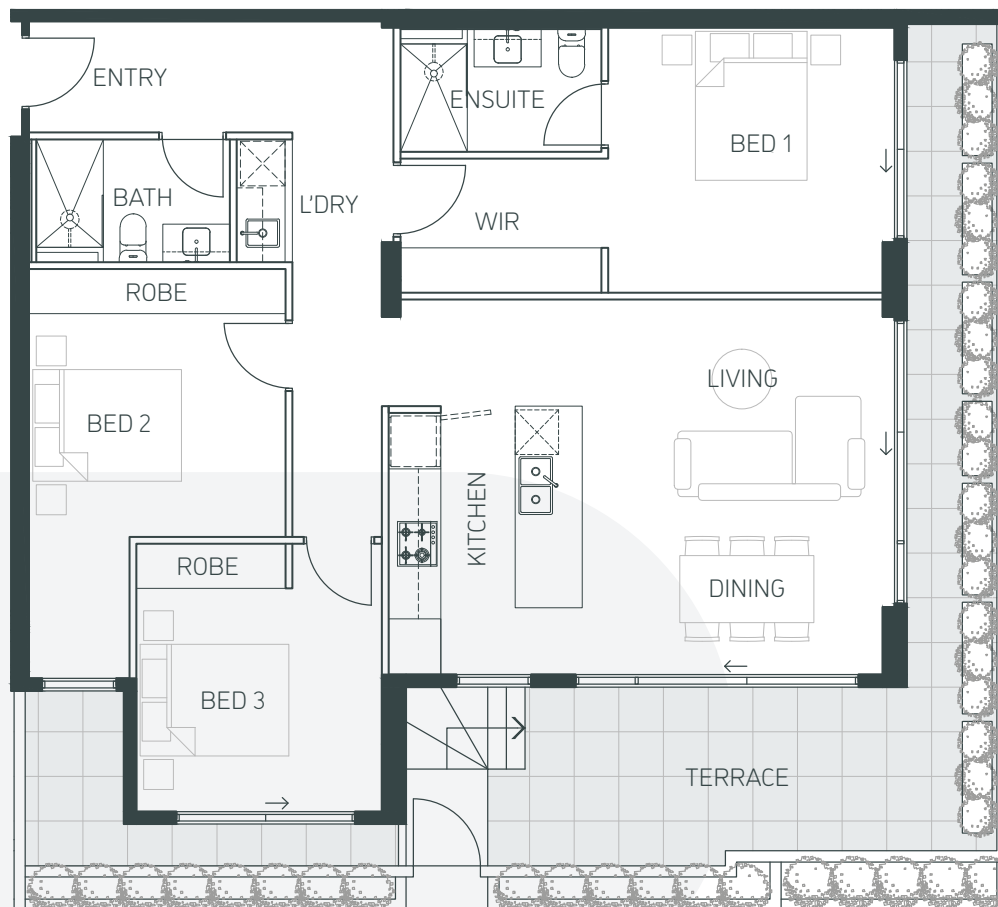
LOCATION PLAN



The information on this floor plan is believed to be correct but is not guaranteed. Dimensions and specifications are subject to change without notice, and may vary from the final build dimension. Area measurements have been taken from the centre line of party walls and the exterior of outside wall and include ducts.



## APARTMENT G.03

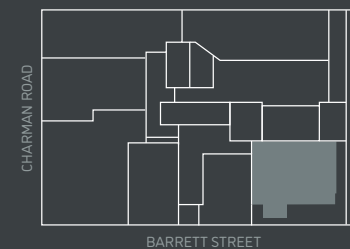


banksia

BED 3 | BATH 2 | CAR 2

INTERNAL SPACE:	115.0m <sup>2</sup>
EXTERNAL SPACE:	34.5m <sup>2</sup>
TOTAL:	149.5m <sup>2</sup>

### LOCATION PLAN



The information on this floor plan is believed to be correct but is not guaranteed. Dimensions and specifications are subject to change without notice, and may vary from the final build dimension. Area measurements have been taken from the centre line of party walls and the exterior of outside wall and include ducts.



## APARTMENT 1.01

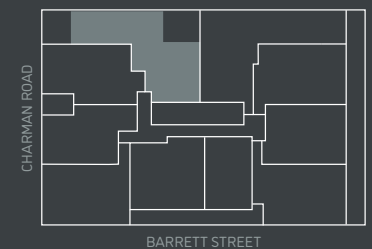


banksia

BED 3 | BATH 2 | CAR 2

INTERNAL SPACE:	133.5m <sup>2</sup>
EXTERNAL SPACE:	38.5m <sup>2</sup>
TOTAL:	172.0m <sup>2</sup>

### LOCATION PLAN



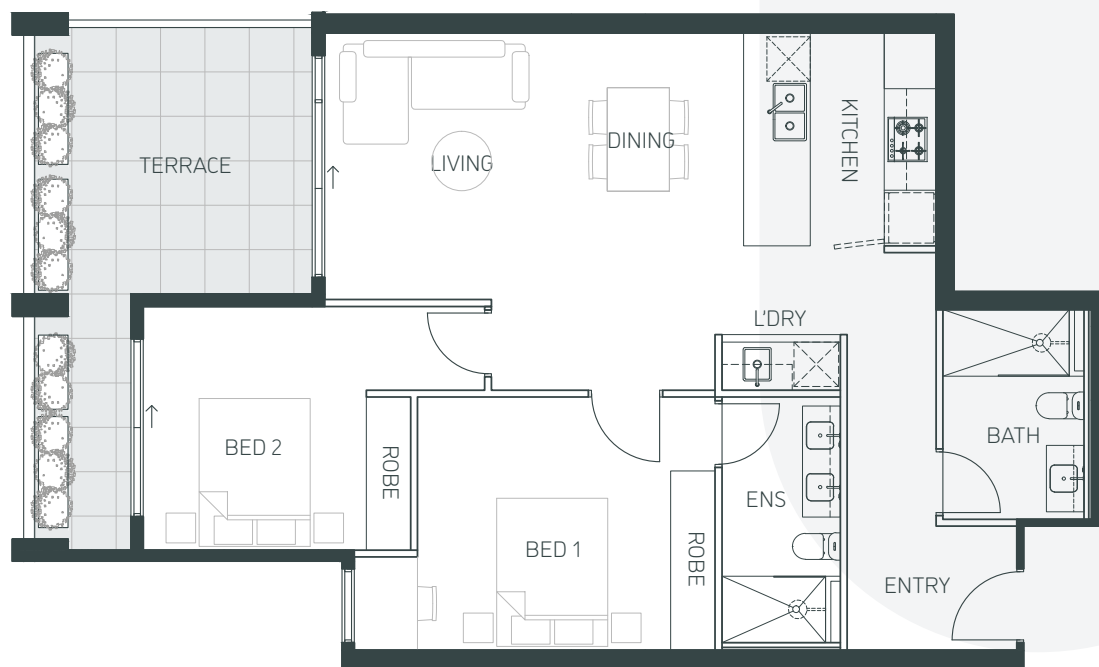
The information on this floor plan is believed to be correct but is not guaranteed. Dimensions and specifications are subject to change without notice, and may vary from the final build dimension. Area measurements have been taken from the centre line of party walls and the exterior of outside wall and include ducts.



## APARTMENT 1.02



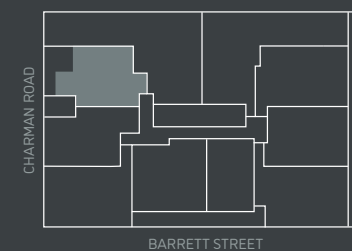
banksia



BED 2 | BATH 2 | CAR 1

INTERNAL SPACE:	90.0m <sup>2</sup>
EXTERNAL SPACE:	18.0m <sup>2</sup>
TOTAL:	108.0m <sup>2</sup>

LOCATION PLAN



The information on this floor plan is believed to be correct but is not guaranteed. Dimensions and specifications are subject to change without notice, and may vary from the final build dimension. Area measurements have been taken from the centre line of party walls and the exterior of outside wall and include ducts.



# APARTMENT 1.03

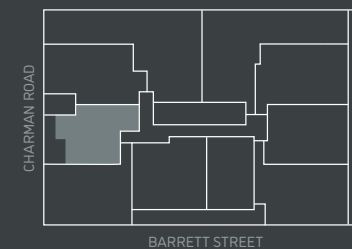


banksia

BED 2 | BATH 2 | CAR 1

INTERNAL SPACE:	80.0m <sup>2</sup>
EXTERNAL SPACE:	14.0m <sup>2</sup>
TOTAL:	94.0m <sup>2</sup>

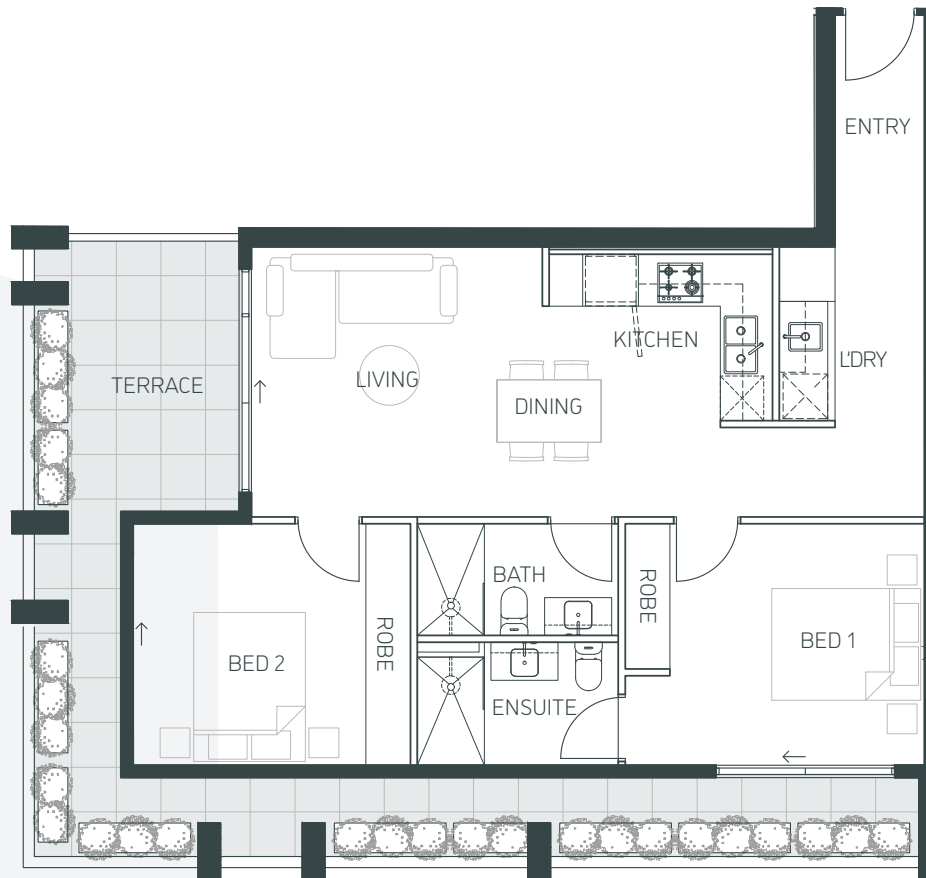
LOCATION PLAN



The information on this floor plan is believed to be correct but is not guaranteed. Dimensions and specifications are subject to change without notice, and may vary from the final build dimension. Area measurements have been taken from the centre line of party walls and the exterior of outside wall and include ducts.



## APARTMENT 1.04

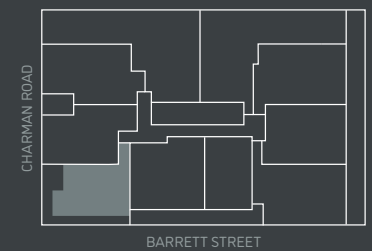


banksia

BED 2 | BATH 2 | CAR 1

INTERNAL SPACE:	77.5m <sup>2</sup>
EXTERNAL SPACE:	26.5m <sup>2</sup>
TOTAL:	104.0m <sup>2</sup>

### LOCATION PLAN



The information on this floor plan is believed to be correct but is not guaranteed. Dimensions and specifications are subject to change without notice, and may vary from the final build dimension. Area measurements have been taken from the centre line of party walls and the exterior of outside wall and include ducts.



# APARTMENT 1.05

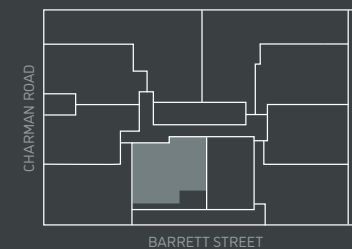


banksia

BED 2 | BATH 2 | CAR 1

INTERNAL SPACE:	90.0m <sup>2</sup>
EXTERNAL SPACE:	13.5m <sup>2</sup>
TOTAL:	103.5m <sup>2</sup>

LOCATION PLAN

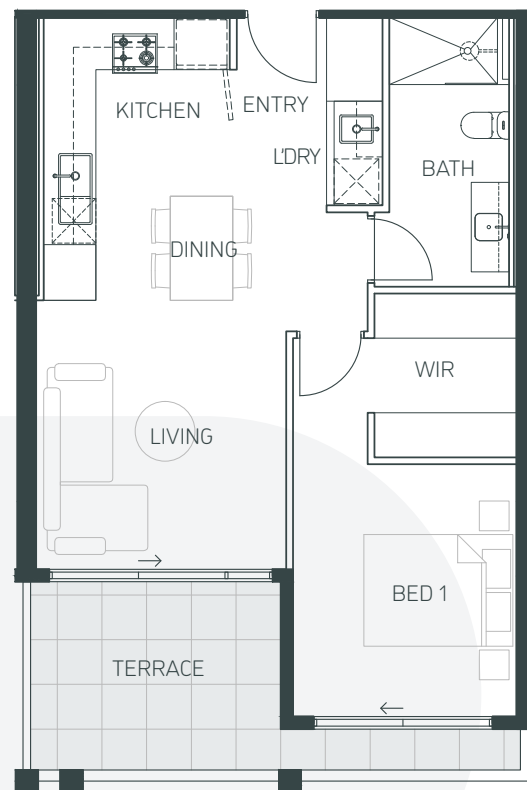


The information on this floor plan is believed to be correct but is not guaranteed. Dimensions and specifications are subject to change without notice, and may vary from the final build dimension. Area measurements have been taken from the centre line of party walls and the exterior of outside wall and include ducts.





## APARTMENT 1.06

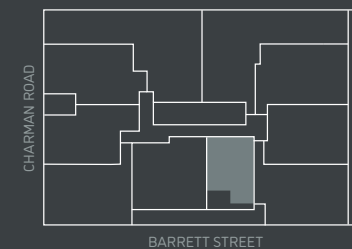


banksia

BED 1 | BATH 1 | CAR 1

INTERNAL SPACE:	58.0m <sup>2</sup>
EXTERNAL SPACE:	10.0m <sup>2</sup>
TOTAL:	68.0m <sup>2</sup>

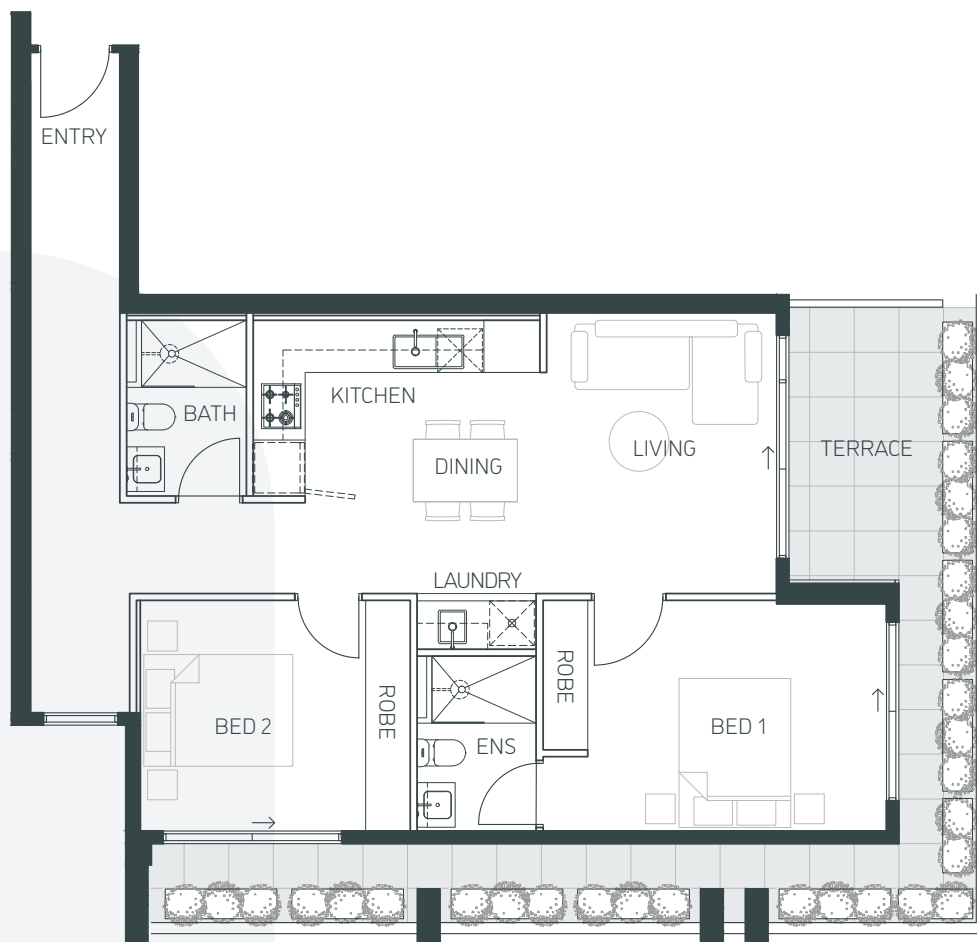
### LOCATION PLAN



The information on this floor plan is believed to be correct but is not guaranteed. Dimensions and specifications are subject to change without notice, and may vary from the final build dimension. Area measurements have been taken from the centre line of party walls and the exterior of outside wall and include ducts.



## APARTMENT 1.07

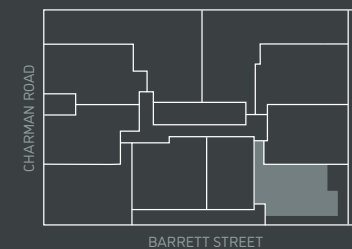


banksia

BED 2 | BATH 2 | CAR 1

INTERNAL SPACE:	82.5m <sup>2</sup>
EXTERNAL SPACE:	24.5m <sup>2</sup>
TOTAL:	107.0m <sup>2</sup>

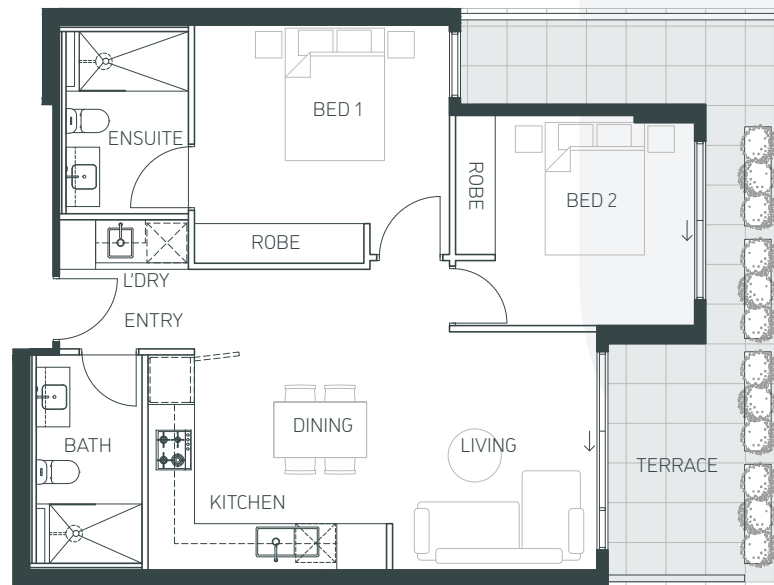
LOCATION PLAN



The information on this floor plan is believed to be correct but is not guaranteed. Dimensions and specifications are subject to change without notice, and may vary from the final build dimension. Area measurements have been taken from the centre line of party walls and the exterior of outside wall and include ducts.



## APARTMENT 1.08

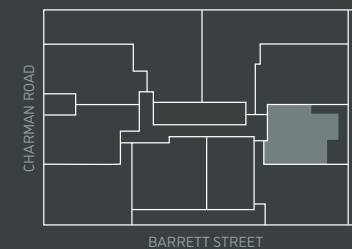


banksia

BED 2 | BATH 2 | CAR 1

INTERNAL SPACE:	75.0m <sup>2</sup>
EXTERNAL SPACE:	18.5m <sup>2</sup>
TOTAL:	93.5m <sup>2</sup>

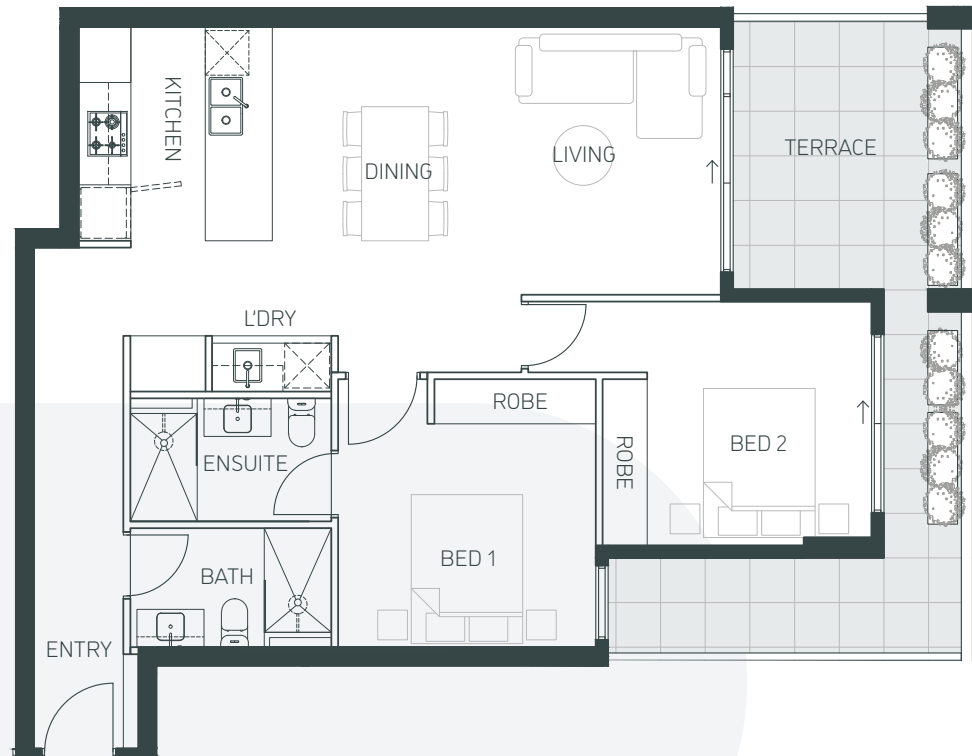
### LOCATION PLAN



The information on this floor plan is believed to be correct but is not guaranteed. Dimensions and specifications are subject to change without notice, and may vary from the final build dimension. Area measurements have been taken from the centre line of party walls and the exterior of outside wall and include ducts.



## APARTMENT 1.09

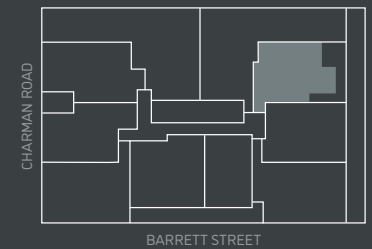


banksia

BED 2 | BATH 2 | CAR 1

INTERNAL SPACE:	87.0m <sup>2</sup>
EXTERNAL SPACE:	21.0m <sup>2</sup>
TOTAL:	108.0m <sup>2</sup>

LOCATION PLAN



The information on this floor plan is believed to be correct but is not guaranteed. Dimensions and specifications are subject to change without notice, and may vary from the final build dimension. Area measurements have been taken from the centre line of party walls and the exterior of outside wall and include ducts.



## APARTMENT 1.10

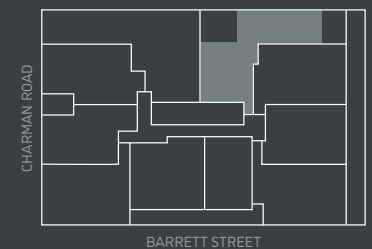


banksia

BED 3 | BATH 2 | CAR 2

INTERNAL SPACE:	125.5m <sup>2</sup>
EXTERNAL SPACE:	13.5m <sup>2</sup>
TOTAL:	139.0m <sup>2</sup>

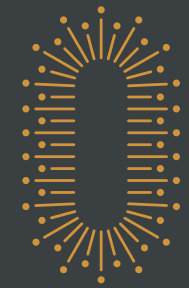
### LOCATION PLAN



The information on this floor plan is believed to be correct but is not guaranteed. Dimensions and specifications are subject to change without notice, and may vary from the final build dimension. Area measurements have been taken from the centre line of party walls and the exterior of outside wall and include ducts.



## APARTMENT 2.01

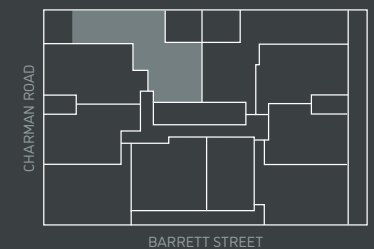


banksia

### BED 3 | BATH 2 | CAR 2

INTERNAL SPACE:	133.5m <sup>2</sup>
EXTERNAL SPACE:	16.5m <sup>2</sup>
TOTAL:	150.0m <sup>2</sup>

### LOCATION PLAN



The information on this floor plan is believed to be correct but is not guaranteed. Dimensions and specifications are subject to change without notice, and may vary from the final build dimension. Area measurements have been taken from the centre line of party walls and the exterior of outside wall and include ducts.

0 1 2 3 4m

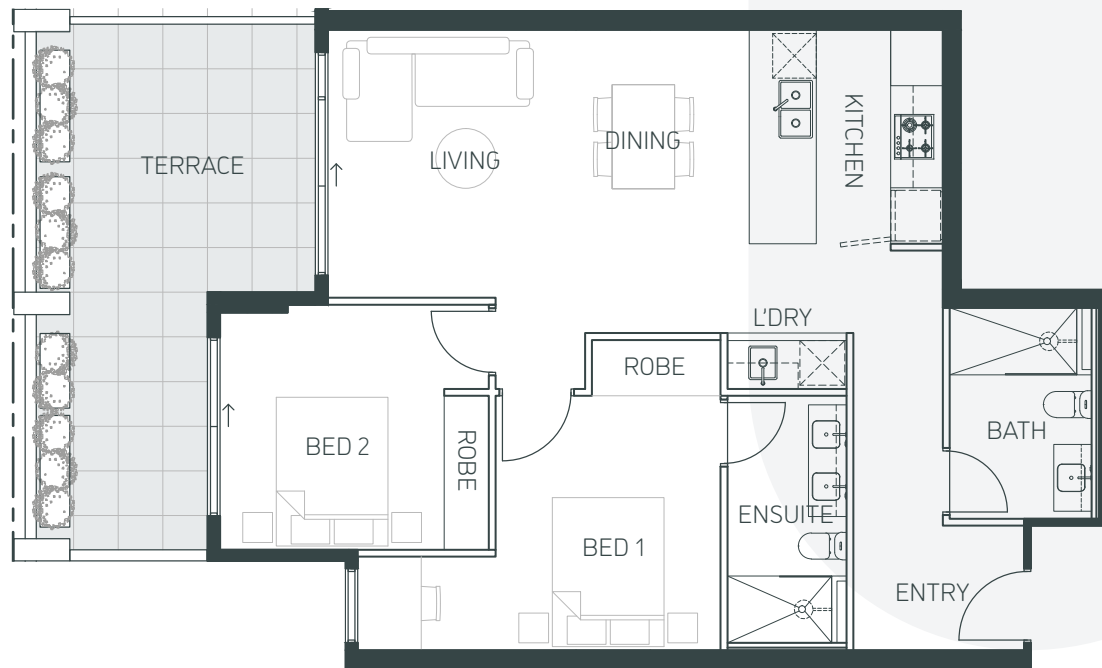




## APARTMENT 2.02



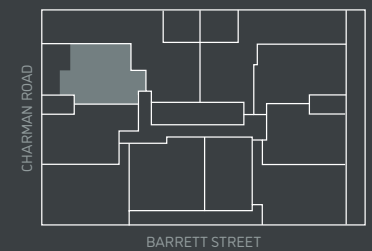
banksia



BED 2 | BATH 2 | CAR 1

INTERNAL SPACE:	86.0m <sup>2</sup>
EXTERNAL SPACE:	21.5m <sup>2</sup>
TOTAL:	107.5m <sup>2</sup>

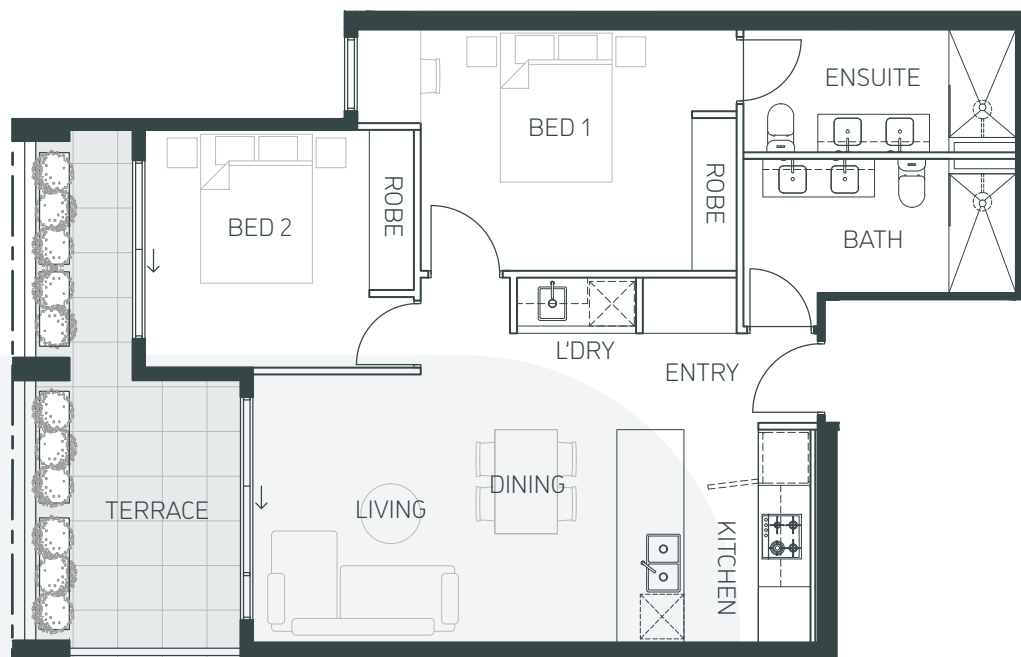
LOCATION PLAN



The information on this floor plan is believed to be correct but is not guaranteed. Dimensions and specifications are subject to change without notice, and may vary from the final build dimension. Area measurements have been taken from the centre line of party walls and the exterior of outside wall and include ducts.



## APARTMENT 2.03

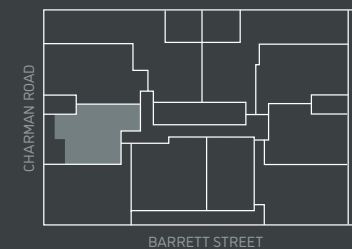


banksia

BED 2 | BATH 2 | CAR 1

INTERNAL SPACE:	80.0m <sup>2</sup>
EXTERNAL SPACE:	14.0m <sup>2</sup>
TOTAL:	94.0m <sup>2</sup>

LOCATION PLAN

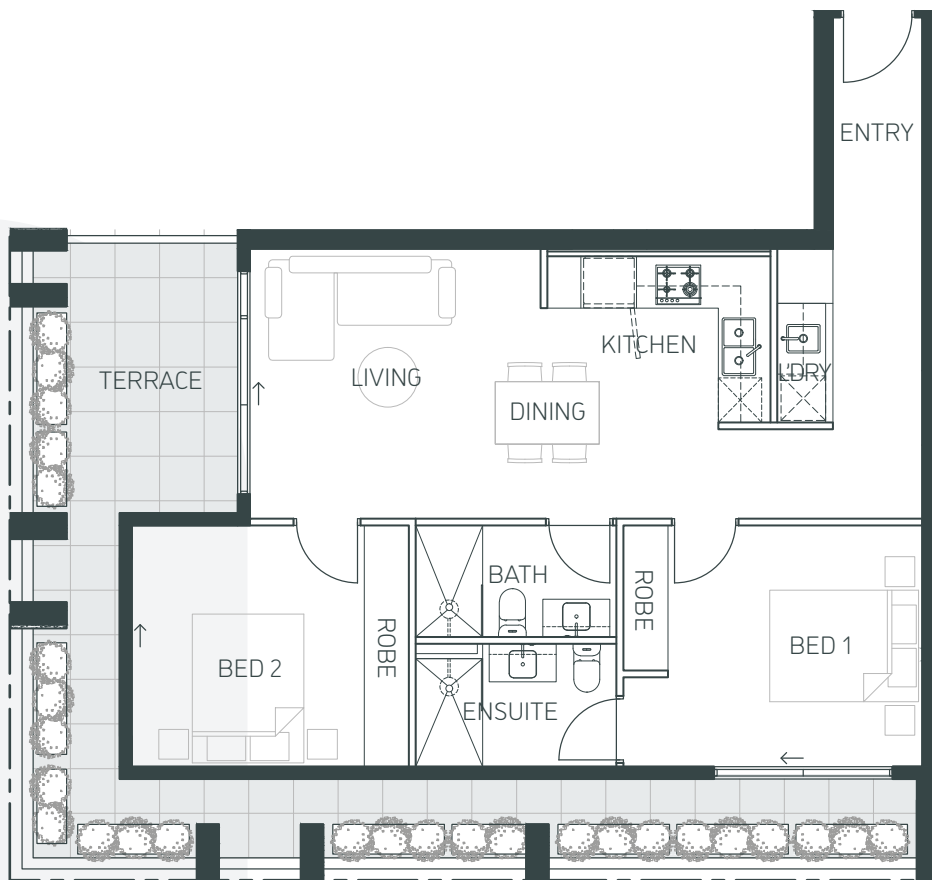


The information on this floor plan is believed to be correct but is not guaranteed. Dimensions and specifications are subject to change without notice, and may vary from the final build dimension. Area measurements have been taken from the centre line of party walls and the exterior of outside wall and include ducts.





## APARTMENT 2.04

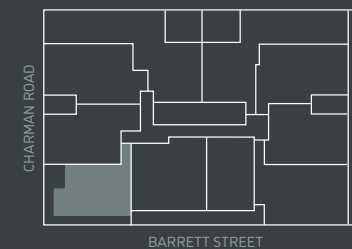


banksia

BED 2 | BATH 2 | CAR 1

INTERNAL SPACE:	77.5m <sup>2</sup>
EXTERNAL SPACE:	26.5m <sup>2</sup>
TOTAL:	104.0m <sup>2</sup>

### LOCATION PLAN



The information on this floor plan is believed to be correct but is not guaranteed. Dimensions and specifications are subject to change without notice, and may vary from the final build dimension. Area measurements have been taken from the centre line of party walls and the exterior of outside wall and include ducts.



## APARTMENT 2.05

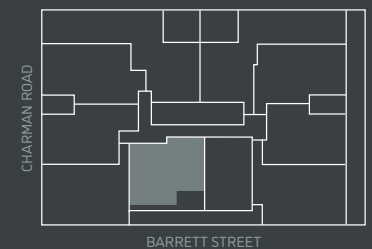


banksia

BED 2 | BATH 2 | CAR 1

INTERNAL SPACE:	90.0m <sup>2</sup>
EXTERNAL SPACE:	13.5m <sup>2</sup>
TOTAL:	103.5m <sup>2</sup>

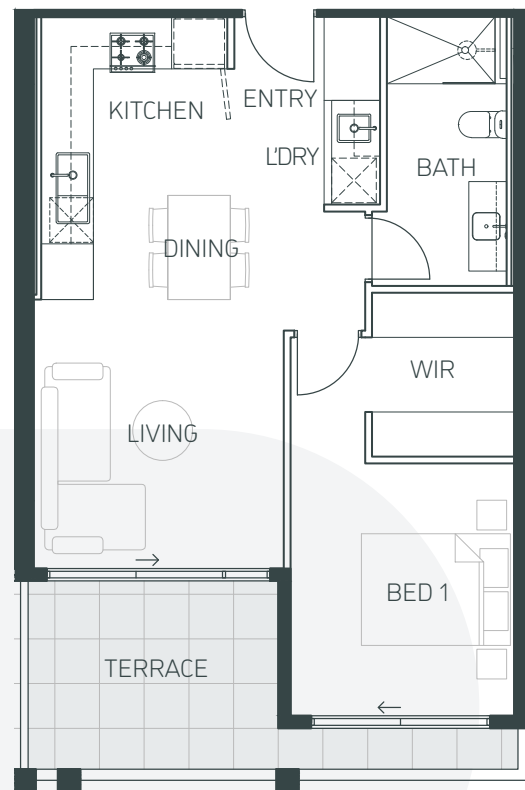
LOCATION PLAN



The information on this floor plan is believed to be correct but is not guaranteed. Dimensions and specifications are subject to change without notice, and may vary from the final build dimension. Area measurements have been taken from the centre line of party walls and the exterior of outside wall and include ducts.



## APARTMENT 2.06

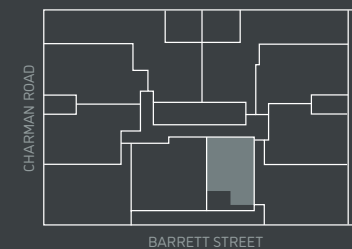


banksia

BED 1 | BATH 1 | CAR 1

INTERNAL SPACE:	58.0m <sup>2</sup>
EXTERNAL SPACE:	10.0m <sup>2</sup>
TOTAL:	68.0m <sup>2</sup>

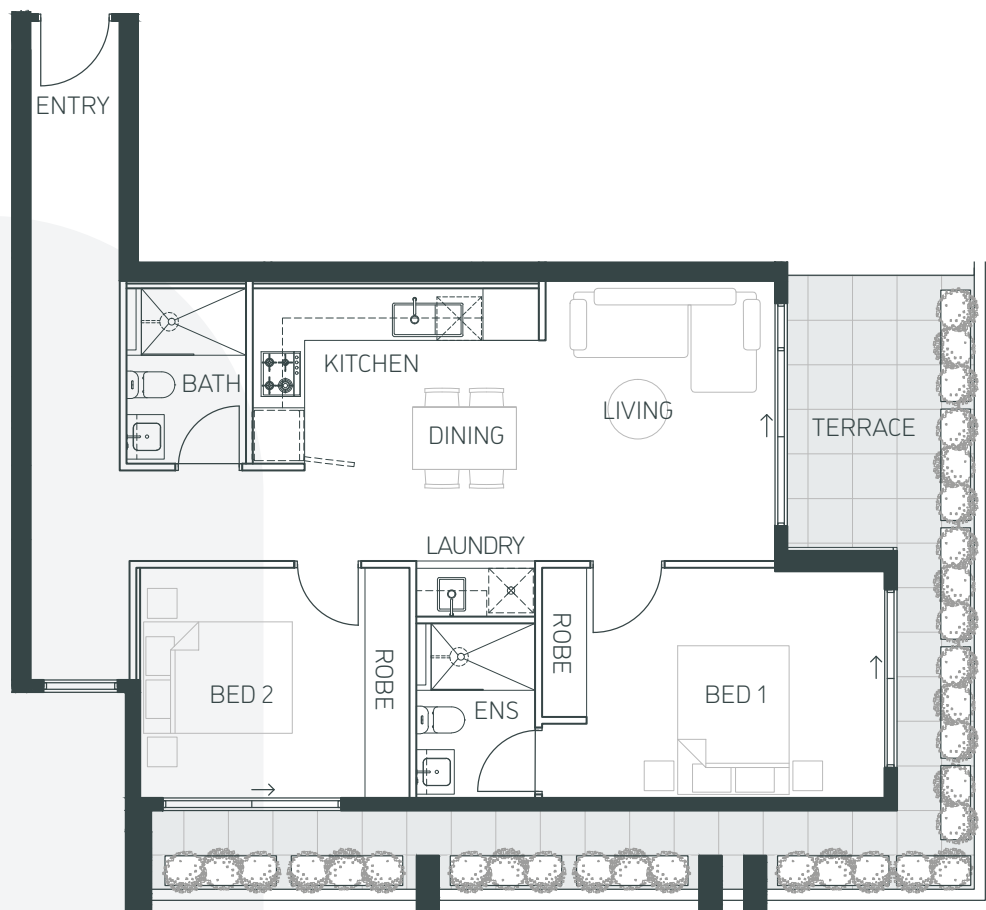
LOCATION PLAN



The information on this floor plan is believed to be correct but is not guaranteed. Dimensions and specifications are subject to change without notice, and may vary from the final build dimension. Area measurements have been taken from the centre line of party walls and the exterior of outside wall and include ducts.



## APARTMENT 2.07

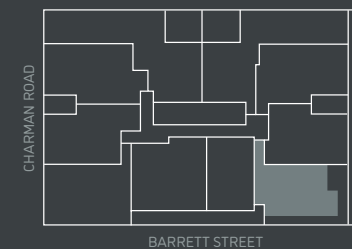


banksia

BED 2 | BATH 2 | CAR 1

INTERNAL SPACE:	82.5m <sup>2</sup>
EXTERNAL SPACE:	24.5m <sup>2</sup>
TOTAL:	107.0m <sup>2</sup>

LOCATION PLAN



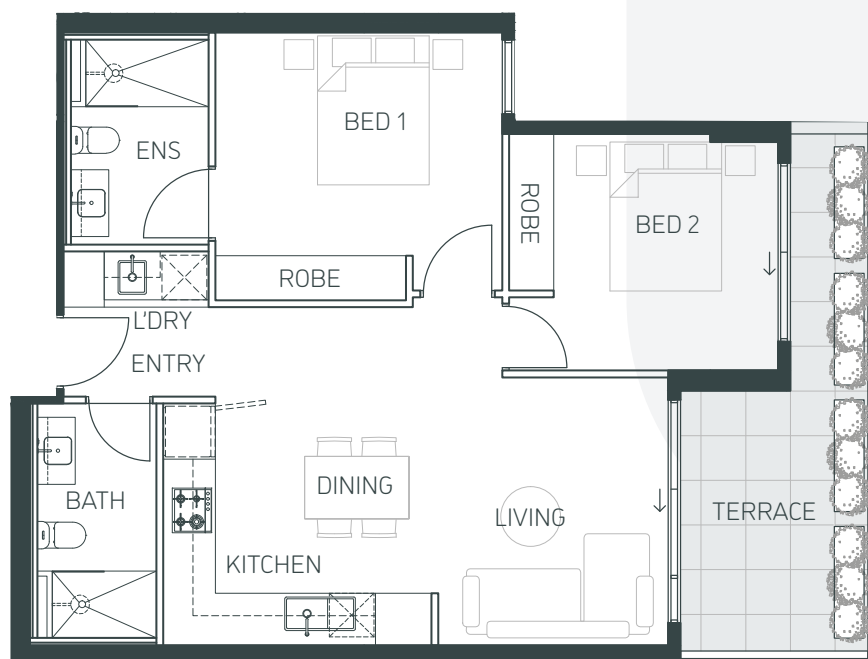
The information on this floor plan is believed to be correct but is not guaranteed. Dimensions and specifications are subject to change without notice, and may vary from the final build dimension. Area measurements have been taken from the centre line of party walls and the exterior of outside wall and include ducts.



## APARTMENT 2.08



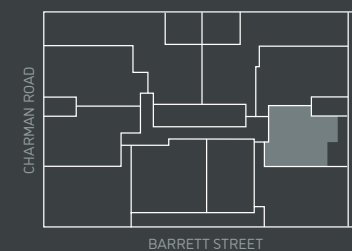
banksia



BED 2 | BATH 2 | CAR 1

INTERNAL SPACE:	75.0m <sup>2</sup>
EXTERNAL SPACE:	12.5m <sup>2</sup>
TOTAL:	87.5m <sup>2</sup>

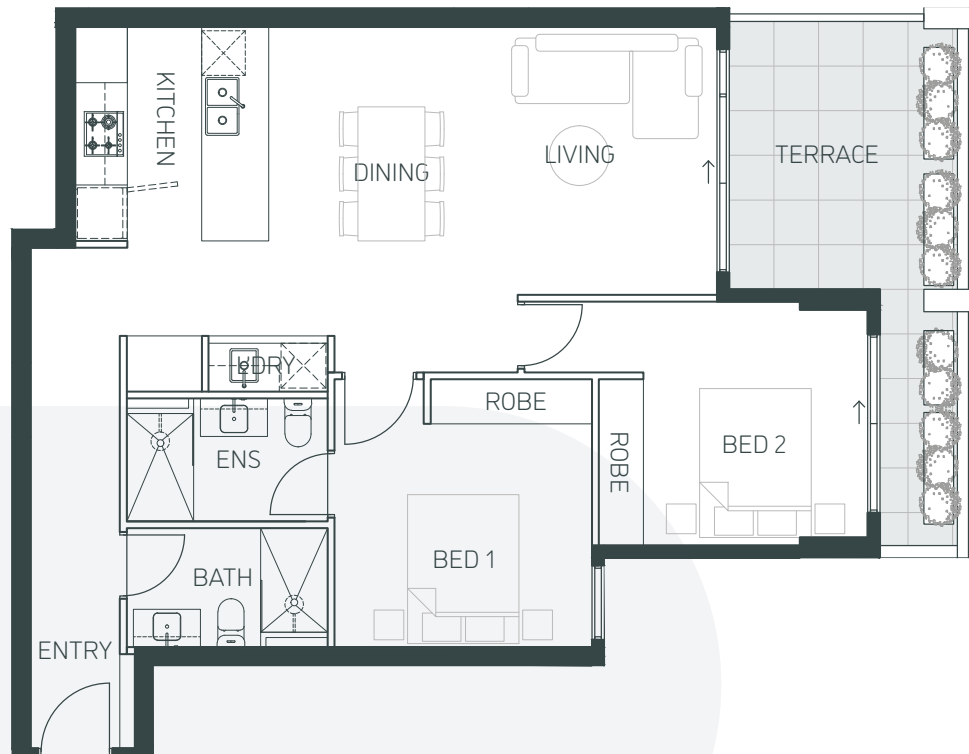
LOCATION PLAN



The information on this floor plan is believed to be correct but is not guaranteed. Dimensions and specifications are subject to change without notice, and may vary from the final build dimension. Area measurements have been taken from the centre line of party walls and the exterior of outside wall and include ducts.



## APARTMENT 2.09

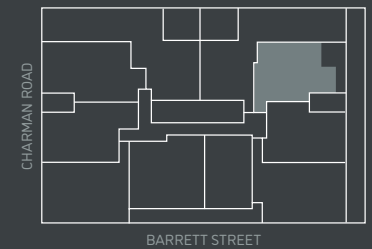


banksia

BED 2 | BATH 2 | CAR 1

INTERNAL SPACE:	87.0m <sup>2</sup>
EXTERNAL SPACE:	14.5m <sup>2</sup>
TOTAL:	101.5m <sup>2</sup>

### LOCATION PLAN



The information on this floor plan is believed to be correct but is not guaranteed. Dimensions and specifications are subject to change without notice, and may vary from the final build dimension. Area measurements have been taken from the centre line of party walls and the exterior of outside wall and include ducts.



## APARTMENT 2.10

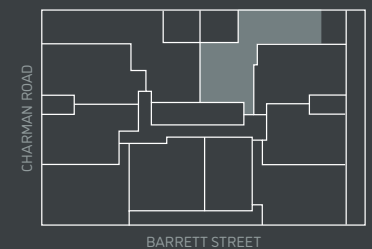


banksia

BED 3 | BATH 2 | CAR 2

INTERNAL SPACE:	125.5m <sup>2</sup>
EXTERNAL SPACE:	13.5m <sup>2</sup>
TOTAL:	139.0m <sup>2</sup>

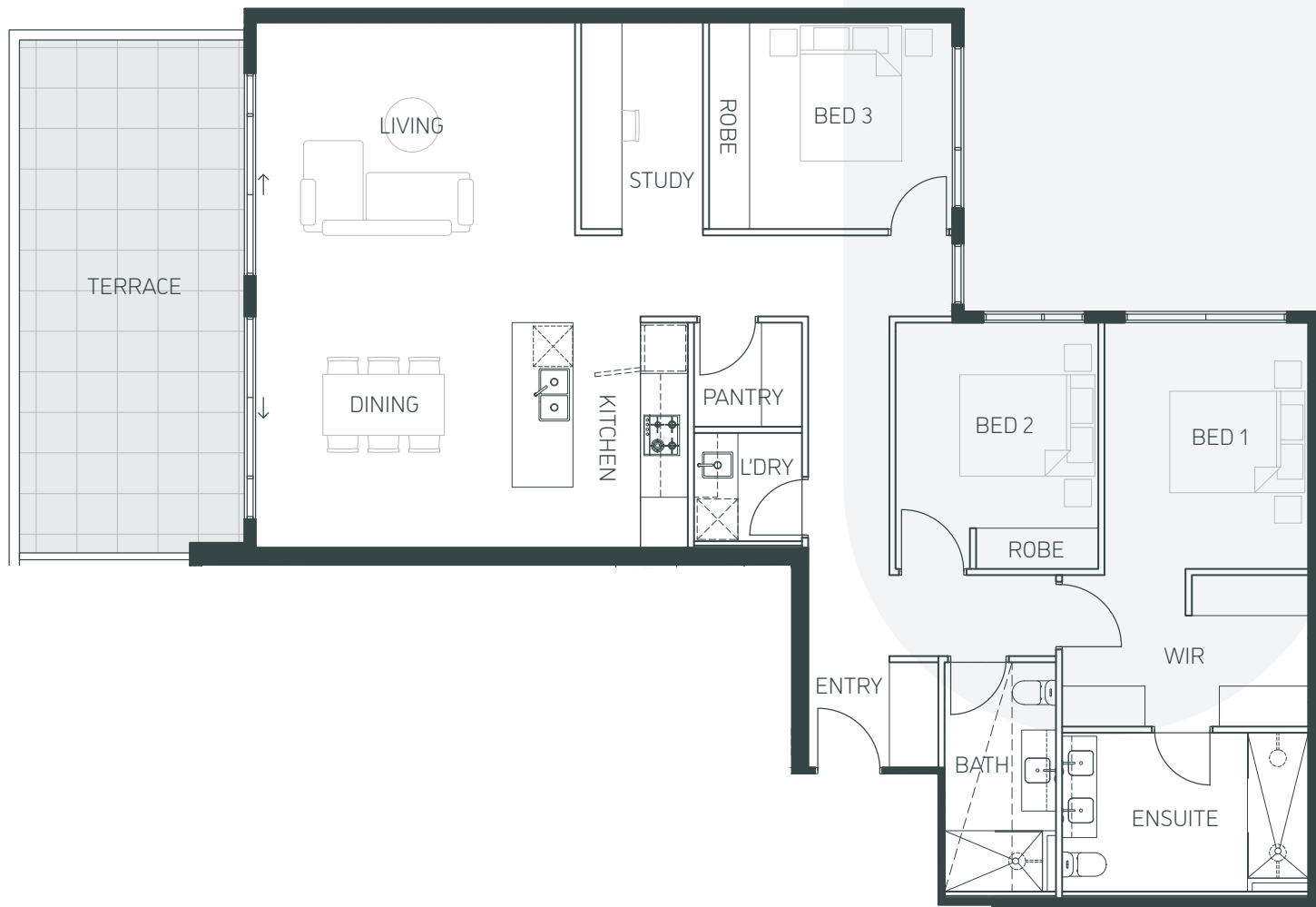
LOCATION PLAN



The information on this floor plan is believed to be correct but is not guaranteed. Dimensions and specifications are subject to change without notice, and may vary from the final build dimension. Area measurements have been taken from the centre line of party walls and the exterior of outside wall and include ducts.



## APARTMENT 3.01

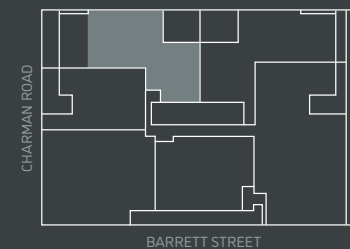


banksia

BED 3 | BATH 2 | CAR 2

INTERNAL SPACE:	140.0m <sup>2</sup>
EXTERNAL SPACE:	25.0m <sup>2</sup>
<b>TOTAL:</b>	<b>165.0m<sup>2</sup></b>

### LOCATION PLAN

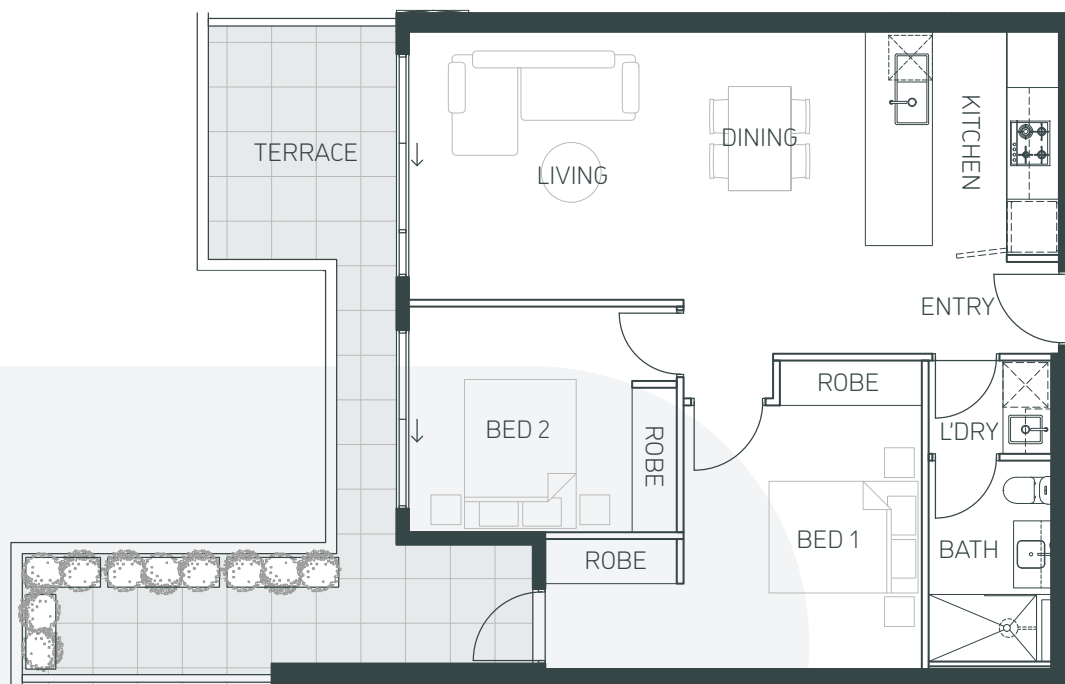


The information on this floor plan is believed to be correct but is not guaranteed. Dimensions and specifications are subject to change without notice, and may vary from the final build dimension. Area measurements have been taken from the centre line of party walls and the exterior of outside wall and include ducts.





## APARTMENT 3.02

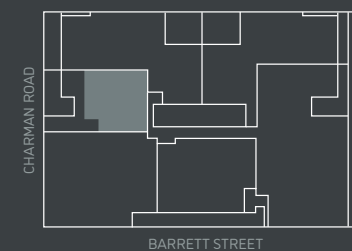


banksia

BED 2 | BATH 1 | CAR 1

INTERNAL SPACE:	76.0m <sup>2</sup>
EXTERNAL SPACE:	22.0m <sup>2</sup>
TOTAL:	98.0m <sup>2</sup>

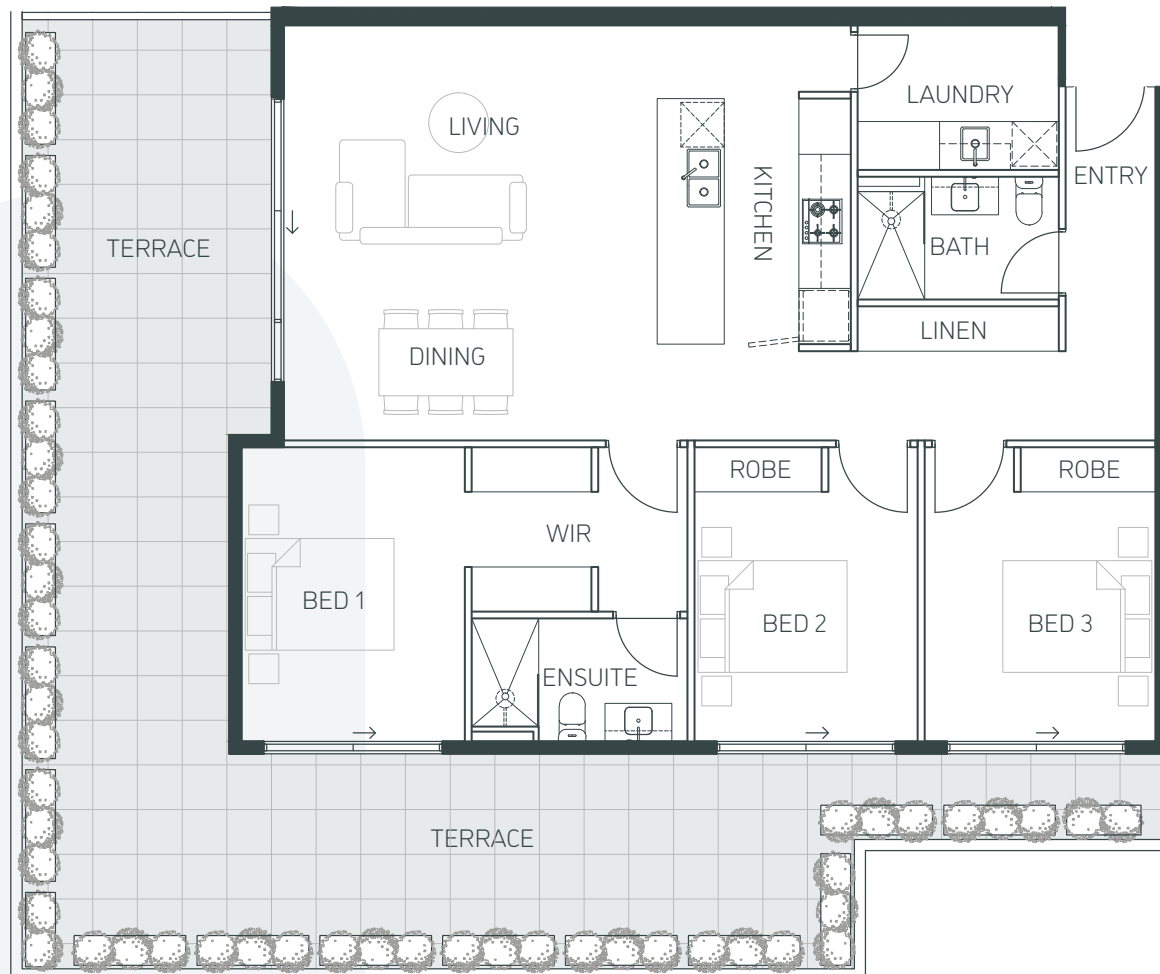
LOCATION PLAN



The information on this floor plan is believed to be correct but is not guaranteed. Dimensions and specifications are subject to change without notice, and may vary from the final build dimension. Area measurements have been taken from the centre line of party walls and the exterior of outside wall and include ducts.



## APARTMENT 3.03

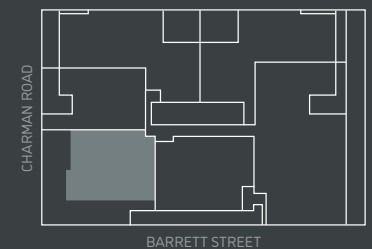


banksia

BED 3 | BATH 2 | CAR 2

INTERNAL SPACE:	120.0m <sup>2</sup>
EXTERNAL SPACE:	67.5m <sup>2</sup>
TOTAL:	187.5m <sup>2</sup>

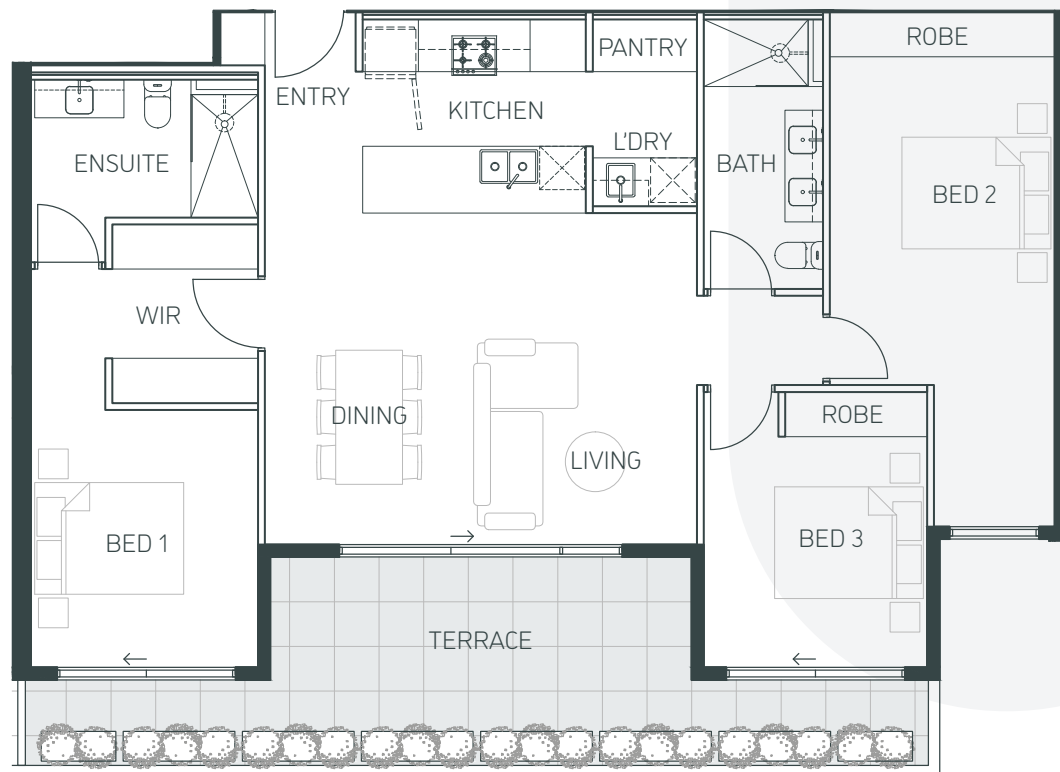
### LOCATION PLAN



The information on this floor plan is believed to be correct but is not guaranteed. Dimensions and specifications are subject to change without notice, and may vary from the final build dimension. Area measurements have been taken from the centre line of party walls and the exterior of outside wall and include ducts.



## APARTMENT 3.04

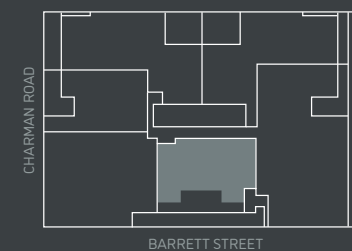


banksia

BED 3 | BATH 2 | CAR 2

INTERNAL SPACE:	112.0m <sup>2</sup>
EXTERNAL SPACE:	23.0m <sup>2</sup>
TOTAL:	135.0m <sup>2</sup>

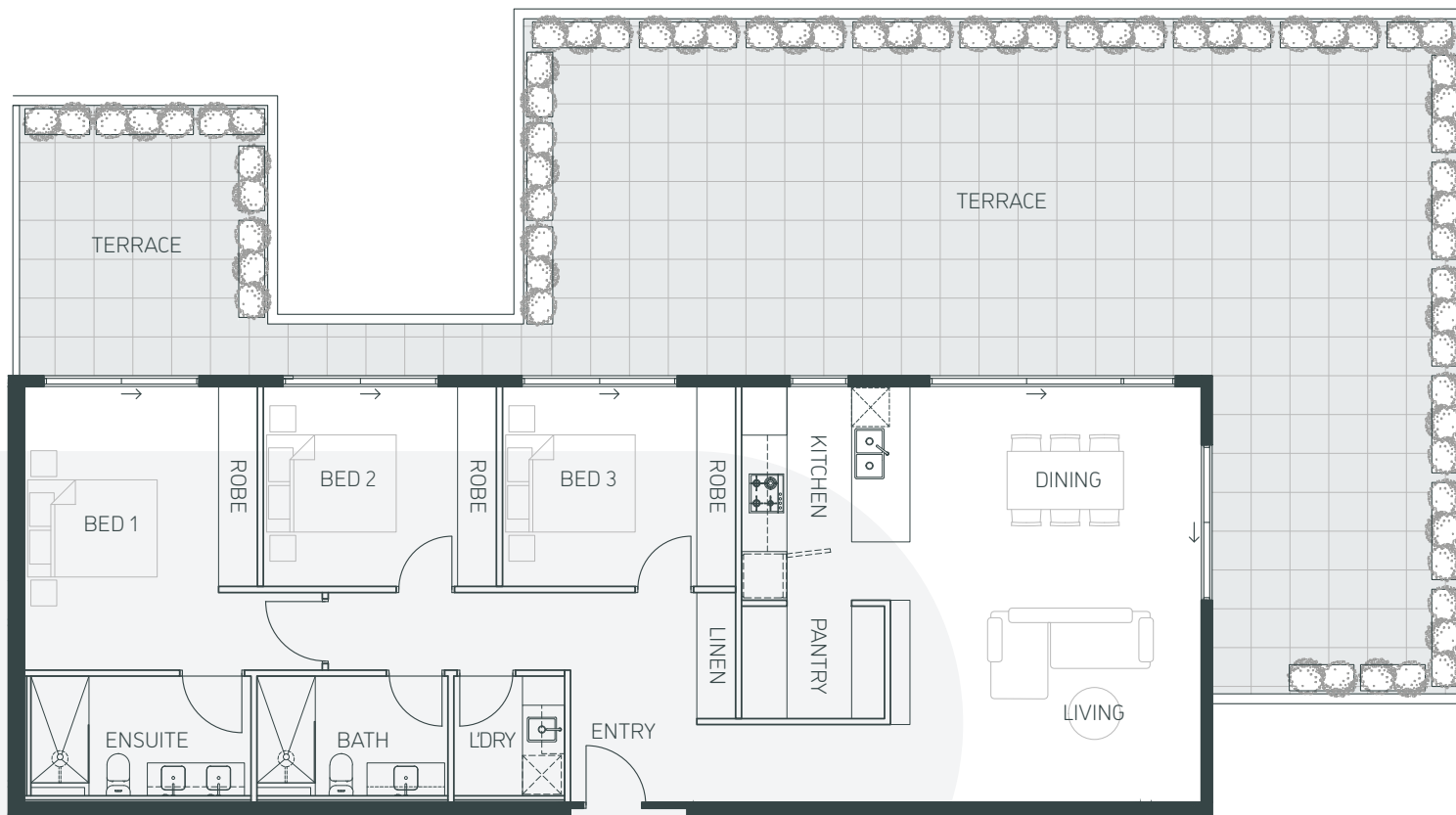
### LOCATION PLAN



The information on this floor plan is believed to be correct but is not guaranteed. Dimensions and specifications are subject to change without notice, and may vary from the final build dimension. Area measurements have been taken from the centre line of party walls and the exterior of outside wall and include ducts.



## APARTMENT 3.05



(Note: Rotated plan view. Refer location plan for correct orientation.)

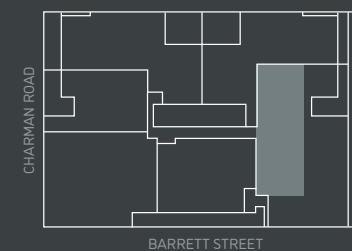


banksia

BED 3 | BATH 2 | CAR 2

INTERNAL SPACE:	123.5m <sup>2</sup>
EXTERNAL SPACE:	118.0m <sup>2</sup>
TOTAL:	241.5m <sup>2</sup>

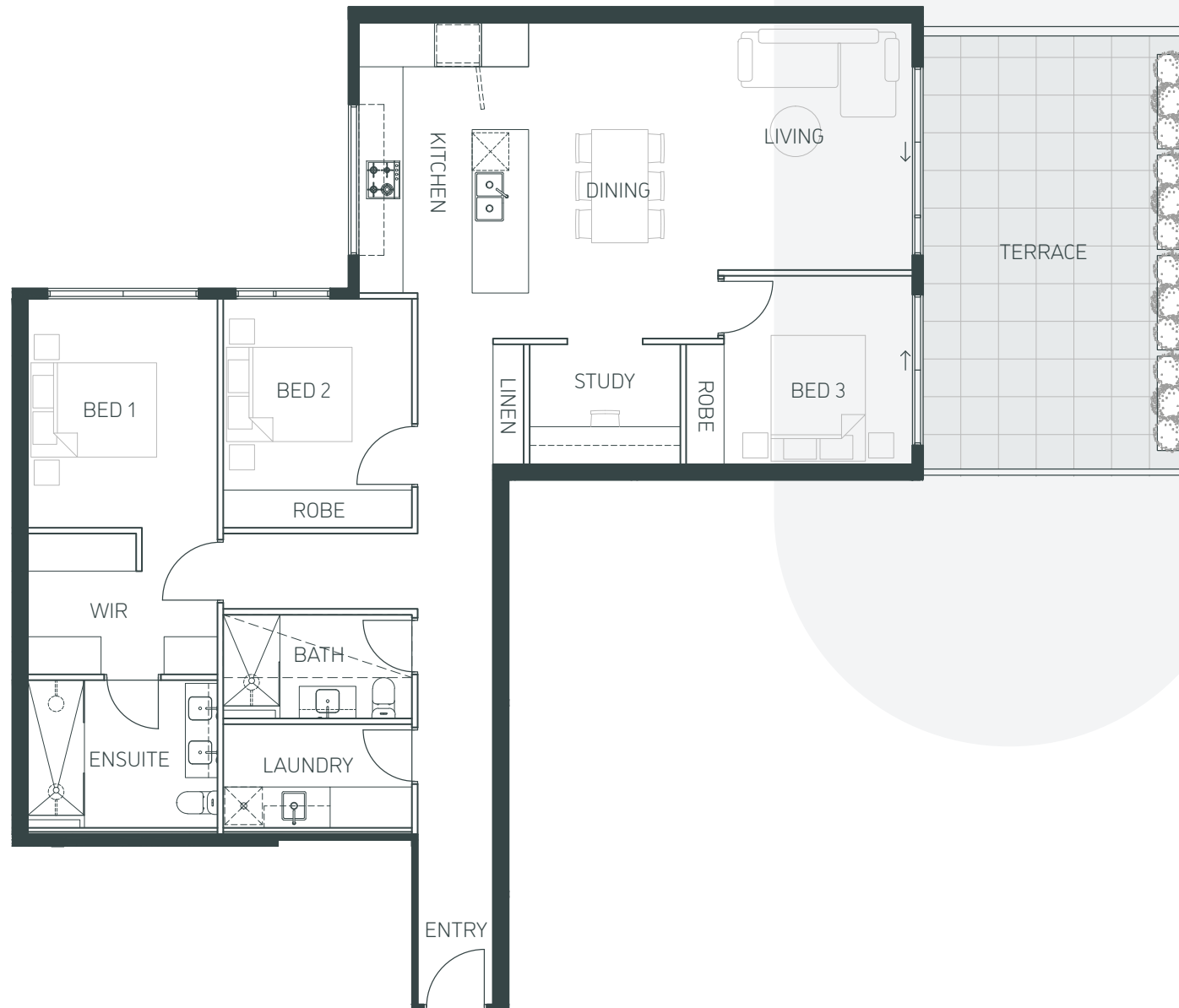
LOCATION PLAN



The information on this floor plan is believed to be correct but is not guaranteed. Dimensions and specifications are subject to change without notice, and may vary from the final build dimension. Area measurements have been taken from the centre line of party walls and the exterior of outside wall and include ducts.



## APARTMENT 3.06

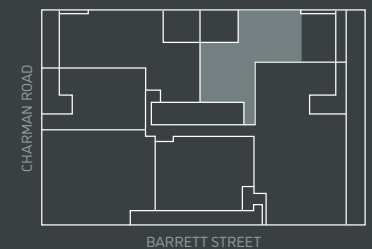


banksia

BED 3 | BATH 2 | CAR 2

INTERNAL SPACE:	130.5m <sup>2</sup>
EXTERNAL SPACE:	29.0m <sup>2</sup>
TOTAL:	159.5m <sup>2</sup>

### LOCATION PLAN



The information on this floor plan is believed to be correct but is not guaranteed. Dimensions and specifications are subject to change without notice, and may vary from the final build dimension. Area measurements have been taken from the centre line of party walls and the exterior of outside wall and include ducts.