

HOUSE & LAND



LOT 682 NEW ROAD, DAWN ESTATE, WALLOON QLD 4306

Land Size	448 m ²
Land Price	\$260,000
Registration	Aug-23
House Area	202.76 m ²
House Price	\$379,715

TOTAL TURNKEY PRICE:

\$639,715

Date:	26/06/23
Price Expiry:	26/08/23
Inclusion Level:	GOLD
PR Number:	PR5312

City Façade Inclusions:

- Combination of face brick & render to front façade
- Colorbond roof & garage door
- 820mm paint grade entry door
- 2x sliding windows & 2x wall mounted up downlights

Gold Inclusion Highlights:

- Turnkey inclusions with landscaping, fencing & driveway
- 820mm paint grade entry door
- 2440mm ceiling height
- 20mm engineered stone benchtops to kitchen & bathrooms
- Soft close hinges to kitchen cupboards & vanities
- 600mm kitchen appliances, dishwasher & water point to fridge
- Quality basins, tapware & shower niche
- Split system A/C to main living area & main bedroom
- Quality tiles, carpet, LED downlights & ceiling fans
- Roller blinds & security screens
- Plus much more, please refer to the Gold Inclusions brochure

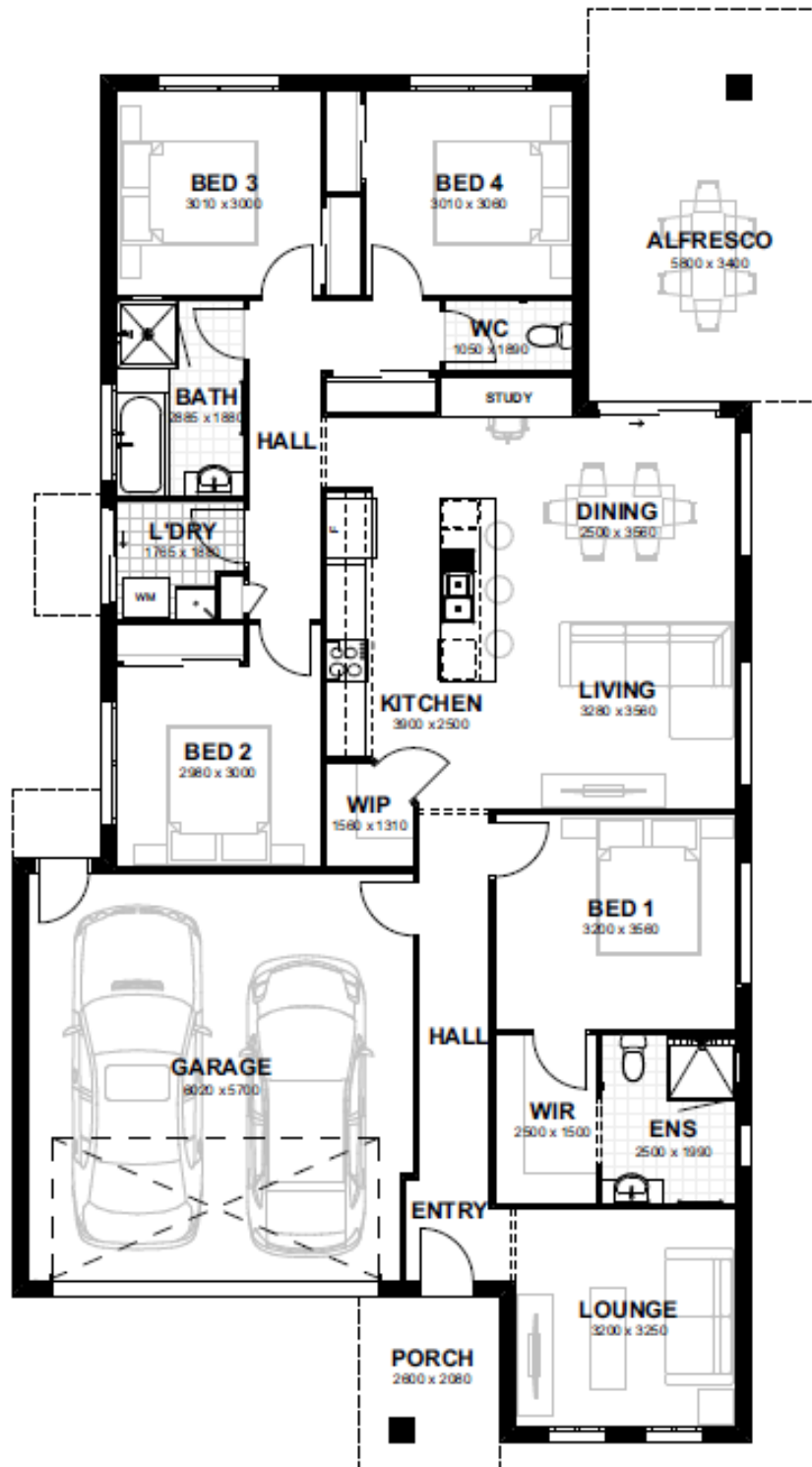
Inclusion Upgrade:

- Painted fence returns
- additional landscaping including 1x 45L tree

Additional Notes:

CAYMAN 203

Living Area	140.62 m ²
Garage	37.01 m ²
Porch	5.41 m ²
Alfresco	19.72 m ²
Total House Area	202.76 m²



Terms, conditions, fees and charges may apply. The illustrations provided are artist impressions only and may include alternative finishes and features to those supplied, such as landscaping and fencing. All images and floor plans remain in the property and are protected by Copyright. Land and prices are subject to availability and can change without notice. Reserves the right to amend specifications and prices without notice.